

JAMES EDWARD

Comprehensively Cared For



Gillespie Road, , N5 1LN

£825,000



Gillespie Road, , , N5 1LN

£825,000

A wonderful two double bedroom, two bathroom ground floor flat with gardens and basement located conveniently close to excellent transport links and local amenities.

Description

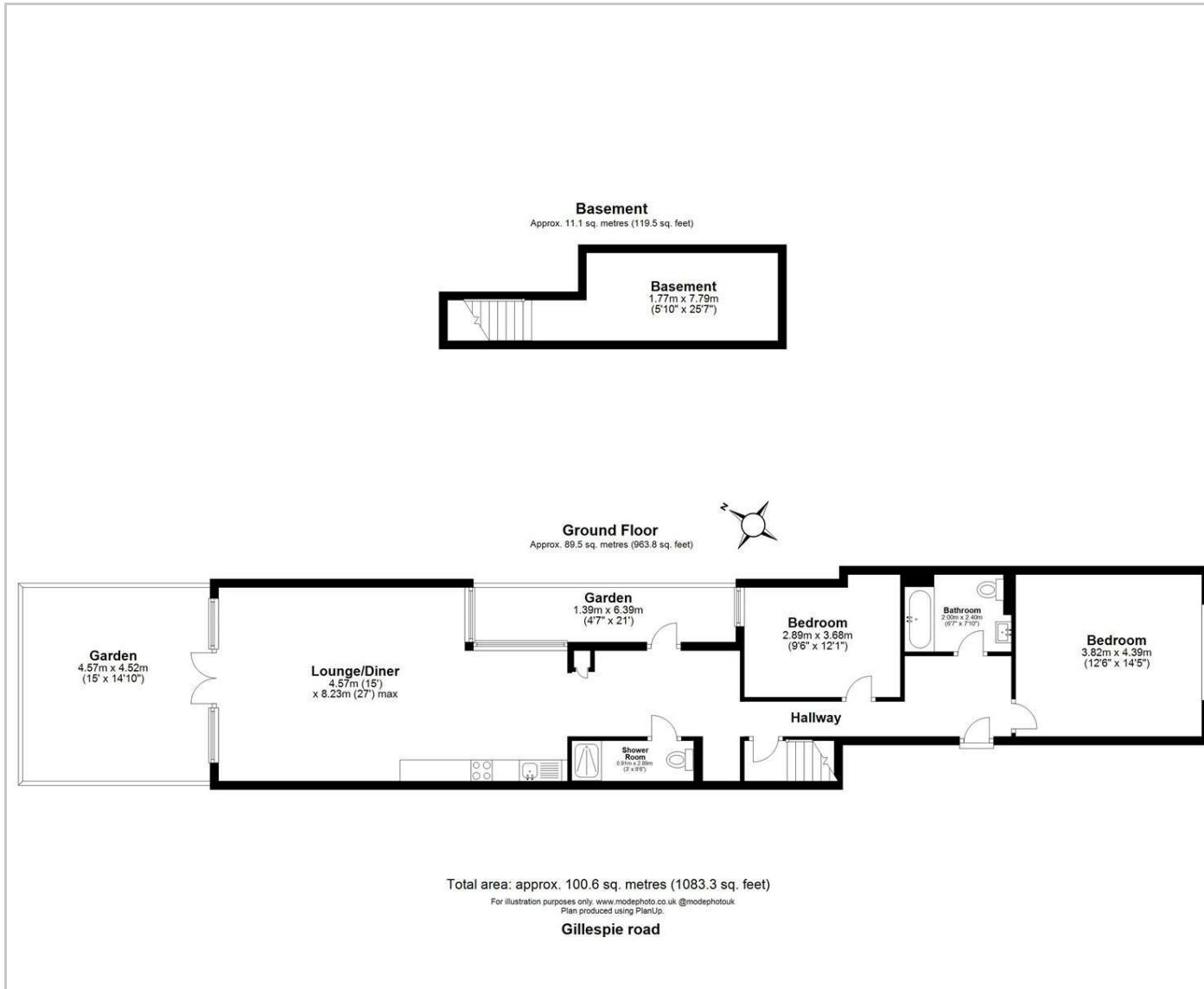


Situation

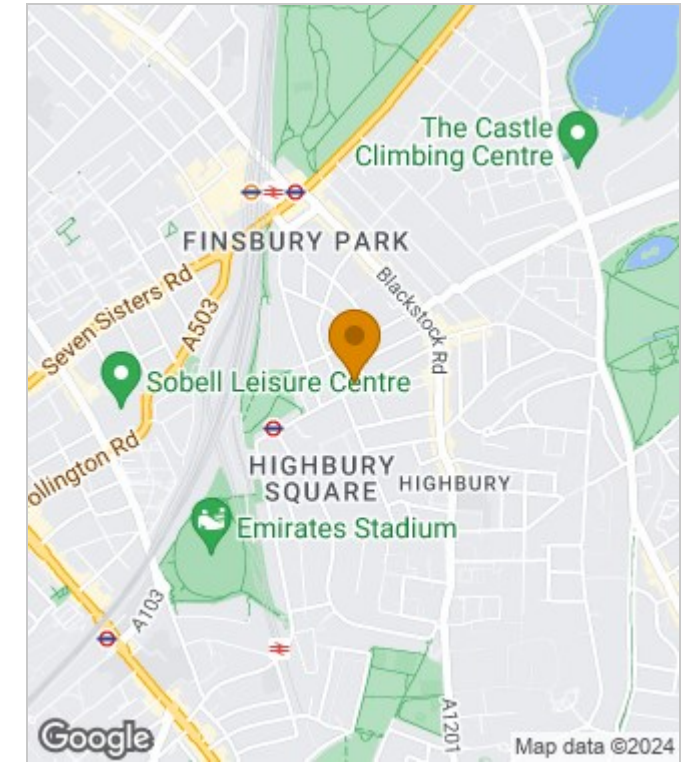


null
Council Tax Band:
Available:

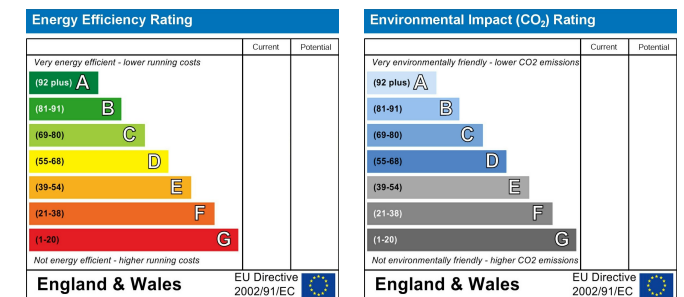
Floor Plans



Area Map



Energy Performance Graph



These particulars, whilst believed to be accurate are set out as a general outline only for guidance and do not constitute any part of an offer or contract. Intending purchasers should not rely on them as statements of representation of fact, but must satisfy themselves by inspection or otherwise as to their accuracy. No person in this firm's employment has the authority to make or give any representation or warranty in respect of the property.

100 Highbury Park, London, N5 2XE

Tel: 020 7952 5197 Email: info@jamesedwardproperties.co.uk <https://www.jamesedwardproperties.co.uk>