

JAMES EDWARD

Comprehensively Cared For



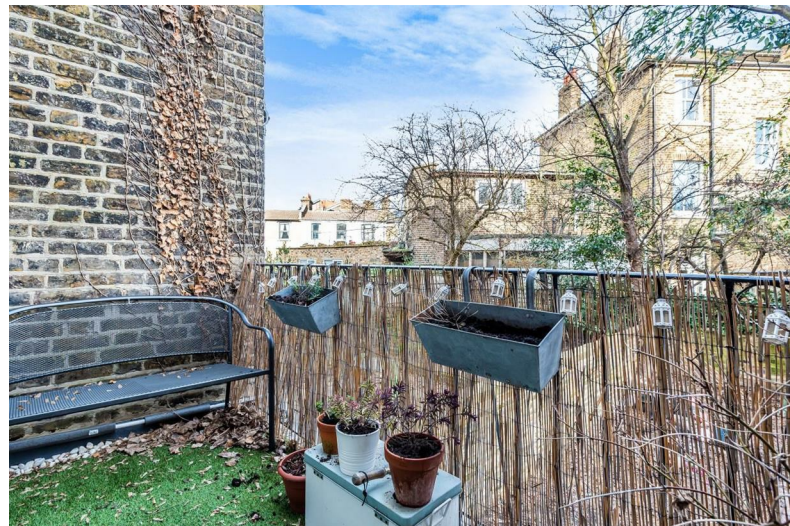
St. Thomas's Road

, London, N4 2QW

Offers In Excess Of £375,000



St. Thomas's Road



Description

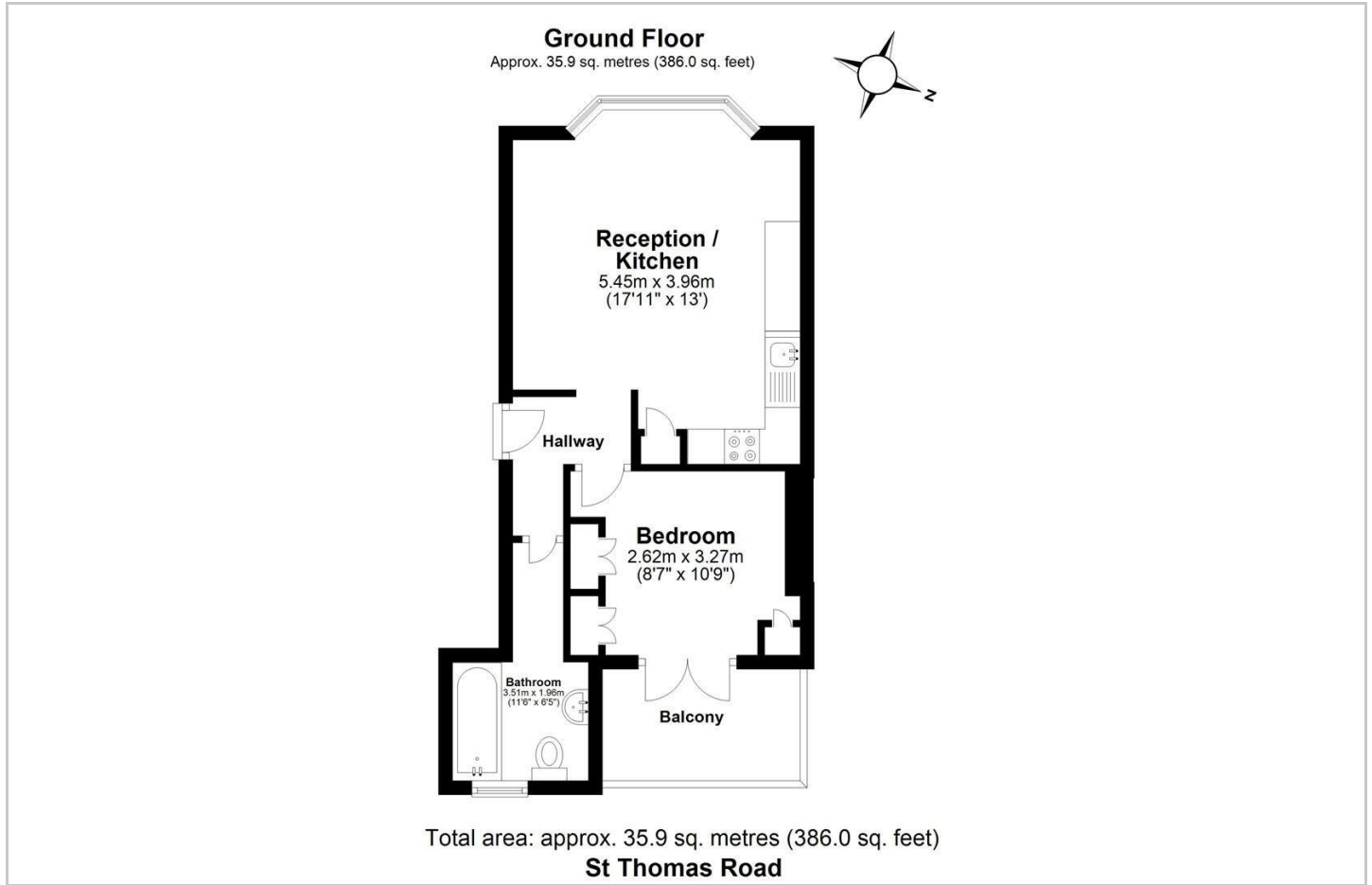
A delightful one bedroom period conversion with private balcony brilliantly located just minutes' walk to Finsbury Park station, parks, shops, cafes and restaurants.

- Ample Storage Cupboards
- Chain Free
- Close to Parks
- Excellent Location
- Just Minutes' Walk to Finsbury Park Station
- Period Conversion
- Private Balcony
- Share Of Freehold

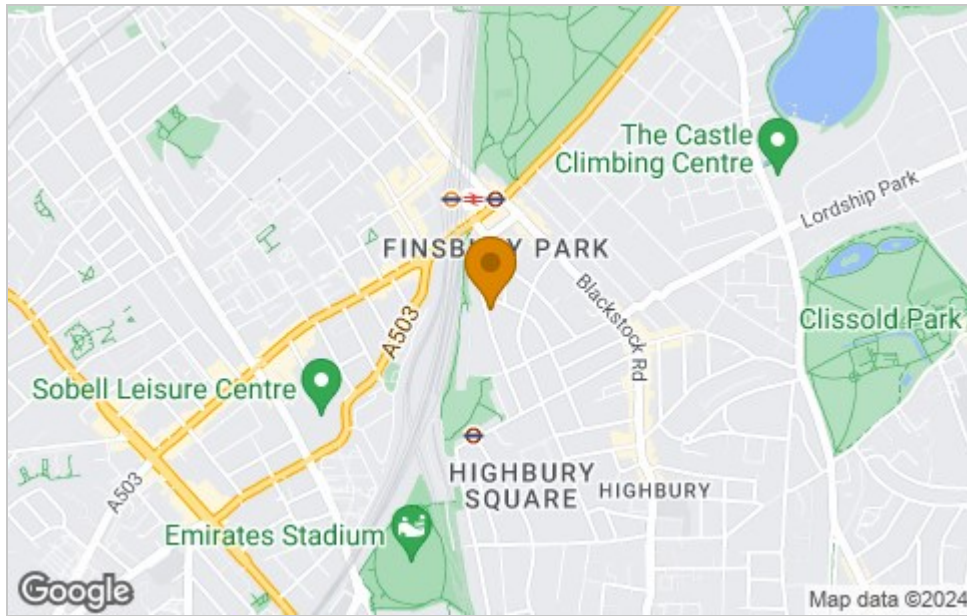




Floor Plan



Area Map



Viewing

Please contact our James Edward Office on 020 7952 5197 if you wish to arrange a viewing appointment for this property or require further information.

These particulars, whilst believed to be accurate are set out as a general outline only for guidance and do not constitute any part of an offer or contract. Intending purchasers should not rely on them as statements of representation of fact, but must satisfy themselves by inspection or otherwise as to their accuracy. No person in this firm's employment has the authority to make or give any representation or warranty in respect of the property.

100 Highbury Park, London, N5 2XE
Tel: 020 7952 5197 Email: info@jamesedwardproperties.co.uk <https://www.jamesedwardproperties.co.uk>

Energy Efficiency Graph

