

JAMES EDWARD

Comprehensively Cared For



Thorold Road

London, London, N22 8YE

Price £450,000



Thorold Road



Description

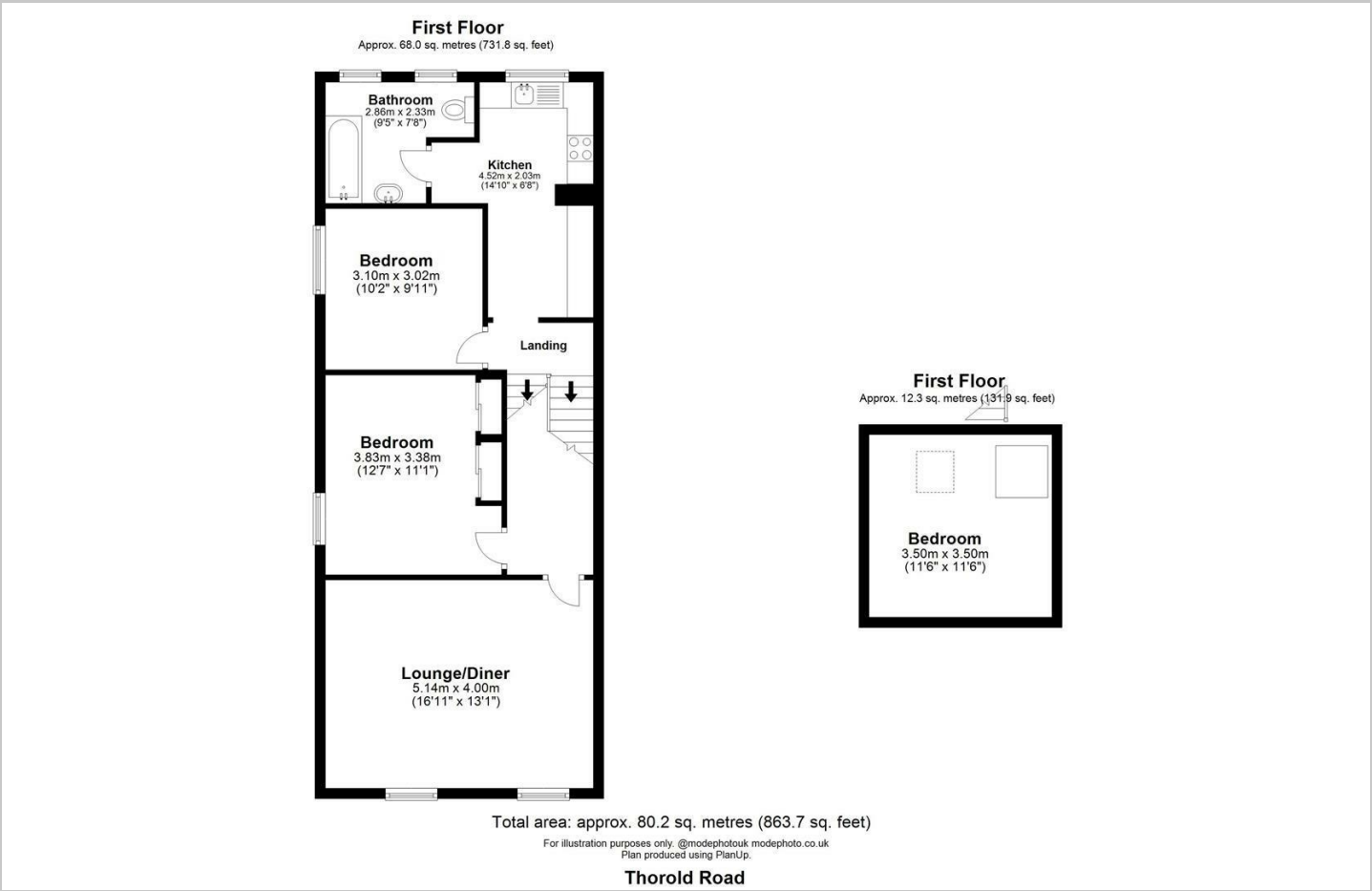
A very well presented two double bedroom first floor period conversion at 863 sq ft, located in Bowes Park with its excellent transport links, parks and shops.

- Bowes Park Station on Doorstep
- Close to Parks
- Excellent Location
- Period Conversion
- Chain Free
- Myddleton Rd Parallel
- Converted Loft
- Peaceful Street
- Two Double Bedrooms
- Share of Freehold

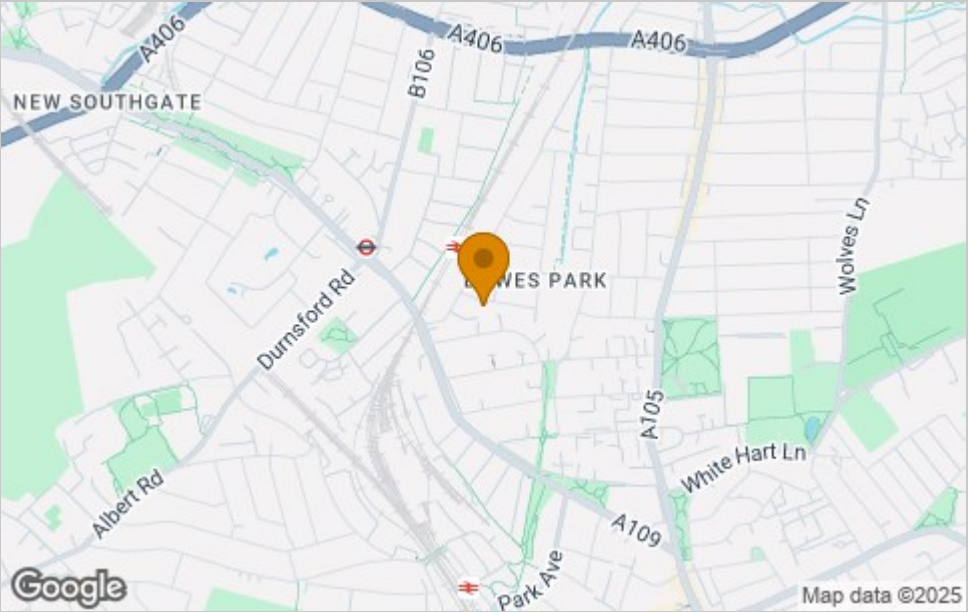




Floor Plan



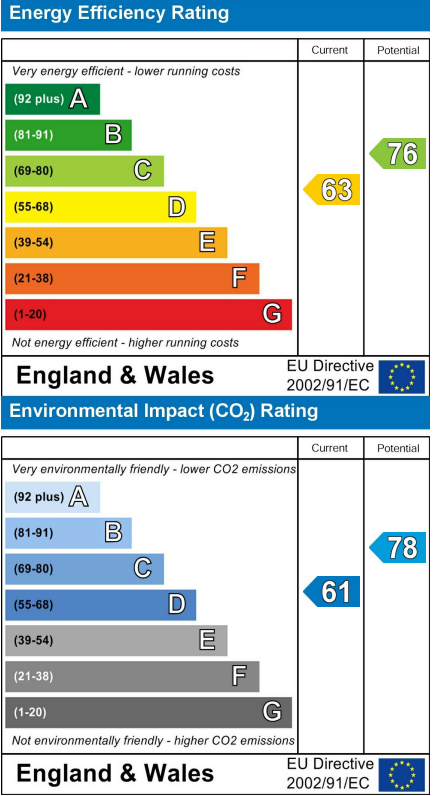
Area Map



Viewing

Please contact our James Edward Office on 020 7952 5197 if you wish to arrange a viewing appointment for this property or require further information.

Energy Efficiency Graph



These particulars, whilst believed to be accurate are set out as a general outline only for guidance and do not constitute any part of an offer or contract. Intending purchasers should not rely on them as statements of representation of fact, but must satisfy themselves by inspection or otherwise as to their accuracy. No person in this firms employment has the authority to make or give any representation or warranty in respect of the property.