

chris hamriding

lettings & estate agents



3 Vixen Drive, Congleton, CW12 1TT

£364,995

Show homes and sales centre now open

The attractive three-bedroom Henley Waterside is a home that combines timeless aesthetics with modern living, set close to the River Dane in Congleton. On the ground floor, you'll find a spacious kitchen and dining area that opens seamlessly into the garden through elegant French doors, perfect for hosting gatherings or enjoying peaceful moments outdoors. A separate lounge provides a cosy retreat for relaxing at the end of the day. Upstairs, the primary bedroom and bedroom three both feature Juliet balconies, while the primary also includes an en-suite shower room. A well-appointed family bathroom completes the first floor, offering comfort and practicality for everyday living.

Woodland Manor, a beautiful new housing development by Castle Green Homes nestled alongside the picturesque River Dane in Congleton, Cheshire. Offering a stunning selection of 3 and 4 bedroom homes, Woodland Manor combines modern living with the tranquil charm of waterside living. The development is designed to provide a welcoming community atmosphere, featuring unique yet stylish homes that blend seamlessly into the natural landscape. With its exceptional location and thoughtfully designed properties, Woodland Manor is the perfect place to call home.

Lounge 18'4" x 10'7" (5.59 x 3.23)

Kitchen/dining 18'4" x 9'6" (5.59 x 2.91)

Utility 6'11" x 6'5" (2.13 x 1.98)

Cloaks

Stairs and landing

Bedroom one 11'3" x 9'8" (3.43 x 2.95)

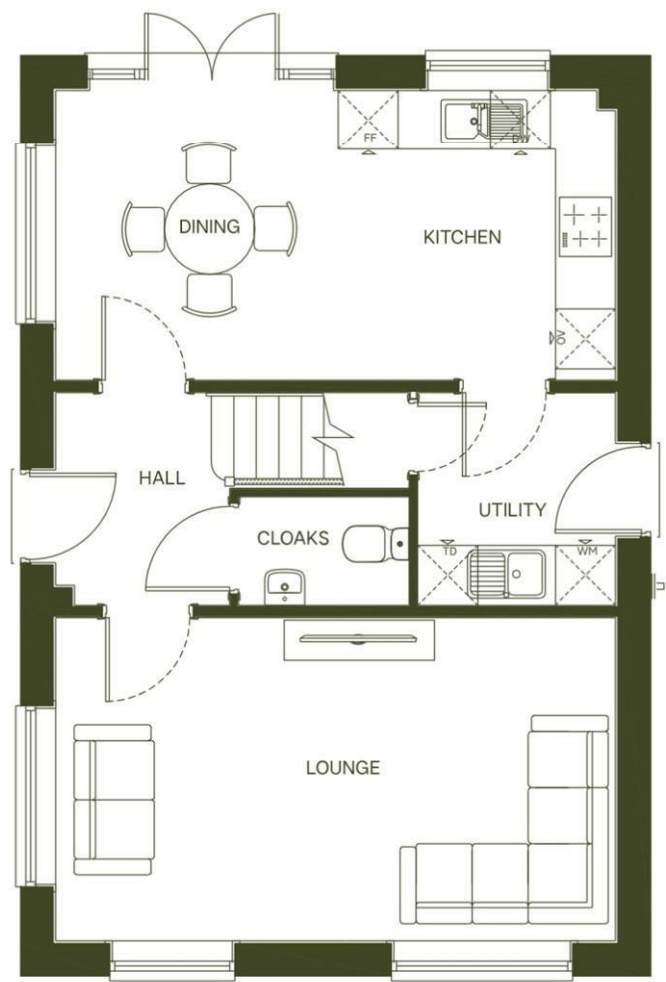
En suite 6'10" x 5'11" (2.09 x 1.81)

Bedroom two 10'8" x 9'0" (3.27 x 2.75)

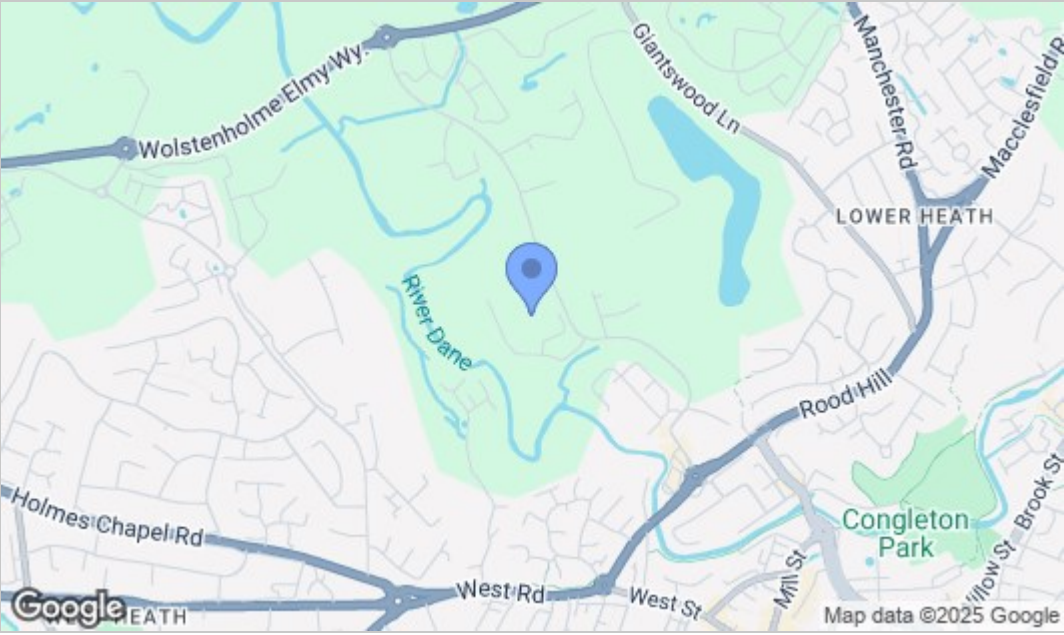
Bedroom three 10'8" x 9'0" (3.27 x 2.75)

Bathroom 6'11" x 5'6" (2.13 x 1.70)

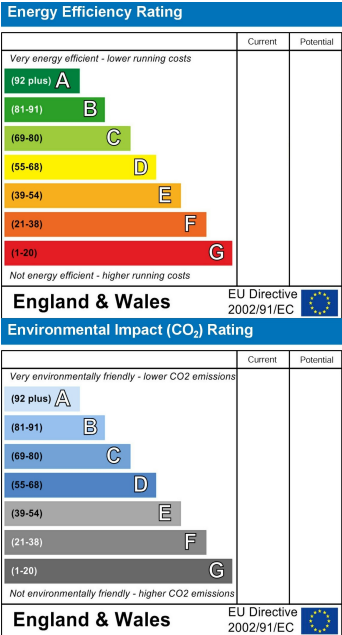
Floor Plan



Area Map



Energy Efficiency Graph



NOTICE Chris Hamriding Lettings & Estate Agents for themselves and for the vendor or lessors of this property whose agents they are given notice that: (i) the particulars are set out as a general outline only for the guidance of intending purchasers or lessees, and do not constitute, nor constitute part of, an offer of contract, (ii), all descriptions, dimensions, references to condition and necessary permissions for use and occupation, and other details are given in good faith and are believed to be correct but any intending purchasers or tenants should not rely on them as statement or representation of fact but must satisfy themselves by inspection or otherwise as to the correctness of each of them, (iii) no person in the employment of Chris Hamriding Lettings & Estate Agents has any authority to make or give any representation or warranty whatever in relation to this property.