

# chris hamriding

lettings & estate agents



## 14 Adderbank Drive, Congleton, CW12 1TR

**£369,995**

\*\*\*Show homes and sales centre now open\*\*\*

Discover the Stratford Waterside, a charming three-bedroom home set close to the River Dane in Congleton in a tranquil, sought-after location. With its inviting canopy porch, the Stratford offers a spacious, thoughtfully designed interior ideal for modern living. At its heart is an open-plan kitchen and dining area, perfect for cooking, dining and gathering with loved ones, complemented by a cosy lounge for relaxed evenings in. Upstairs, the primary bedroom features an en-suite and Juliet balcony, with two further bedrooms and a sleek family bathroom completing the first floor. Blending comfort and style, the Stratford Waterside offers a calm, well-connected retreat from the everyday hustle.

Woodland Manor is a beautiful new housing development by Castle Green Homes nestled alongside the picturesque River Dane in Congleton, Cheshire. Offering a stunning selection of 3 and 4 bedroom homes, Woodland Manor combines modern living with the tranquil charm of waterside living. The development is designed to provide a welcoming community atmosphere, featuring unique yet stylish homes that blend seamlessly into the natural landscape. With its exceptional location and thoughtfully designed properties, Woodland Manor is the perfect place to call home.

**Lounge 15'4" x 11'9" (4.68 x 3.6)**

**Kitchen/dining 20'11" x 8'11" (6.38 x 2.74 )**

**Cloaks**

**Stairs and landing**

**Bedroom one 20'11" x 10'1" (6.39 x 3.09)**

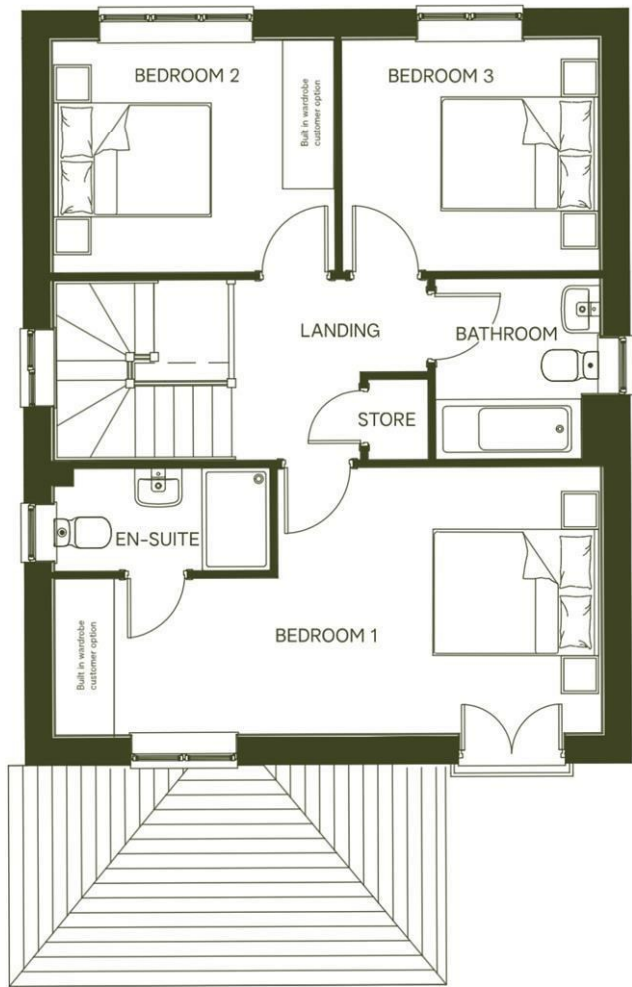
**En suite 8'5" x 4'0" (2.57 x 1.22)**

**Bedroom two 10'11" x 9'0" (3.34 x 2.75)**

**Bedroom three 10'0" x 9'0" (3.05 x 2.76)**

**Bathroom 6'10" x 3'6" (2.09 x 1.08)**

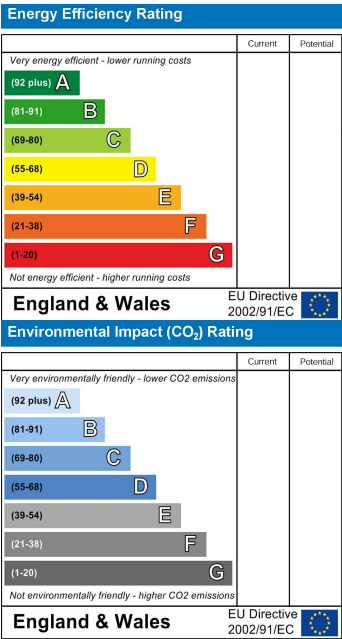
Floor Plan



Area Map



Energy Efficiency Graph



NOTICE Chris Hamriding Lettings & Estate Agents for themselves and for the vendor or lessors of this property whose agents they are given notice that: (i) the particulars are set out as a general outline only for the guidance of intending purchasers or lessees, and do not constitute, nor constitute part of, an offer of contract, (ii), all descriptions, dimensions, references to condition and necessary permissions for use and occupation, and other details are given in good faith and are believed to be correct but any intending purchasers or tenants should not rely on them as statement or representation of fact but must satisfy themselves by inspection or otherwise as to the correctness of each of them, (iii) no person in the employment of Chris Hamriding Lettings & Estate Agents has any authority to make or give any representation or warranty whatever in relation to this property.