

chris hamriding

lettings & estate agents



236 Congleton Road North, Scholar Green, ST7 3HQ

Prices From £645,000

PRICES FROM £645,000

Brand new homes of this nature are a rare find in today market! Having been crafted by artisan local builders of some repute, here we have two identical detached homes that lucky buyers can come along and take their pick of! Whichever side you choose, you are assured a home of exactly high quality, superior energy efficiency and abundant luxury! With over 2,300 square feet of beautiful internal space, these luxury new homes offer the perfect lifestyle for discerning buyers to come along and enjoy decades of family friendly living from the moment you turn the key!

The master bedroom enjoys a huge walk in dressing room along with one of the three luxury bathrooms whilst the remaining four bedrooms are all of double proportions and enjoy excellent views of the established local area.

The ground floor welcomes you into a pleasant and bright hallway giving access to a spacious and comfortable lounge along with the integral double garage. The star of the show however just has to be the breathtaking living kitchen with high specification and on trend bi fold doors into the huge rear gardens! Complementing the kitchen is a separate utility room and generous guest cloaks.

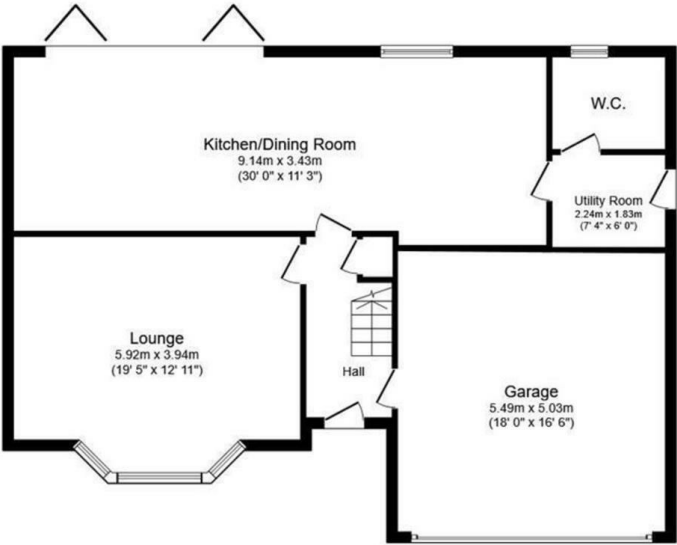
Last but not least, the homes both enjoy spacious, private lawned gardens to the rear and large block paved driveways to the front.

The local area is highly desirable and awash with countryside, commuter links, village amenities and good access to both the towns of Congleton & Alsager providing a range of schooling options and leisure facilities.

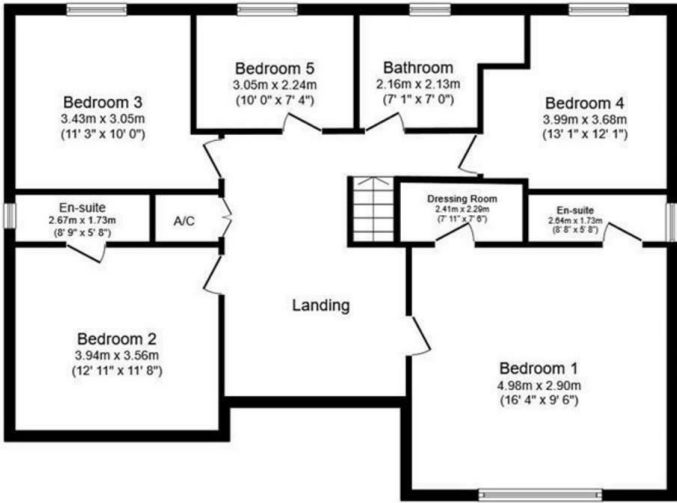
Worth noting is that Manchester Airport is approx 40 minutes away but car.

We could talk about these two homes all day long but don't just take our word for it! Read on to find out more, view our video, photos and floor plan then call us here at Chris Hamriding Estate Agents to book yourself that all important viewing!

Floor Plan



Ground Floor
Floor area 106.9 sq.m. (1,150 sq.ft.)

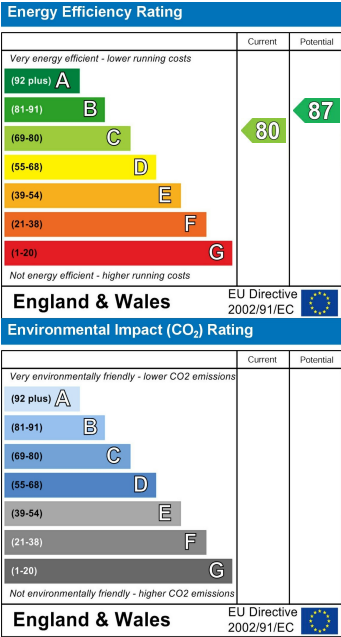


First Floor
Floor area 108.1 sq.m. (1,164 sq.ft.)

Area Map



Energy Efficiency Graph



NOTICE Chris Hamriding Lettings & Estate Agents for themselves and for the vendor or lessors of this property whose agents they are given notice that: (i) the particulars are set out as a general outline only for the guidance of intending purchasers or lessees, and do not constitute, nor constitute part of, an offer of contract, (ii), all descriptions, dimensions, references to condition and necessary permissions for use and occupation, and other details are given in good faith and are believed to be correct but any intending purchasers or tenants should not rely on them as statement or representation of fact but must satisfy themselves by inspection or otherwise as to the correctness of each of them, (iii) no person in the employment of Chris Hamriding Lettings & Estate Agents has any authority to make or give any representation or warranty whatever in relation to this property.