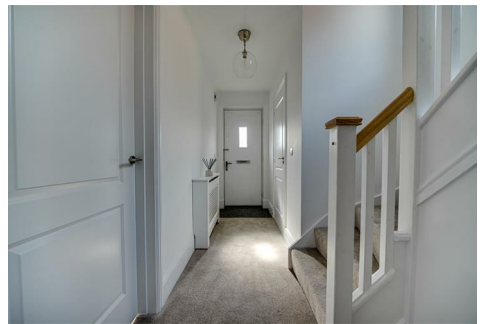
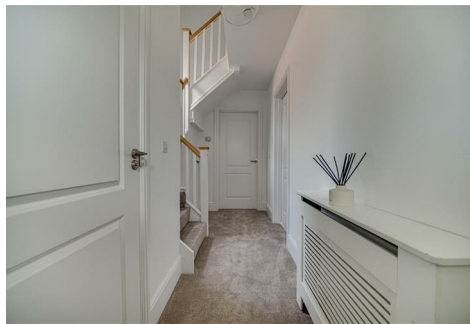


# chris hamriding

lettings & estate agents



## 2 Adler Road, Congleton, CW12 1GJ

### £1,800 Per Month

AVAILABLE NOW!

A truly beautiful detached residence having been recently constructed by reputable builders 'Redrow Homes', this wonderfully appointed home known as 'The Stratford' is designed with modern and easy living in mind, the property is sure to suit a wide range of buyers whether you're a family, an upsizer, downsizer or perhaps even a savvy buy to let investor, this will tick your boxes with its low maintenance, high functionality design.

There are four beautiful bedrooms and two luxury bathrooms all accessed from the landing. The ground floor enjoys a welcoming reception hall, guest WC, comfortable lounge and striking dining kitchen with a beautiful fixtures and glazed doors into the gardens! Completing the interior is a most useful utility cupboard. Out in the rear gardens it's time to relax or entertain as the landscaped patio and lawns provide useful space for all the family. Finally, a driveway and detached garage complete the deal!

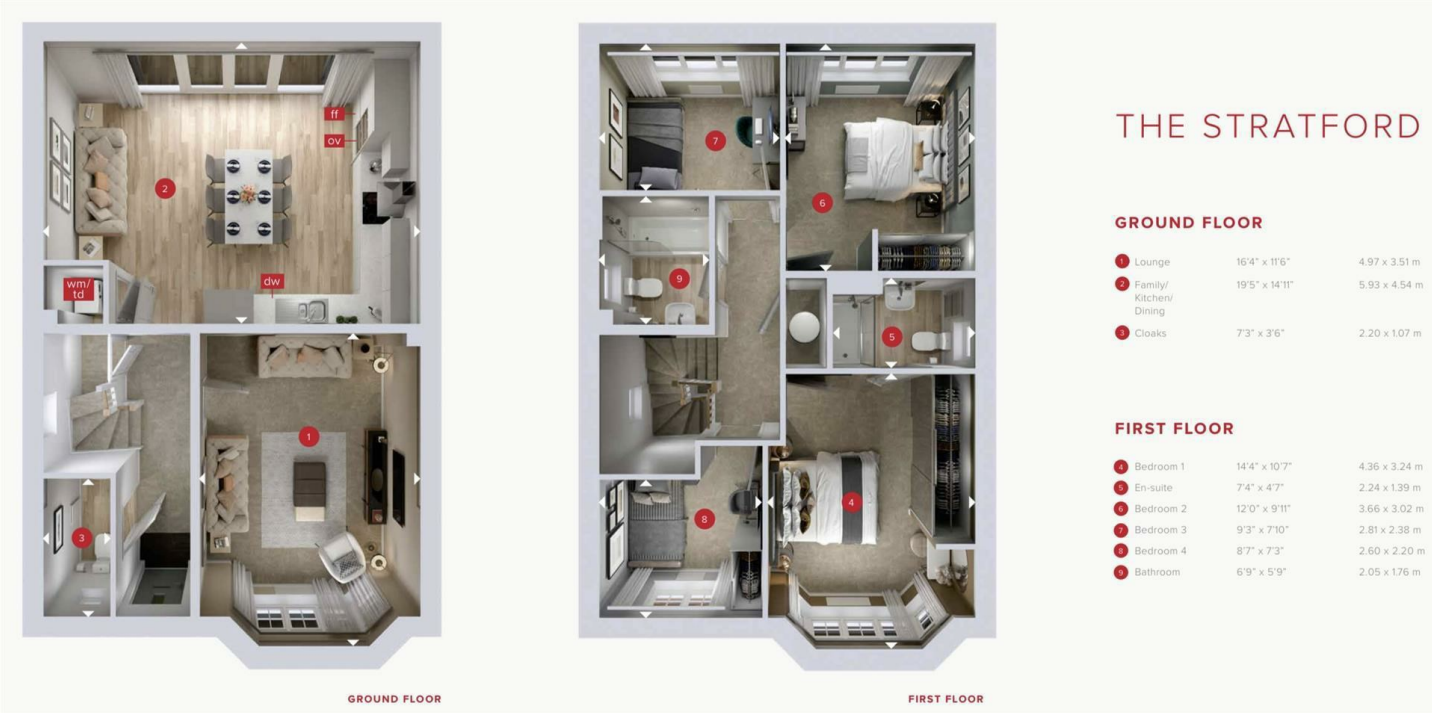
Locally, the immediate area is surrounded by miles of exclusive Cheshire countryside whilst efficient commuter links are easily accessed and excellent schools, amenities and leisure facilities are all in plentiful supply.

This truly is a home to be enjoyed from the moment you unpack your bags so read on to find out more, view our video, floor plan and photos then call us here at Chris Hamriding Estate Agents to book yourself that all important viewing!

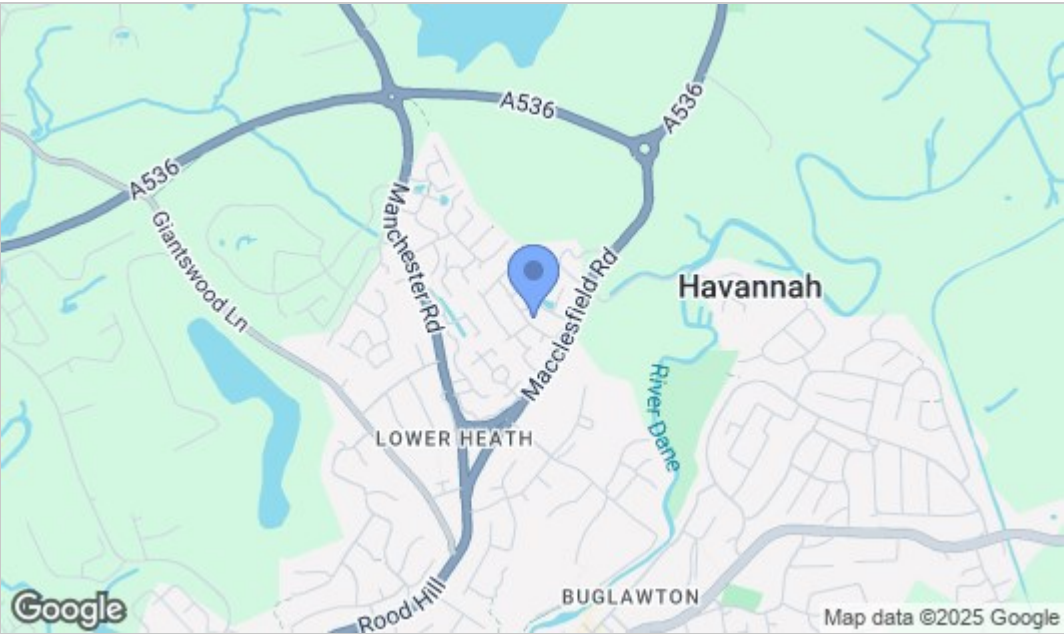




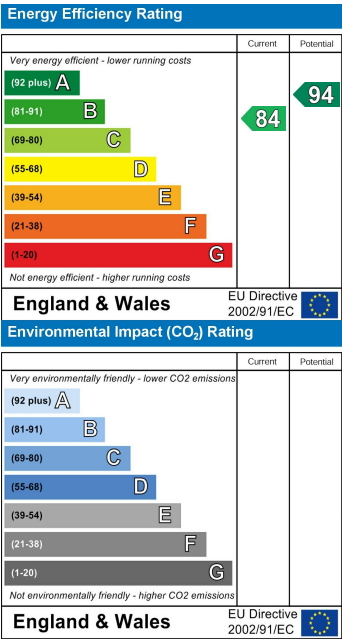
Floor Plan



Area Map



Energy Efficiency Graph



NOTICE Chris Hamriding Lettings & Estate Agents for themselves and for the vendor or lessors of this property whose agents they are given notice that: (i) the particulars are set out as a general outline only for the guidance of intending purchasers or lessees, and do not constitute, nor constitute part of, an offer of contract, (ii), all descriptions, dimensions, references to condition and necessary permissions for use and occupation, and other details are given in good faith and are believed to be correct but any intending purchasers or tenants should not rely on them as statement or representation of fact but must satisfy themselves by inspection or otherwise as to the correctness of each of them, (iii) no person in the employment of Chris Hamriding Lettings & Estate Agents has any authority to make or give any representation or warranty whatever in relation to this property.