

# chris hamriding

lettings & estate agents



## 14 Windsor Place, Congleton, CW12 3ET

### £1,800 Per Month

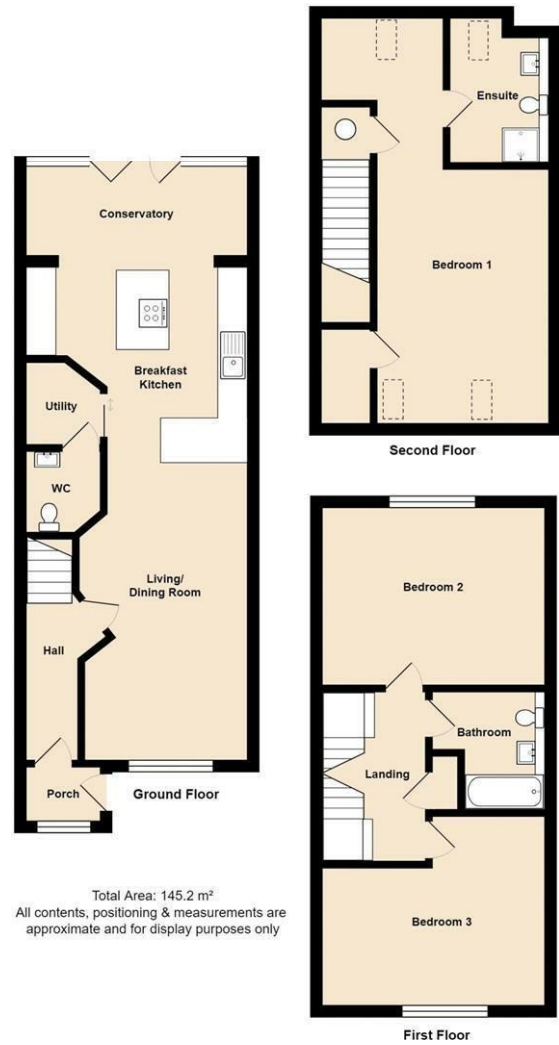
Enjoy this stunning designer home by watching our guided video tour then prepare to book yourself a viewing!

Tucked away at the head of a quiet cul de sac emerges this bespoke development of just a handful of gorgeous homes where our property in question exudes style and boasts fantastically proportioned accommodation across three floors! The kerb appeal of this home is apparent from the moment you set eyes on the contemporary exterior with its contrasting blacks and greys jumping out against the tasteful Cheshire brickwork. The aesthetic continues once you enter and moving through the home is genuinely a joy. A porch and entrance hall welcomes you to the lifestyle and the ground floor is just one of many show stoppers! Running from the very front to the stylish bifold doors at the rear, the entertaining and/or relaxing space thoroughly lends itself to a wide range of lifestyles and no matter how you choose to live, these high specification kitchen and living spaces will instantly make life easier and fun! Moving on up to the first floor and accessed from a galleried landing are two double bedrooms and a stylish bathroom suite, these rooms are palatial in their proportioned and we haven't even reached the master suite on the top floor yet...and it truly is deserving of the title 'Master Suite'! Commanding the entire top floor, the principal sleeping area is vast and has space for plenty of additional furniture, however, mitigating the need for large wardrobes is the dressing area and a built in store cupboard, both features that really add to the luxury feel. The en suite shower room is a calming, modern suite to prepare yourself before your busy days ahead and complements the bedroom perfectly. Outside the home to the front lies a driveway for two cars and an attractive lawn whilst the rear enjoys private lawned gardens and a patio terrace.

This truly is a breathtaking home so call us here at Chris Hamriding Letting Agents to book a viewing!

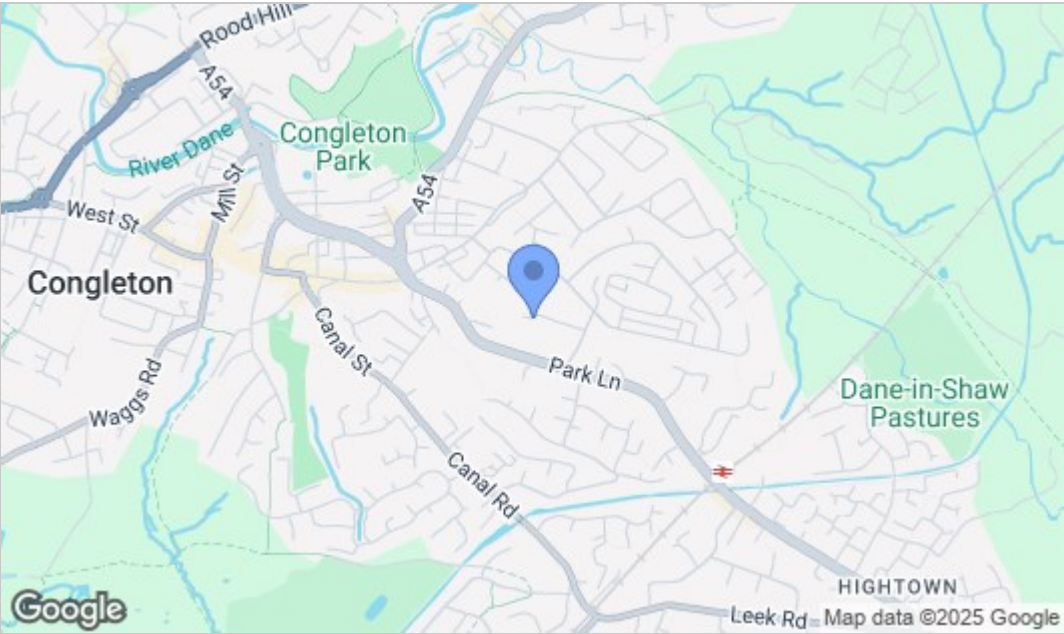
- Entrance Porch
- Entrance Hall
- Living/Diner/Kitchen
- Living Area
- Dining Area
- Living Kitchen Area
- First Floor
- Bedroom 3/Sitting Room
- Bedroom 2
- Bathroom
- Second Floor
- Master Bedroom
- En-Suite
- Outside
- Front
- Rear

Floor Plan

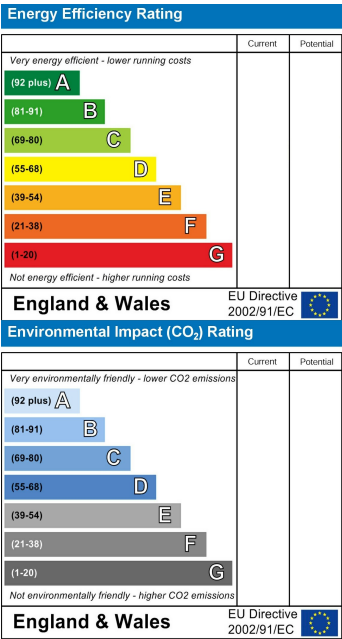


Total Area: 145.2 m<sup>2</sup>  
All contents, positioning & measurements are approximate and for display purposes only

Area Map



Energy Efficiency Graph



NOTICE Chris Hamriding Lettings & Estate Agents for themselves and for the vendor or lessors of this property whose agents they are given notice that: (i) the particulars are set out as a general outline only for the guidance of intending purchasers or lessees, and do not constitute, nor constitute part of, an offer of contract, (ii), all descriptions, dimensions, references to condition and necessary permissions for use and occupation, and other details are given in good faith and are believed to be correct but any intending purchasers or tenants should not rely on them as statement or representation of fact but must satisfy themselves by inspection or otherwise as to the correctness of each of them, (iii) no person in the employment of Chris Hamriding Lettings & Estate Agents has any authority to make or give any representation or warranty whatever in relation to this property.