

# chris hamriding

lettings & estate agents



## 9 Granary Lane, Congleton, CW12 1TU

**£443,995**

**\*\*Show Homes Now Open\*\***

Welcome to Woodland Manor, a beautiful new housing development by Castle Green Homes nestled alongside the picturesque River Dane in Congleton, Cheshire. Offering a stunning selection of 3 and 4 bedroom homes, Woodland Manor combines modern living with the tranquil charm of waterside living. The development is designed to provide a welcoming community atmosphere, featuring unique yet stylish homes that blend seamlessly into the natural landscape. With its exceptional location and thoughtfully designed properties, Woodland Manor is the perfect place to call home.

The 'Wentworth Lifestyle' is a stunning 3-bedroom home, with en-suite bathrooms for every bedroom, is thoughtfully designed to suit modern living. Step into the airy hallway and discover the spacious lounge, where a large bay window floods the room with natural light, creating a warm and welcoming atmosphere. At the rear of the property, you will find the spacious open-plan kitchen and dining area. A separate utility room and cloakroom add practicality, while the integrated single garage provides added storage space. Upstairs, the luxurious primary bedroom boasts a dressing area and an elegant en-suite bathroom. Bedroom two also enjoys its own en-suite, making it ideal for older children or visiting guests. The third bedroom, equally generous in size, is complemented by an en-suite, offering everyone their own private retreat. Could the Wentworth Lifestyle be your perfect home in Congleton?

## **Woodland Manor**

Welcome to Woodland Manor, a beautiful new housing development by Castle Green Homes nestled alongside the picturesque River Dane in Congleton, Cheshire. Offering a stunning selection of 3 and 4 bedroom homes, Woodland Manor combines modern living with the tranquil charm of waterside living. The development is designed to provide a welcoming community atmosphere, featuring unique yet stylish homes that blend seamlessly into the natural landscape. With its exceptional location and thoughtfully designed properties, Woodland Manor is the perfect place to call home.

**Lounge 16'3 x 10'11 (4.95m x 3.33m)**

**Clockroom 6'5 x 3' (1.96m x 0.91m)**

**Kitchen/ Dining/ Family 11'6 x 25'4 (3.51m x 7.72m)**

**Utility 6'5 x 5'11 (1.96m x 1.80m)**

**Garage 18'1 x 8'11 (5.51m x 2.72m)**

**Bedroom one 11'6 x 10' (3.51m x 3.05m)**

**Dressing area 7'11 x 7'1 (2.41m x 2.16m)**

**Ensuite 8'6 x 4'7 (2.59m x 1.40m)**

**Bedroom two 12'10 x 10'11 (3.91m x 3.33m)**

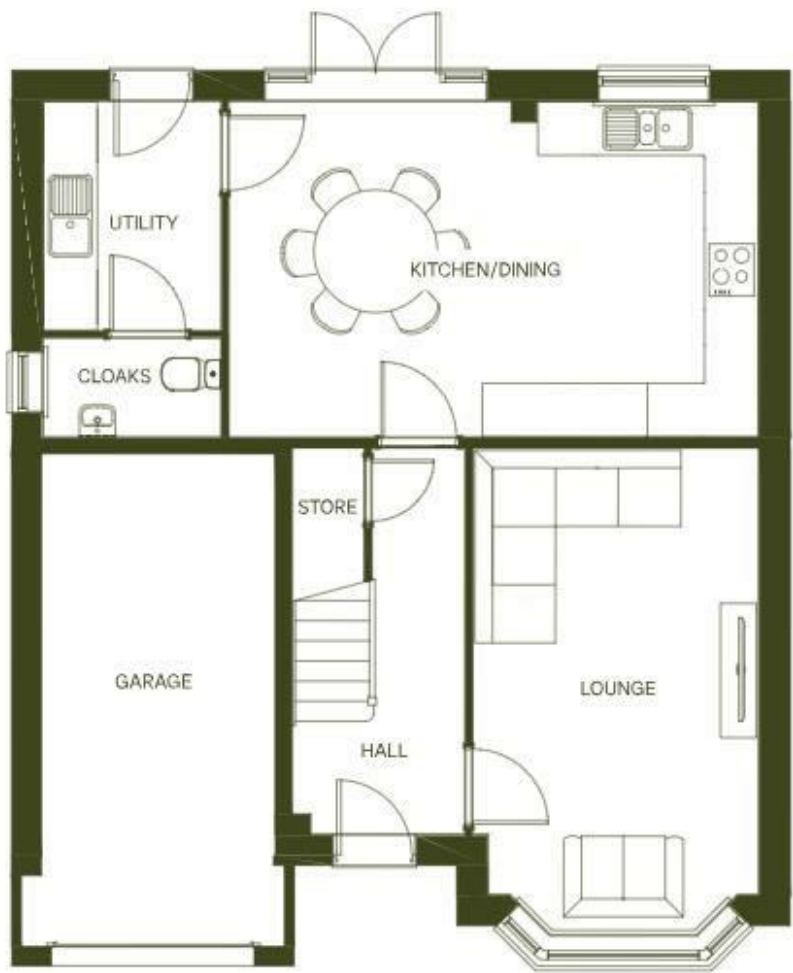
**Ensuite two 8'9 x 4'7 (2.67m x 1.40m)**

**Bedroom three 14'6 x 9'3 (4.42m x 2.82m)**

**Ensuite three 8'3 x 6'2 (2.51m x 1.88m)**



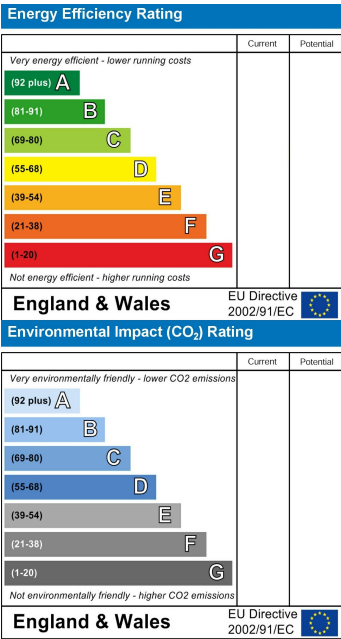
Floor Plan



Area Map



Energy Efficiency Graph



NOTICE Chris Hamriding Lettings & Estate Agents for themselves and for the vendor or lessors of this property whose agents they are given notice that: (i) the particulars are set out as a general outline only for the guidance of intending purchasers or lessees, and do not constitute, nor constitute part of, an offer of contract, (ii), all descriptions, dimensions, references to condition and necessary permissions for use and occupation, and other details are given in good faith and are believed to be correct but any intending purchasers or tenants should not rely on them as statement or representation of fact but must satisfy themselves by inspection or otherwise as to the correctness of each of them, (iii) no person in the employment of Chris Hamriding Lettings & Estate Agents has any authority to make or give any representation or warranty whatever in relation to this property.