

chris hamriding

lettings & estate agents



7 Granary Lane, Congleton, CW12 1TU

£444,995

****Show Homes Now Open****

Welcome to Woodland Manor, a beautiful new housing development by Castle Green Homes nestled alongside the picturesque River Dane in Congleton, Cheshire. Offering a stunning selection of 3 and 4 bedroom homes, Woodland Manor combines modern living with the tranquil charm of waterside living. The development is designed to provide a welcoming community atmosphere, featuring unique yet stylish homes that blend seamlessly into the natural landscape. With its exceptional location and thoughtfully designed properties, Woodland Manor is the perfect place to call home.

The Heatherington - Great first impressions are key to finding your dream home and that's certainly what you get with The Heatherington at Woodland Manor. Open the front door to find a spacious hallway welcoming you to this stylish new home. On the left you will discover a living room running the whole length of the house offering plenty of space and light. To the right a generous kitchen, dining and family area with French doors leading onto the garden, creating the perfect family space. A laundry room and cloakroom complete the ground floor. On the first floor you will experience the wonderful master bedroom with en suite. Three further bedrooms along with a family bathroom complete this beautiful new home. Are you ready to make the Heatherington your new home in Congleton?

Lounge 20'2 x 12'4 (6.15m x 3.76m)

Cloakroom 5'2 x 3'7 (1.57m x 1.09m)

Kitchen/ Dining/ Family 23'6 x 11'4 (7.16m x 3.45m)

Utility 6'11 x 5'7 (2.11m x 1.70m)

Bedroom one 12'9 x 11'5 (3.89m x 3.48m)

Ensuite 5'7 x 8'4 (1.70m x 2.54m)

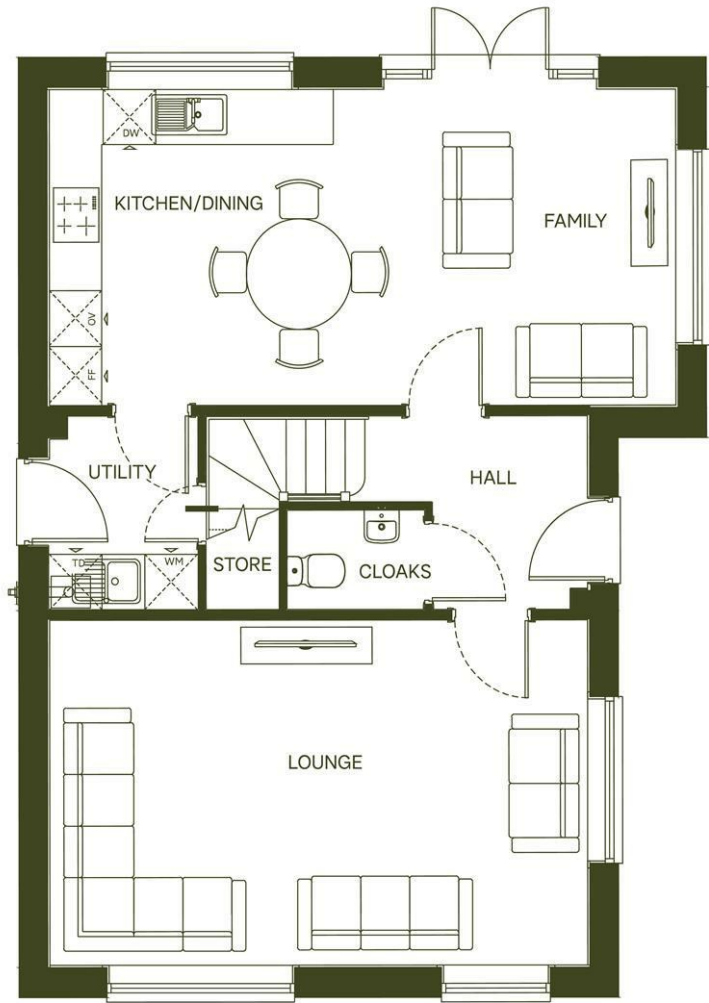
Bedroom two 10'11 x 10'8 (3.33m x 3.25m)

Bedroom three 11'4 x 10'6 (3.45m x 3.20m)

Bedroom four 12'3 x 9'3 (3.73m x 2.82m)

Bathroom 7'1 x 5'7 (2.16m x 1.70m)

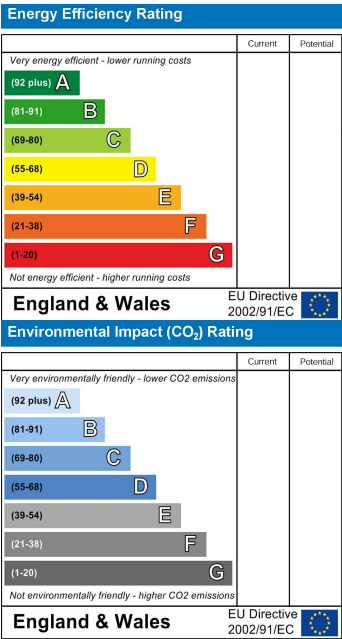
Floor Plan



Area Map



Energy Efficiency Graph



NOTICE Chris Hamriding Lettings & Estate Agents for themselves and for the vendor or lessors of this property whose agents they are given notice that: (i) the particulars are set out as a general outline only for the guidance of intending purchasers or lessees, and do not constitute, nor constitute part of, an offer of contract, (ii), all descriptions, dimensions, references to condition and necessary permissions for use and occupation, and other details are given in good faith and are believed to be correct but any intending purchasers or tenants should not rely on them as statement or representation of fact but must satisfy themselves by inspection or otherwise as to the correctness of each of them, (iii) no person in the employment of Chris Hamriding Lettings & Estate Agents has any authority to make or give any representation or warranty whatever in relation to this property.