

# chris hamriding

lettings & estate agents



## 14 Cumberbatch Square, Congleton, CW12 4HQ

Offers In The Region Of £650,000

Enjoy this superb country residence by watching our guided video tour, we're sure you won't be disappointed!

Nestled in the heart of some of Cheshires most beautiful countryside within a most affluent and sought after rural hamlet and set in the grounds of Somerford Booths Hall, this recently built home is most attractive and enjoys a stylish yet classic aesthetic that's sure to impress. Inside the property the accommodation flows very well across all rooms and the 1900+ square feet (approx) of internal space could surely suit a wide range of buyers needs. Since its construction in 2021, the home has been vastly improved by the current owners with high end flooring, bespoke bedroom furniture and much more thus meaning new owners can move in and enjoy the Cheshire Life from day one!

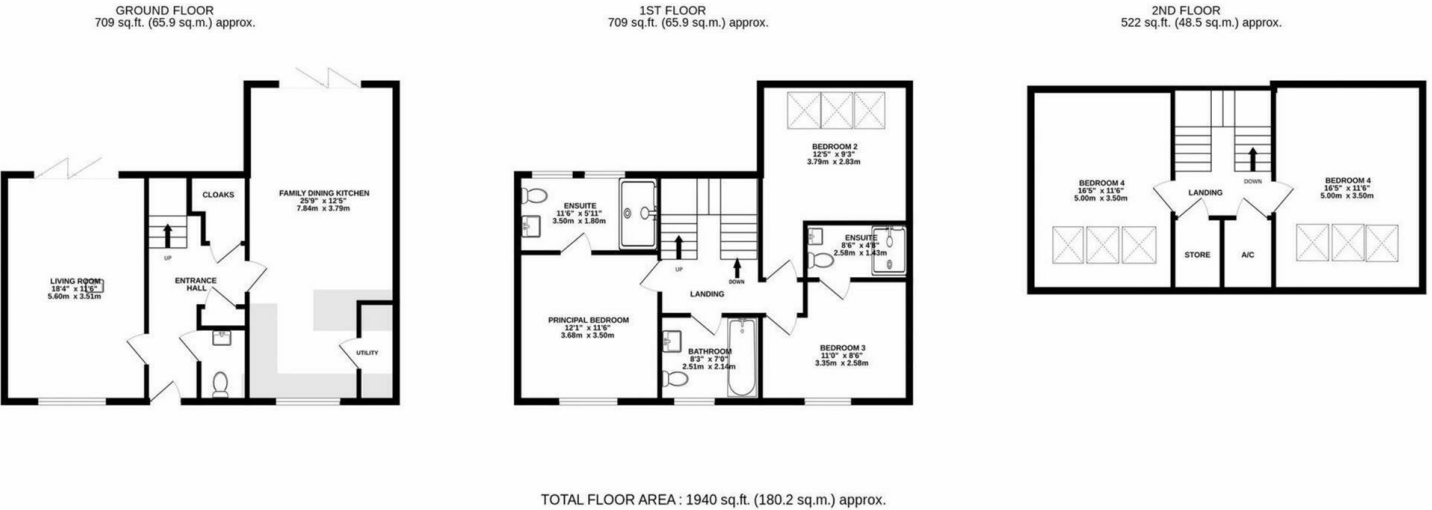
Locally, an array of amenities, leisure facilities, commuter links, private & state schools and much more are available at the various neighbouring towns & villages of Alderley Edge, Holmes Chapel, Congleton, Macclesfield and more.

It's worth noting that being located so close to so many areas whilst also being surrounded by countryside means that plenty of country pursuits such as equestrian facilities, golf courses, walking routes and more are also part of the lifestyle!

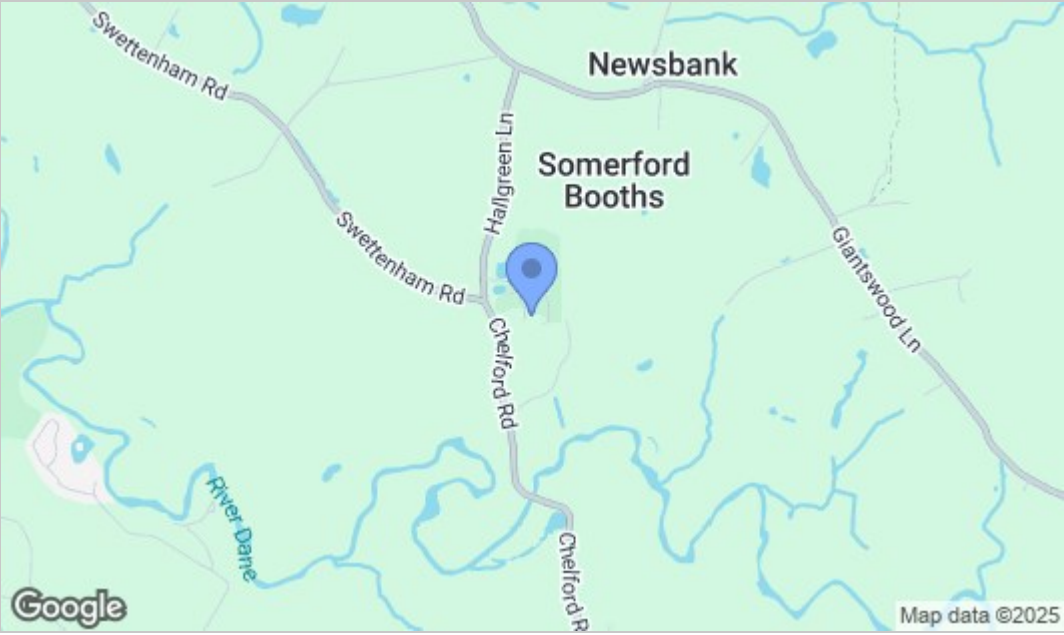
We could talk about this amazing opportunity all day long so take a few moments to view our video,, photos and floor plans then call the Cheshire town & country experts here at Chris Hamriding Estate Agents to book yourself that all important viewing!



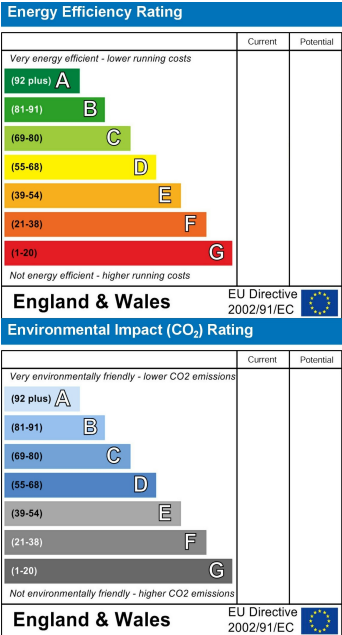
Floor Plan



Area Map



Energy Efficiency Graph



NOTICE Chris Hamriding Lettings & Estate Agents for themselves and for the vendor or lessors of this property whose agents they are given notice that: (i) the particulars are set out as a general outline only for the guidance of intending purchasers or lessees, and do not constitute, nor constitute part of, an offer of contract, (ii), all descriptions, dimensions, references to condition and necessary permissions for use and occupation, and other details are given in good faith and are believed to be correct but any intending purchasers or tenants should not rely on them as statement or representation of fact but must satisfy themselves by inspection or otherwise as to the correctness of each of them, (iii) no person in the employment of Chris Hamriding Lettings & Estate Agents has any authority to make or give any representation or warranty whatever in relation to this property.