



## The Windermere Woodland Manor, Congleton, CW12 1TT

### Offers In The Region Of £439,995

Indulge in the elegance and contemporary features of The Windermere at Woodland Manor in Congleton, Cheshire—a home that effortlessly combines stylish design with modern comforts. From the moment you step into the welcoming hallway, you'll be captivated. The spacious living room offers a comfortable retreat after a long day. At the heart of The Windermere lies the open-plan kitchen, dining, and family area, forming the vibrant centrepiece of this beautiful home. This spacious and inviting space is where culinary creations come to life and memories are made around the dining table. The first floor unveils four generously proportioned bedrooms, each offering plenty of space for relaxation and personalisation. The en-suite primary bedroom becomes your private sanctuary, a place to retreat and rejuvenate. The remaining bedrooms provide ample room for family members or guests, ensuring that everyone has their own personal haven within the house. To enhance convenience and functionality, The Windermere features a utility room and cloakroom, catering to the needs of busy family life. Additionally, an integrated garage and extra storage space allow for added convenience. The Windermere at Woodland Manor is more than just a house—it's a home of distinction, where elegant design and contemporary features intertwine to create an idyllic family home in Congleton. Are you ready to make the Windermere your new home in Congleton?

## **Woodland Manor**

Indulge in the elegance and contemporary features of The Windermere at Woodland Manor in Congleton, Cheshire—a home that effortlessly combines stylish design with modern comforts. From the moment you step into the welcoming hallway, you'll be captivated. The spacious living room offers a comfortable retreat after a long day. At the heart of The Windermere lies the open-plan kitchen, dining, and family area, forming the vibrant centrepiece of this beautiful home. This spacious and inviting space is where culinary creations come to life and memories are made around the dining table. The first floor unveils four generously proportioned bedrooms, each offering plenty of space for relaxation and personalisation. The en-suite primary bedroom becomes your private sanctuary, a place to retreat and rejuvenate. The remaining bedrooms provide ample room for family members or guests, ensuring that everyone has their own personal haven within the house. To enhance convenience and functionality, The Windermere features a utility room and cloakroom, catering to the needs of busy family life. Additionally, an integrated garage and extra storage space allow for added convenience. The Windermere at Woodland Manor is more than just a house—it's a home of distinction, where elegant design and contemporary features intertwine to create an idyllic family home in Congleton. Are you ready to make the Windermere your new home in Congleton?

**Lounge 16'3 x 10'11 (4.95m x 3.33m)**

**Kitchen/ Dining/ Family 15'4 x 11'6 (4.67m x 3.51m)**

**Utility 6'5 x 5'11 (1.96m x 1.80m)**

**Cloakroom 6'5 x 3'0 (1.96m x 0.91m)**

**Bedroom one 12'10 x 10'11 (3.91m x 3.33m)**

**Ensuite 8'9 x 4'7 (2.67m x 1.40m)**

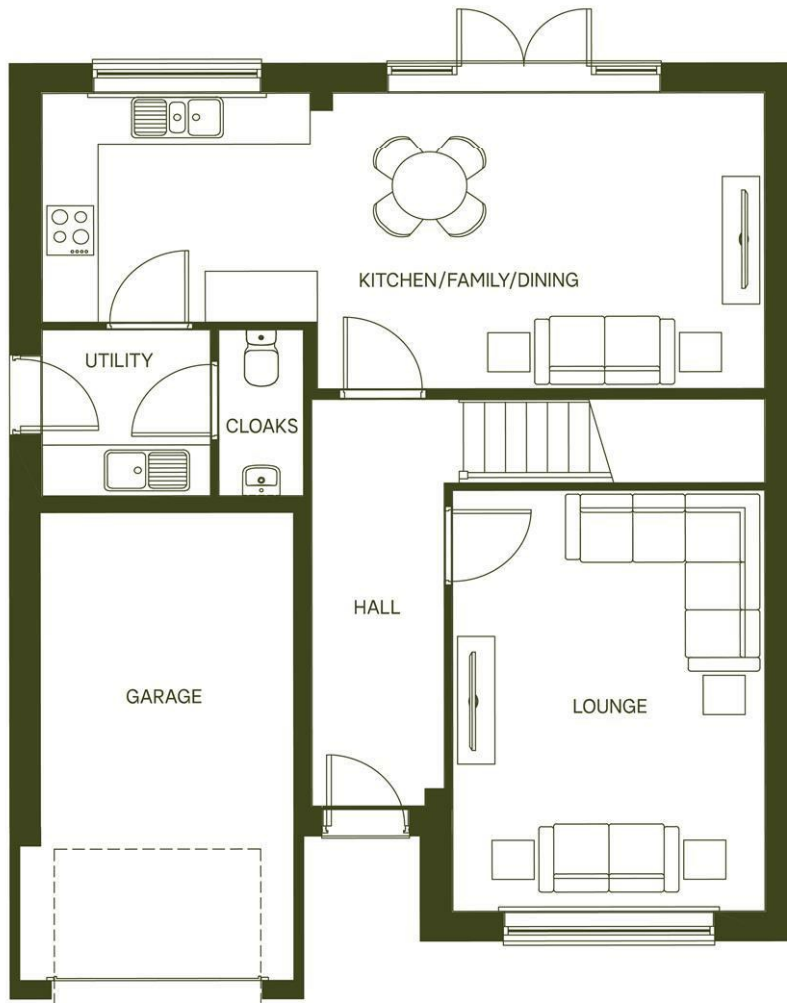
**Bedroom two 14'6 x 9'3 (4.42m x 2.82m)**

**Bedroom three 12'8 x 9'3 (3.86m x 2.82m)**

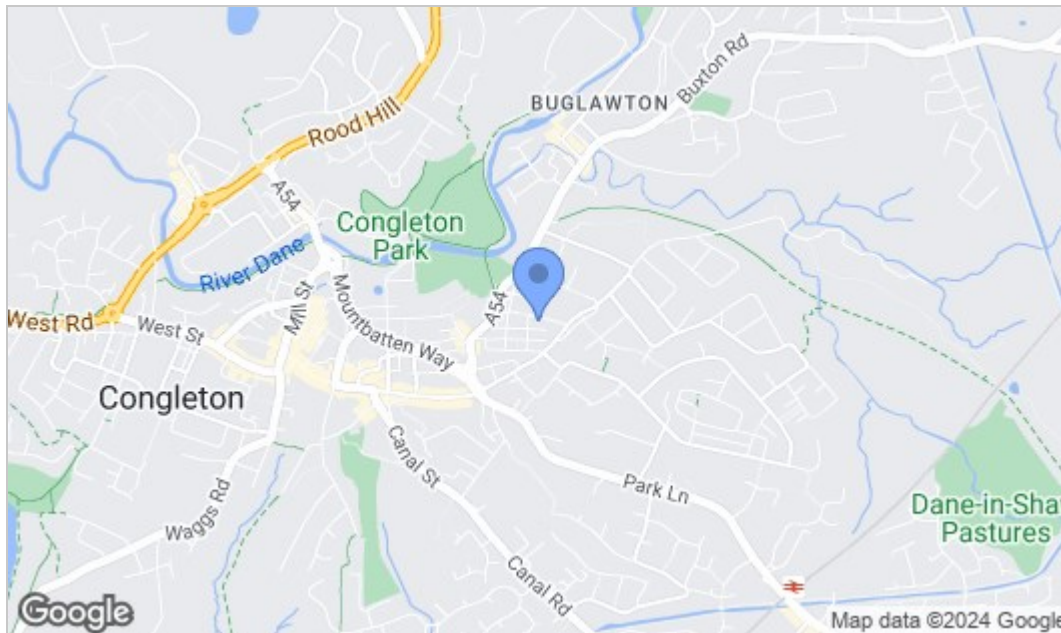
**Bedroom four 11'6 x 9'1 (3.51m x 2.77m)**

**Bathroom 6'10 x 6'5 (2.08m x 1.96m)**

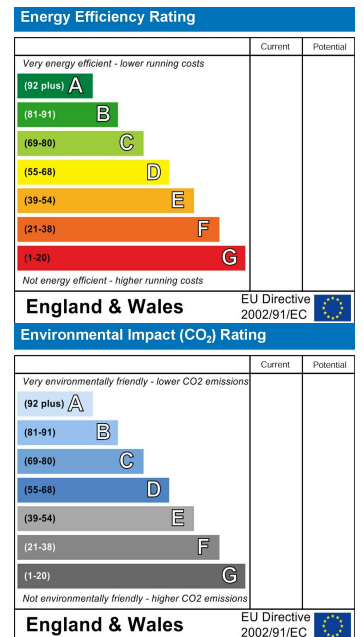
## Floor Plan



## Area Map



## Energy Efficiency Graph



NOTICE Chris Hamriding Lettings & Estate Agents for themselves and for the vendor or lessors of this property whose agents they are given notice that: (i) the particulars are set out as a general outline only for the guidance of intending purchasers or lessees, and do not constitute, nor constitute part of, an offer of contract, (ii), all descriptions, dimensions, references to condition and necessary permissions for use and occupation, and other details are given in good faith and are believed to be correct but any intending purchasers or tenants should not rely on them as statement or representation of fact but must satisfy themselves by inspection or otherwise as to the correctness of each of them, (iii) no person in the employment of Chris Hamriding Lettings & Estate Agents has any authority to make or give any representation or warranty whatever in relation to this property.