



The Marlow Woodland Manor, Congleton, CW12 1TT

Offers In The Region Of £309,995

LAUNCH EVENING AT THE ORANGE TREE, CONGLETON, THURSDAY 11TH JULY 4:30PM - 7:30PM. EVERYONE WELCOME!

Discover the allure of The Marlow at Woodland Manor in Congleton, Cheshire—a splendid 3-bedroom semi-detached home meticulously designed to cater to the needs of first-time buyers or downsizers. Offering both style and functionality, this residence presents a delightful living experience. Upon entering, you'll be greeted by a light and airy lounge, radiating a sense of warmth and tranquillity. This inviting space serves as the gateway to the heart of the home—an open-plan kitchen and dining room. The seamless flow between these areas creates a sense of connectivity, while French doors gracefully open to reveal the garden at the rear, allowing natural light to flood in and truly bringing the outside in. Imagine hosting memorable gatherings or savouring everyday meals in this harmonious space, surrounded by the beauty of nature. As you ascend to the first floor, you'll discover the generously proportioned bedrooms, ensuring ample space for rest and relaxation. The main bedroom stands out with its spaciousness, offering a private enclave for rejuvenation. En-suite facilities provide convenience and privacy, adding a touch of luxury to your daily routine. Additionally, the sleek family bathroom exudes modern elegance, providing a stylish retreat where you can indulge in moments of tranquillity and self-care. The Marlow at Woodland Manor, Congleton is a home that goes beyond its functional design—it's a sanctuary where comfort and sophistication converge. Whether you're embarking on your homeownership journey or seeking a downsized lifestyle, this residence is the epitome of modern living. Experience the harmonious blend of space, natural light, and contemporary aesthetics in this exceptional abode. Are you ready to make the Marlow your new home in Congleton?

Woodland Manor

Welcome to Woodland Manor, a beautiful new housing development by Castle Green Homes nestled alongside the picturesque River Dane in Congleton, Cheshire. Offering a stunning selection of 3 and 4 bedroom homes, Woodland Manor combines modern living with the tranquil charm of waterside living. The development is designed to provide a welcoming community atmosphere, featuring unique yet stylish homes that blend seamlessly into the natural landscape. With its exceptional location and thoughtfully designed properties, Woodland Manor is the perfect place to call home.

Lounge 16'9 x 10'10 (5.11m x 3.30m)

Cloakroom 5'8 x 2'11 (1.73m x 0.89m)

Kitchen/ Dining 17'11 x 11'3 (5.46m x 3.43m)

Bedroom one 13'3 x 10'11 (4.04m x 3.33m)

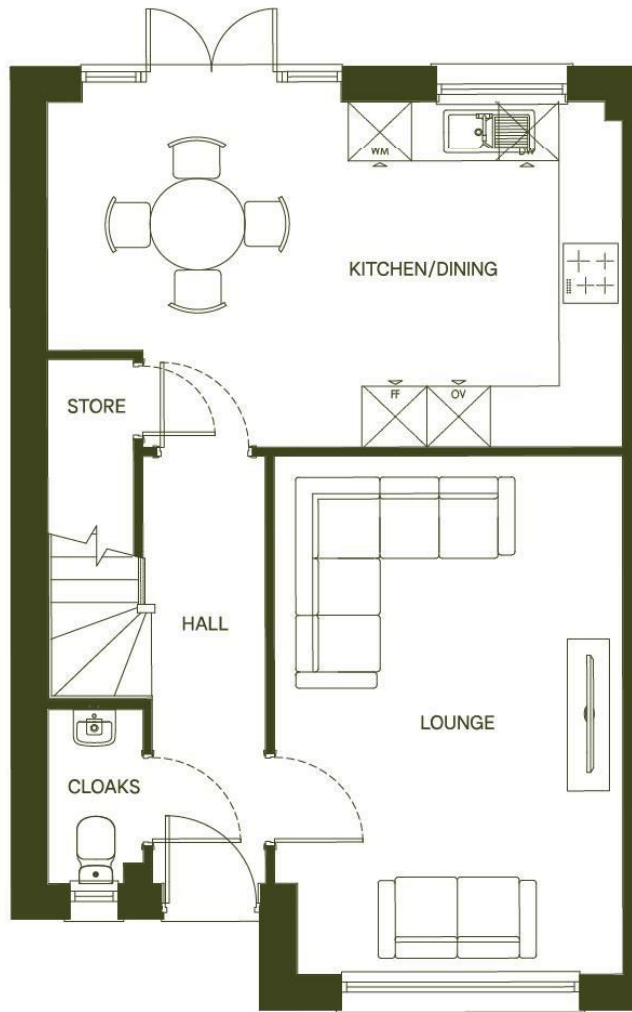
Ensuite 7'2 x 3'11 (2.18m x 1.19m)

Bedroom two 10'7 x 10'1 (3.23m x 3.07m)

Bedroom three 9'2 x 7'7 (2.79m x 2.31m)

Bathroom 8'10 x 6'8 (2.69m x 2.03m)

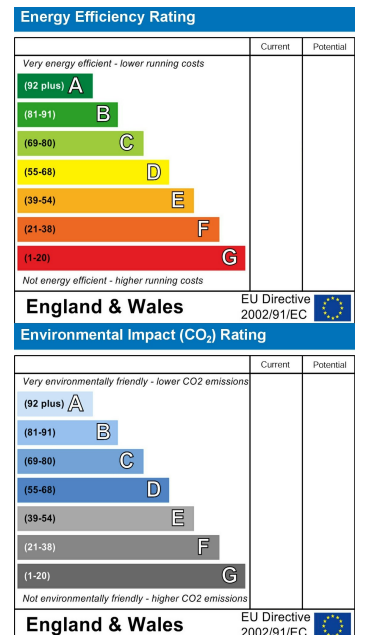
Floor Plan



Area Map



Energy Efficiency Graph



NOTICE Chris Hamriding Lettings & Estate Agents for themselves and for the vendor or lessors of this property whose agents they are given notice that: (i) the particulars are set out as a general outline only for the guidance of intending purchasers or lessees, and do not constitute, nor constitute part of, an offer of contract, (ii) all descriptions, dimensions, references to condition and necessary permissions for use and occupation, and other details are given in good faith and are believed to be correct but any intending purchasers or tenants should not rely on them as statement or representation of fact but must satisfy themselves by inspection or otherwise as to the correctness of each of them, (iii) no person in the employment of Chris Hamriding Lettings & Estate Agents has any authority to make or give any representation or warranty whatever in relation to this property.



9 High Street, Town Centre, Congleton, Cheshire, CW12 1BN t: 01260 543 999 chrishamriding.co.uk sales@chrishamriding.co.uk lettings@chrishamriding.co.uk

