



6 Galbraith Close, Congleton, CW12 4WG

Offers In The Region Of £285,000

Tucked away in a hugely attractive corner of Congleton just a stones throw from the beautiful 'Astbury Mere Country Park', this spacious home offers a stunning lifestyle to suit a wide range of buyers. The flexibility of the layout is sure to pique the interest whether you're after an exciting upside or a practical downsize. To best explain the layout, take a look at our guided video tour and cast your eye over our floor plan, you won't be disappointed!

With either two or three bedrooms along with two luxury bathrooms, there's also a lounge, utility, dining kitchen and conservatory. Outside to the rear is a lovely garden that enjoys plentiful peace & tranquility whilst the front driveway is more than ample for several vehicles.

As we as being an easy walk to stunning countryside, the bustling town centre is also an easy stroll away to us making this home a real delight!

Read on to find out more, view our video, photos and floor plan then call our friendly team here at Chris Hamriding Estate Agents to book yourself that all important viewing!

Canopy Porch

External Store

Entrance Hall

Bedroom 3/ Reception Room 18'11" x 8'1" (5.77 x 2.48)

WC

Store

First Floor Landing

Dining Kitchen 15'8" x 12'9" (4.79 x 3.90)

Conservatory 9'8" x 11'10" (2.97 x 3.61)

Lounge / Bedroom 3 15'9" x 11'1" (4.82 x 3.38)

Bathroom 7'4" x 6'0" (2.25 x 1.85)

Second Floor Landing

Bedroom 1 10'4" x 9'2" excludes wardrobe (3.16 x 2.81 excludes wardrobe)

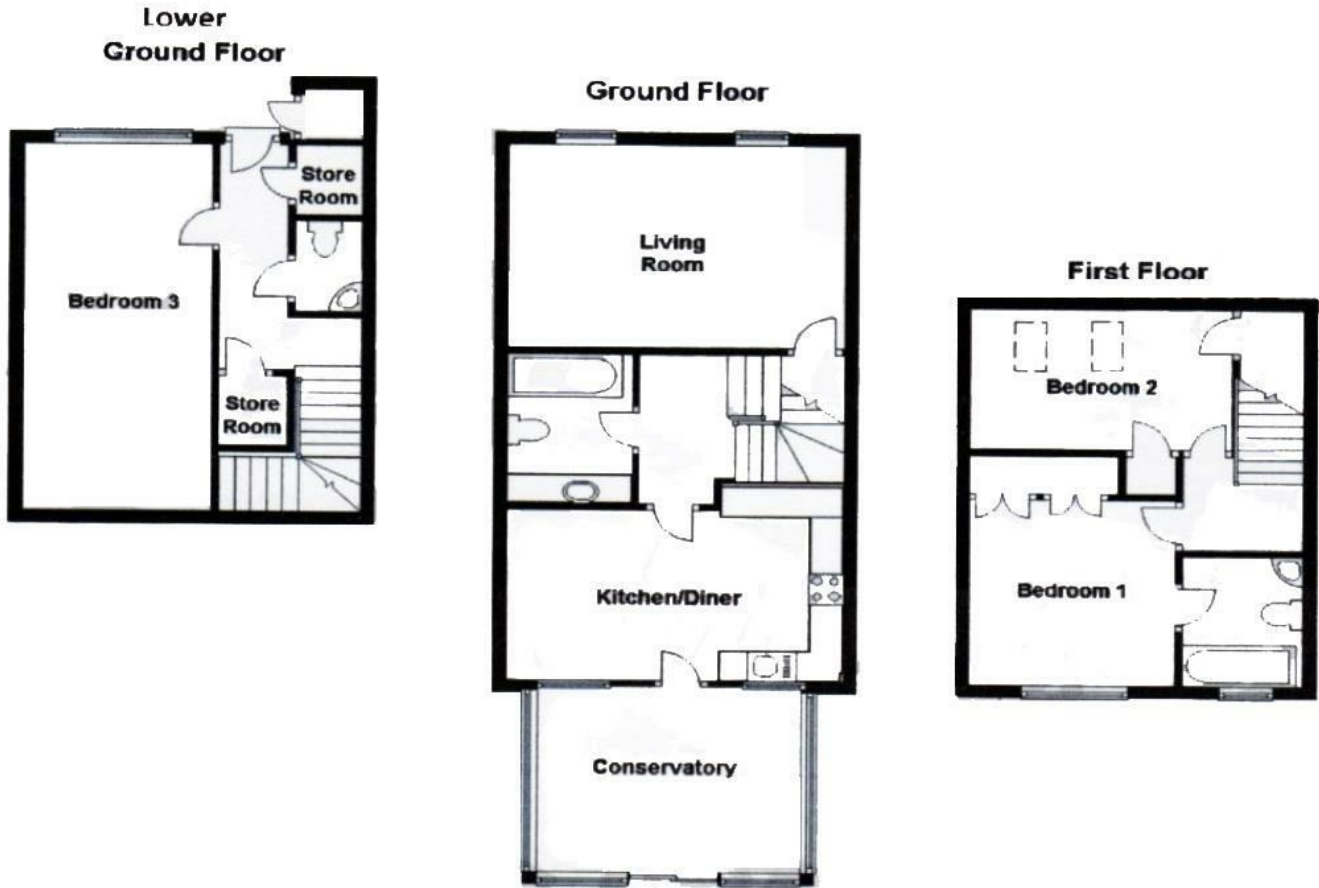
En Suite 6'11" x 6'2" (2.12 x 1.88)

Bedroom 2 12'6" x 10'5" (3.82 x 3.2)

Front Driveway

Rear Garden

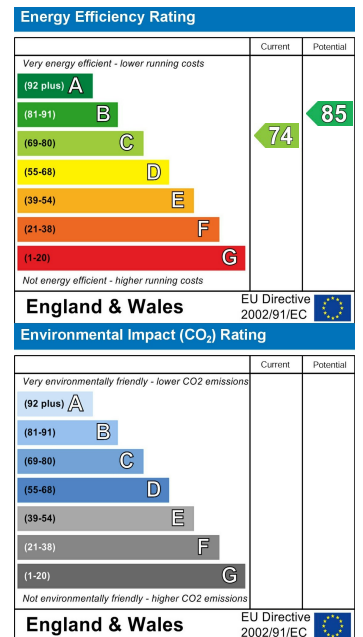
Floor Plan



Area Map



Energy Efficiency Graph



NOTICE Chris Hamriding Lettings & Estate Agents for themselves and for the vendor or lessors of this property whose agents they are given notice that: (i) the particulars are set out as a general outline only for the guidance of intending purchasers or lessees, and do not constitute, nor constitute part of, an offer of contract, (ii), all descriptions, dimensions, references to condition and necessary permissions for use and occupation, and other details are given in good faith and are believed to be correct but any intending purchasers or tenants should not rely on them as statement or representation of fact but must satisfy themselves by inspection or otherwise as to the correctness of each of them, (iii) no person in the employment of Chris Hamriding Lettings & Estate Agents has any authority to make or give any representation or warranty whatever in relation to this property.

