

# chrishamriding

lettings & estate agents



## 1 Westbourne Mews Sandy Lane, Congleton, CW12 4FH

Offers In The Region Of £100,000

Watch our guided video tour of this lovely ground floor retirement apartment!

Offered for sale with NO ONWARD CHAIN and situated conveniently for public transport, local amenities and the ever popular 'Astbury Mere Country Park', this ground floor retirement apartment for the over 60's offers all the features you need for retirement living in Congleton. Having well planned accommodation throughout comprising two double bedrooms, a pleasant lounge, tasteful kitchen and accessible bathroom all accessed from an inner hall with a deep store cupboard. The communal areas are also well kept both inside and out. From within the home you can admire mature views of the established and peaceful grounds thus making this an ideal spot to retire to after a day of relaxing in the local area!

Read on to find out more, view our video, photos and floor plan then call the Congleton property experts here at Chris Hamriding Estate Agents to book yourself that all important viewing!

## **Entrance hall**

**Lounge 13'1" x 11'4" (3.99 x 3.46)**

**Bedroom one 11'7" x 9'10" (3.54 x 3.02)**

**Bedroom two 9'4" x 8'3" (2.87 x 2.53 )**

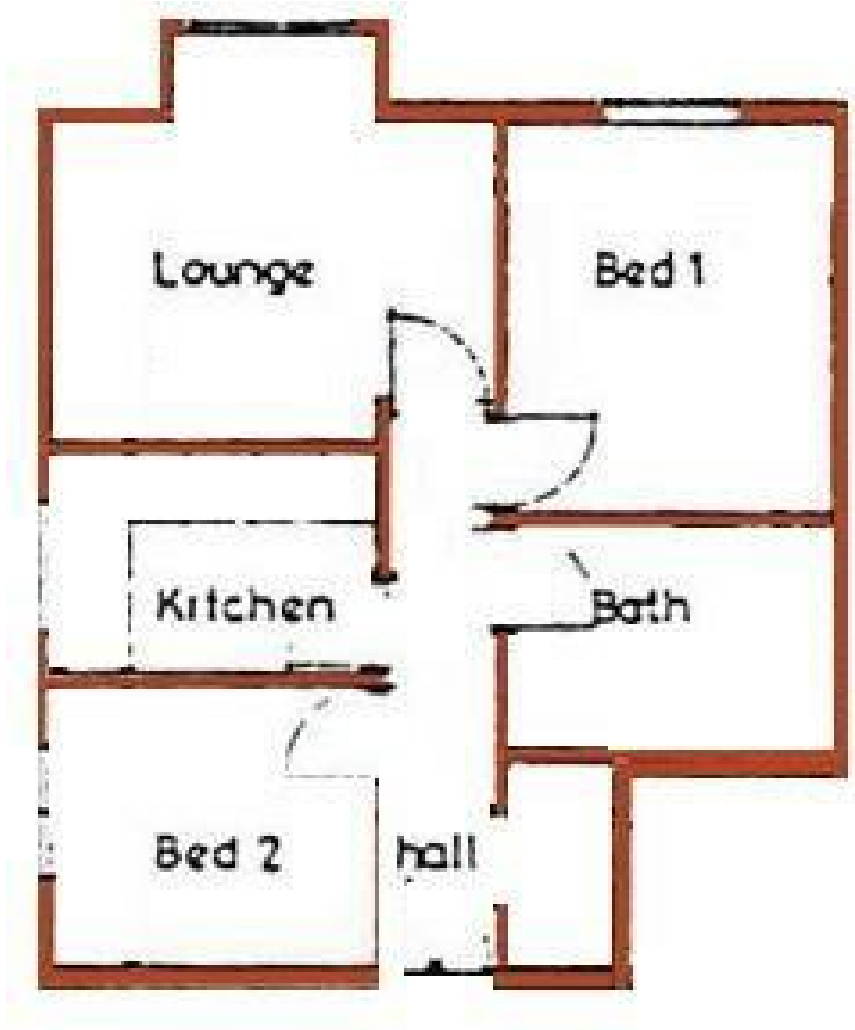
**Kitchen 9'10" x 6'8" (3.01 x 2.05)**

**Bathroom 9'11" x 6'7" (3.04 x 2.03)**

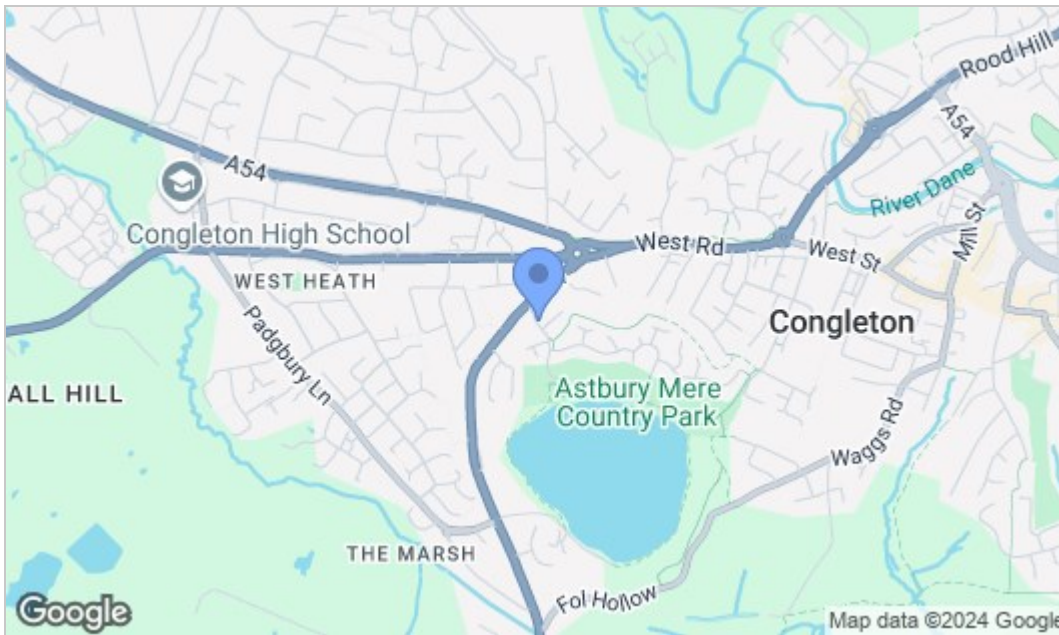
## **Outside**

**Communal entrance**

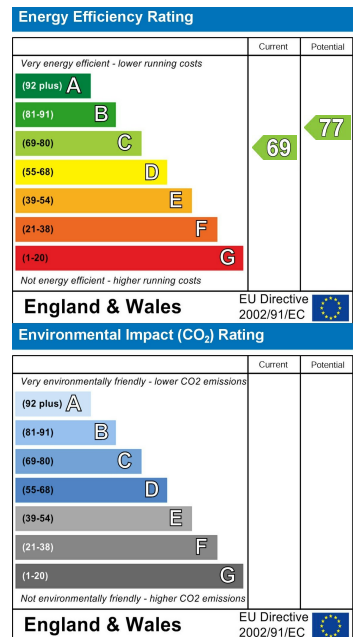
## Floor Plan



## Area Map



## Energy Efficiency Graph



NOTICE Chris Hamriding Lettings & Estate Agents for themselves and for the vendor or lessors of this property whose agents they are given notice that: (i) the particulars are set out as a general outline only for the guidance of intending purchasers or lessees, and do not constitute, nor constitute part of, an offer of contract, (ii), all descriptions, dimensions, references to condition and necessary permissions for use and occupation, and other details are given in good faith and are believed to be correct but any intending purchasers or tenants should not rely on them as statement or representation of fact but must satisfy themselves by inspection or otherwise as to the correctness of each of them, (iii) no person in the employment of Chris Hamriding Lettings & Estate Agents has any authority to make or give any representation or warranty whatever in relation to this property.

