



22 Burton Place, Oxford

Oxford

Guide Price **£435,000**



22 Burton Place

Oxford, OX4 2RQ

Nestled in a tranquil and discreet corner, this semi-detached house stands as a well-loved and extended family abode, boasting a legacy of cherished memories, this property exudes warmth and character.

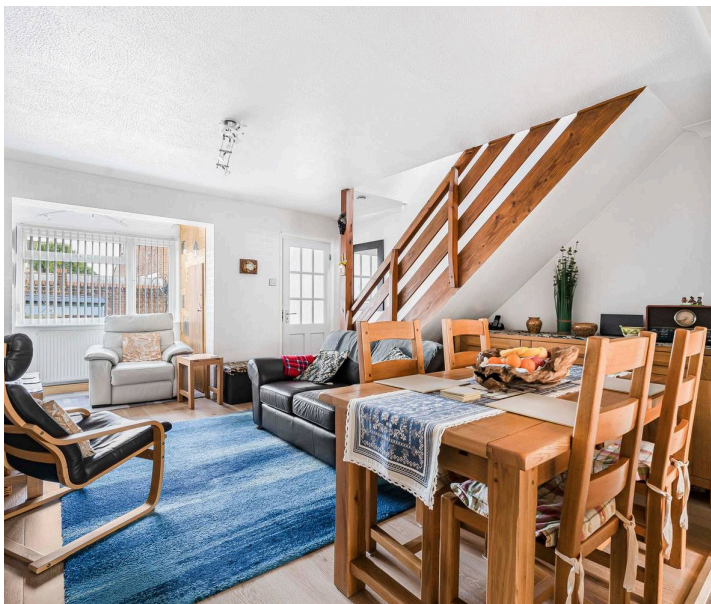
Upon entering, one is immediately struck by the thoughtful extension of the ground floor that caters to disabled living, a unique feature that sets this home apart, a third bedroom, utility room, and a convenient wet room. The heart of the home lies in the attractive and well-planned kitchen, which seamlessly flows into a year-round conservatory. Ascend to the first floor to discover two generously sized bedrooms and a modern bathroom.

The larger-than-average garden is a verdant oasis, dotted with extensive workshops that offer ample space for various projects and hobbies. The low-maintenance garden beckons with its paved pathways and a serene pond, gated side access leads to the front and at the bottom is a further length of garden, currently home to bee hives and an impressive workshop. The property features a detached single garage and ample private parking, with front parking accommodating up to three cars.

Impeccably presented and meticulously maintained, this home is a testament to the pride of ownership that has been passed down through generations. With an onward chain already in place, this property presents a great opportunity to own a unique much loved home.

EPC Rating: C

- A much loved and extended family home
- Tucked away in a quiet discreet corner
- Ground floor extended to enable disabled living





Approximate Gross Internal Area 1431 sq ft - 133 sq m

Ground Floor Area 767 sq ft – 71 sq m

First Floor Area 315 sq ft – 29 sq m

Garage Area 139 sq ft – 13 sq m

Outbuilding Area 210 sq ft – 20 sq m

