



Grisedale Crescent Middlesbrough, TS6 7QN

| Wow - Must Be Viewed! A Completely Refurbished & Extensively Upgraded Family Home That Briefly Benefits From; Two Reception Rooms, Modern High Gloss Kitchen, Luxury Bath/Shower Room With Free Standing Bath & Separate Shower Unit, Converted Loft Room, Separate Aluminium/Insulated Annex To Rear Providing An Extra Bedroom Or Multi-Use Room/Shower WC & Utility Room, Private Landscaped Garden With Artificial Grass & Summer House & A Large Gated Block Paved Driveway | Updated Wiring, PVC Double Glazed Windows & Doors | Security Alarm System | Modern Decor Throughout | Luxury Fitted Carpets & Flooring | Viewings & Offers Welcome |

Two Separate Reception Rooms With A Modern Open Plan Dining Kitchen

Fully Converted Loft Room With Pull Down Ladder

Large Gated Driveway Provides Ample Off

Luxury Bathroom Suite With Roll Top Bath & Walk In Shower Unit

Private Landscaped Rear Garden

Viewings Welcomed / Offers Invited On The Asking Price

£110,000

Grisedale Crescent Middlesbrough, TS6 7QN

ENTRANCE HALL 11' 9" x 6' 2" (3.58m x 1.88m)

PVC double glazed multi-locking external door, central heated radiator with timber cover, security alarm system, timber flooring, stairs to first floor with cupboard under, timber glazed doors to living room and to kitchen.

LIVING ROOM 12' 11" x 12' 5" (3.93m x 3.78m)

With a PVC double glazed bow window, fitted venetian blinds, timber flooring and living flame gas fire inset to a timber surround and marble hearth.

DINING KITCHEN 10' 6" x 19' 0" (3.20m x 5.79m)

Narrowing To 9' Into Dining Area

An ultra-modern range of high gloss cream fitted kitchen units and drawers, square top work surfaces, tiled splash backs, four ring gas hob electric oven and grill, one half sink and drainer with mixer tap, concealed washing machine, timber flooring, PVC double glazed window and multi-locking external door to the rear/side gardens, leading into the dining area with French doors leading to the rear garden, timber flooring and central heated radiator with timber cover.

FIRST FLOOR LANDING

Stairs and landing with luxury fitted carpet, PVC double glazed window with fitted venetian blinds, loft access hatch with pull down ladder to converted loft room, doors to three bedrooms and to bathroom.

BEDROOM ONE 12' 4" x 9' 7" (3.76m x 2.92m)

A double bedroom with PVC double glazed window, fitted venetian blinds, central heated radiator and sliding mirrored wardrobes and storage cupboard.

BEDROOM TWO 8' 9" x 9' 2" (2.66m x 2.79m)

A second double bedroom with PVC double glazed window, fitted venetian blinds, central heated radiator and storage cupboard.

BEDROOM THREE 7' 8" x 9' 1" (2.34m x 2.77m)

A generous third bedroom with PVC double glazed window, fitted venetian blinds, central heated radiator and above stairs storage cupboard.

BATH/SHOWER ROOM 5' 4" x 9' 4" (1.62m x 2.84m)

An extensive suite comprising free standing roll top bath, walk in glass shower unit with rainfall shower and hand attachment, hand wash basin, dual flush WC, chrome ladder radiator, tiled walls, cladded ceiling with spotlights, two PVC double glazed windows with fitted roller blinds.

LOFT ROOM 10' 0" x 19' 0" (3.05m x 5.79m)

A fully converted loft room, used as an additional bedroom, with three Velux roof windows with roller black out blinds, central heated radiator, laminated timber flooring, eaves storage and cupboards.

EXTERNALLY

ANNEX

An aluminium/insulated annex with utility room and bedroom/ensuite shower room/WC

UTILITY ROOM

Accessed via the rear garden, with space and plumbing for an automatic washing and tumble dryer, multi-locking external door and double glazed window.

BEDROOM 8' 6" x 11' 7" (2.59m x 3.53m)

A bedroom with PVC double glazed window, fitted wardrobes, multi-locking external door and door to ensuite shower room.

ENSUITE SHOWER WC 8' 0" x 3' 10" (2.44m x 1.17m)

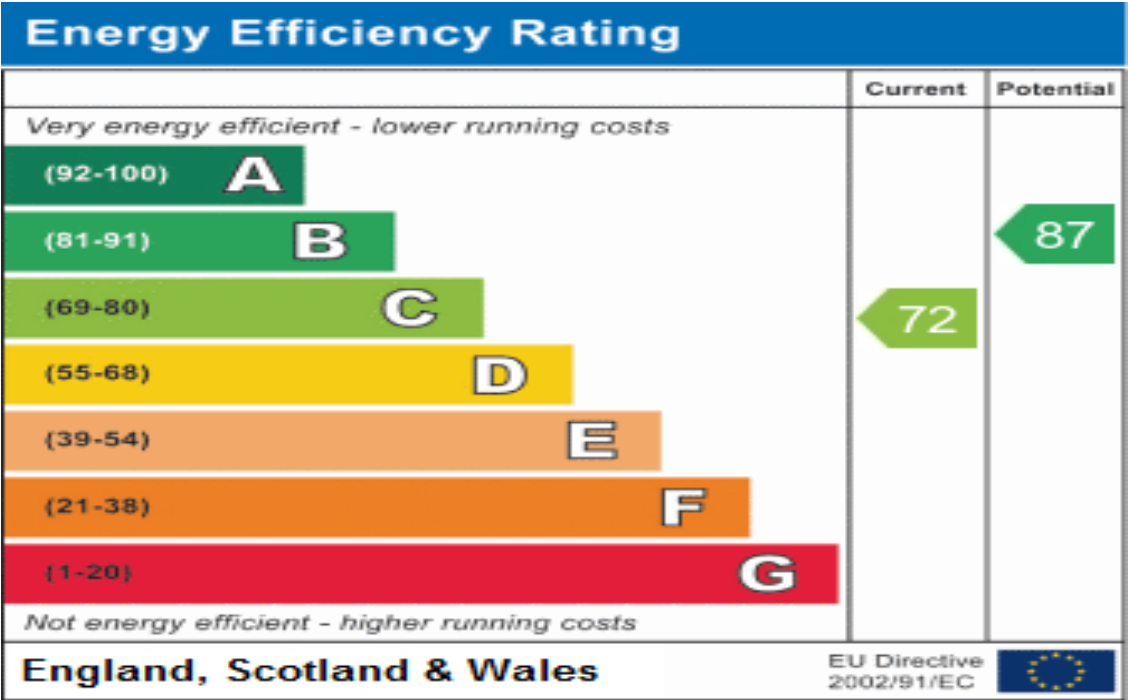
With walk in corner shower unit, hand wash basin, WC and window.

DRIVEWAY

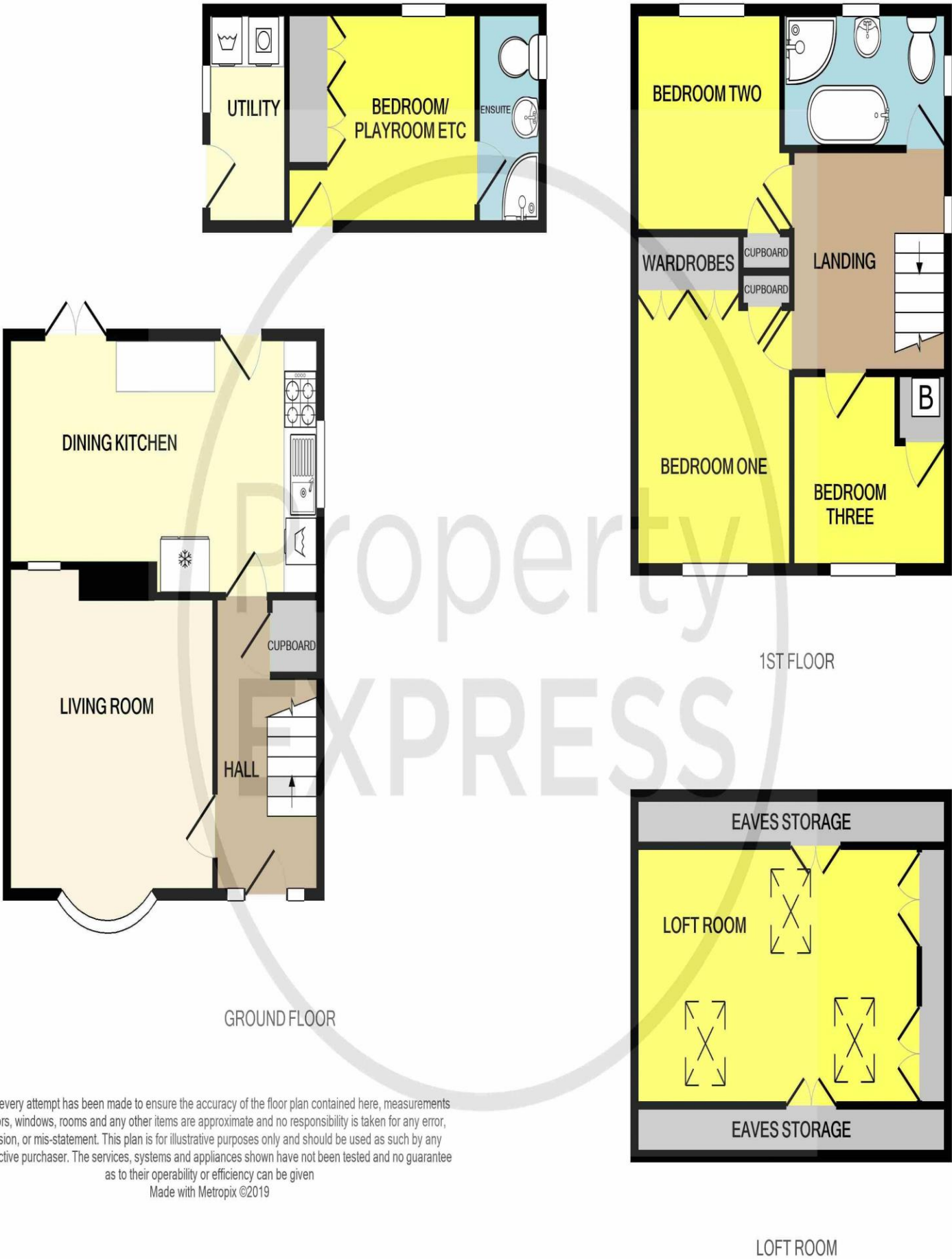
An extensive block paved gated driveway to front and side, with gate to rear garden and electric vehicle charging point.



Grisedale Crescent Middlesbrough, TS6 7QN



Grisedale Crescent Middlesbrough, TS6 7QN



Whilst every attempt has been made to ensure the accuracy of the floor plan contained here, measurements of doors, windows, rooms and any other items are approximate and no responsibility is taken for any error, omission, or mis-statement. This plan is for illustrative purposes only and should be used as such by any prospective purchaser. The services, systems and appliances shown have not been tested and no guarantee as to their operability or efficiency can be given
Made with Metropix ©2019