



[www.kings-group.net](http://www.kings-group.net)

488 Bethnal Green Road  
London E2 0EA  
Tel: 0207 613 2121

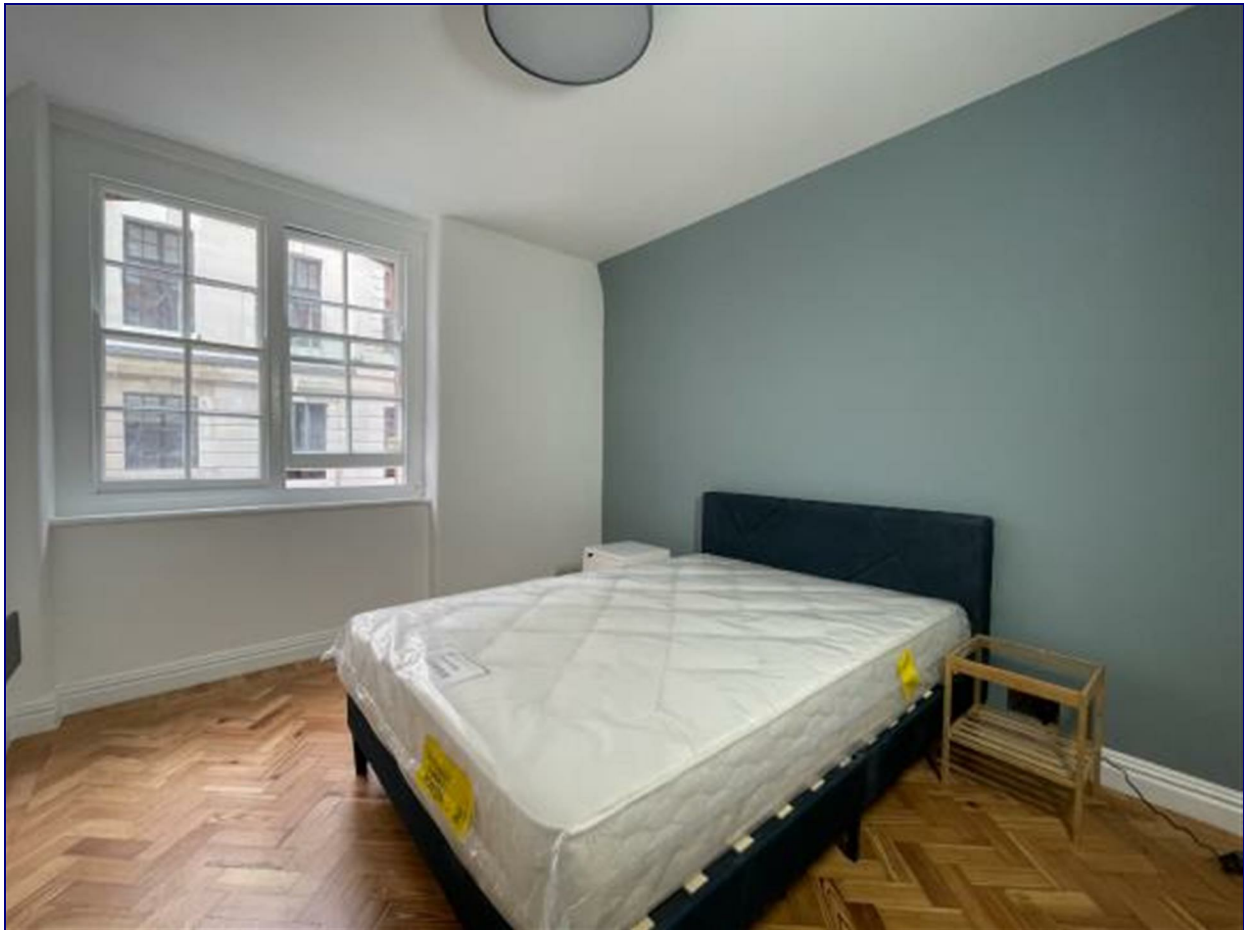
**Bidborough Street, London, WC1H 9DL**




**£2,500 Per Month**

A one bedroom home located on the fourth floor of Queen Alexandra Mansions, the property has a separate living room which could be used as a bedroom, a communal roof terrace and no onward chain.

Queen Alexandra Mansions is a period mansion block located between King's Cross and Bloomsbury. It provides excellent access to transport, London's universities and the West End.



Energy Efficiency Rating		
	Current	Potential
Very energy efficient - lower running costs		
(92 plus) A		
(81-91) B		
(69-80) C		
(55-68) D		
(39-54) E		
(21-38) F		
(1-20) G		
Not energy efficient - higher running costs		
England & Wales	EU Directive 2002/91/EC	

Environmental Impact (CO <sub>2</sub> ) Rating		
	Current	Potential
Very environmentally friendly - lower CO <sub>2</sub> emissions		
(92 plus) A		
(81-91) B		
(69-80) C		
(55-68) D		
(39-54) E		
(21-38) F		
(1-20) G		
Not environmentally friendly - higher CO <sub>2</sub> emissions		
England & Wales	EU Directive 2002/91/EC	

