



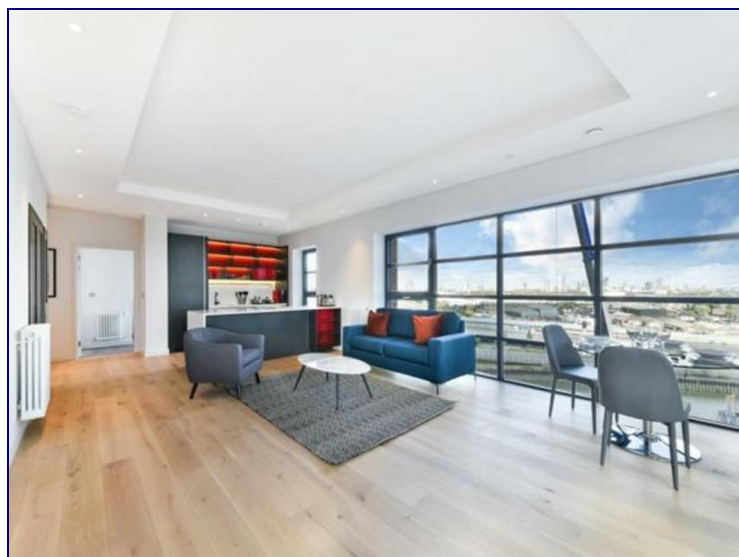
www.kings-group.net

488 Bethnal Green Road

London E2 0EA

Tel: 0207 613 2121

19 Lyell Street, London, E14 0RQ

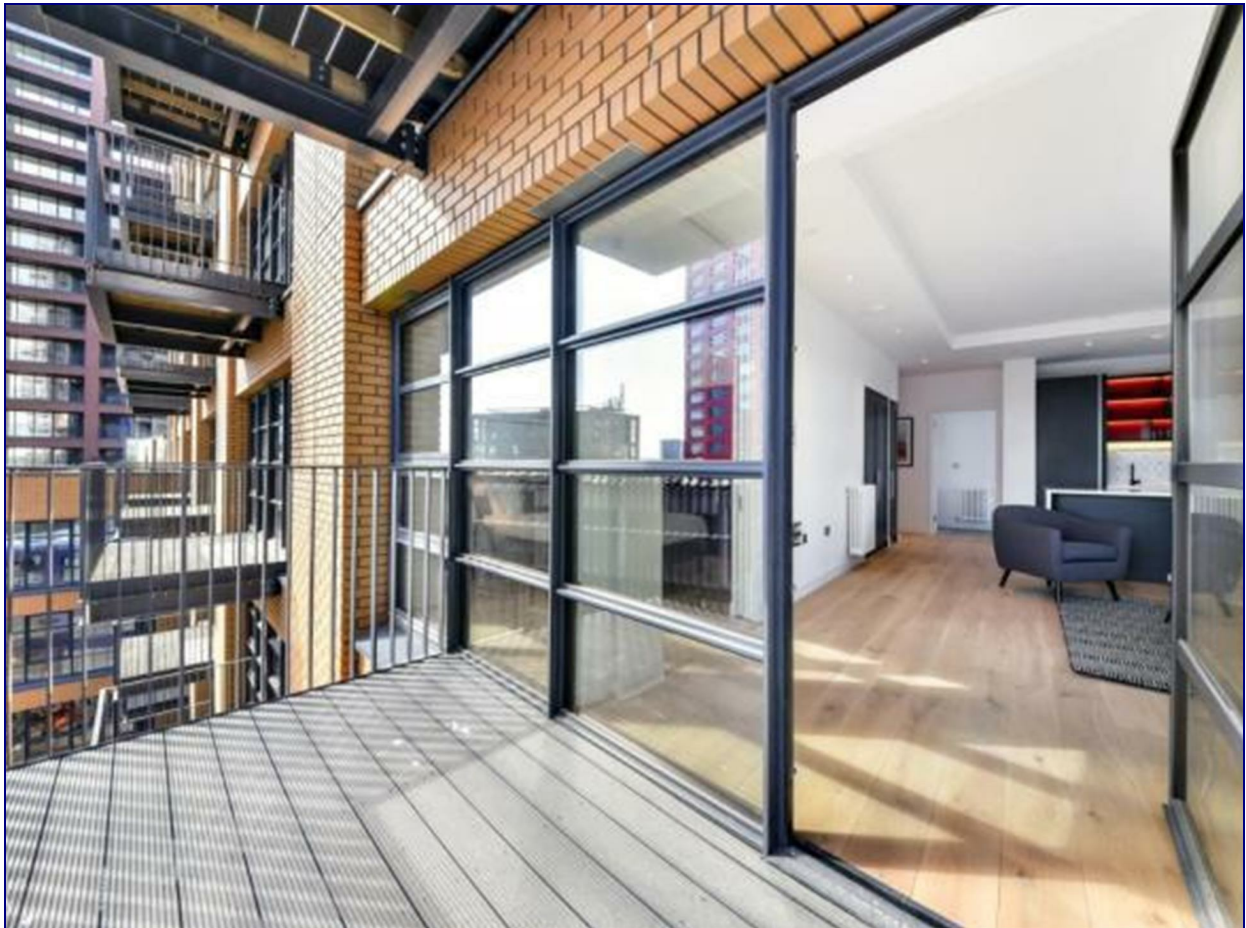



£2,750 Per Month

**** VIDEO VIEWING AVAILABLE**** A large two double bedroom apartment available to rent situated on the 3RD floor of a unique new waterside development, London City Island, Docklands E14. Arranged over 894 sq ft and with a south-easterly aspect, accommodation comprises reception room, open-plan to kitchen, master bedroom with en-suite, a further double bedroom, master bathroom and balcony. Secure car park space available for separate negotiation.

Residents of City Island will benefit from a 24 hour concierge, spectacular private leisure club with gymnasium, heated outdoor swimming pool and hydro pool, steam room, sauna and spa, private residents lounge, the grocer, cafe/restaurant and stunning landscaping.

Excellent transport links in to London via Canning Town station.



Energy Efficiency Rating		
	Current	Potential
Very energy efficient - lower running costs		
(92 plus) A		
(81-91) B		
(69-80) C		
(55-68) D		
(39-54) E		
(21-38) F		
(1-20) G		
Not energy efficient - higher running costs		
England & Wales	EU Directive 2002/91/EC	

Environmental Impact (CO ₂) Rating		
	Current	Potential
Very environmentally friendly - lower CO ₂ emissions		
(92 plus) A		
(81-91) B		
(69-80) C		
(55-68) D		
(39-54) E		
(21-38) F		
(1-20) G		
Not environmentally friendly - higher CO ₂ emissions		
England & Wales	EU Directive 2002/91/EC	