

Rochford Walk, Blackstone Estate, London, E8 3HG



£3,000

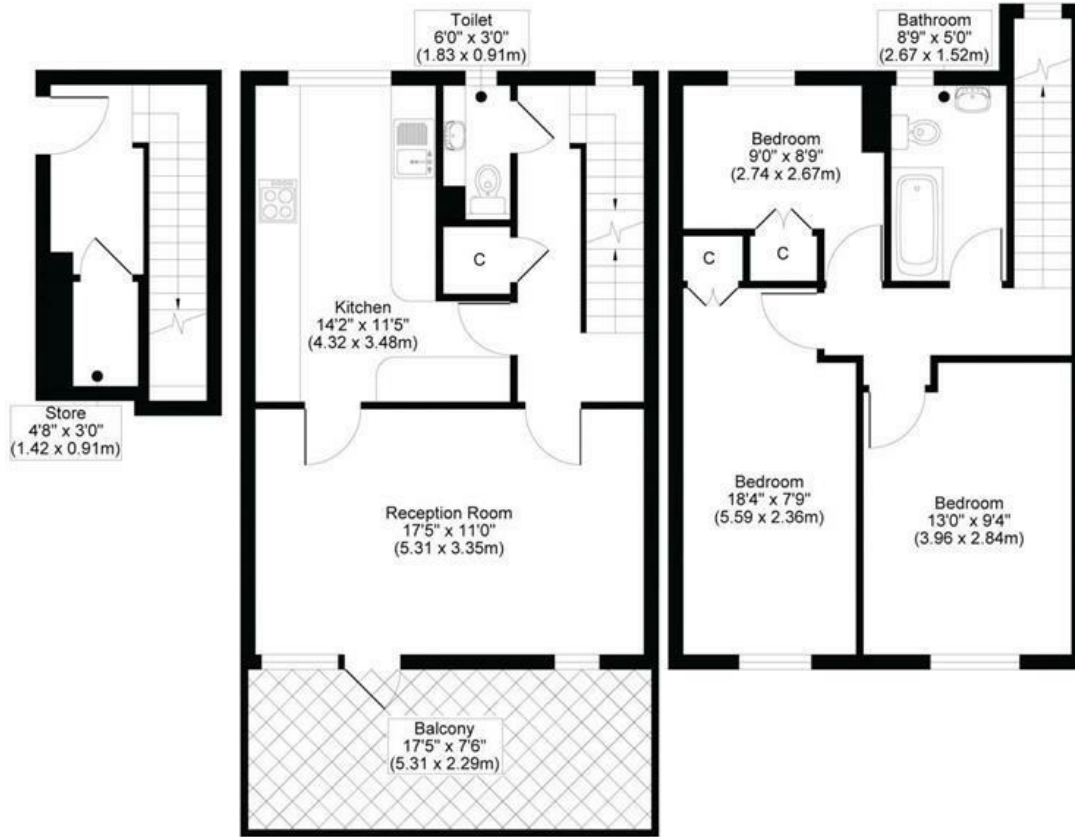
Located moments from London Fields Park and Broadway Market, opening up its beautiful green space and a wonderful plethora of bars, shops, restaurants and art studios, comes this wonderful three bedroom maisonette with private balcony, close to London Fields Station and the all weather Lido. The property is bright and airy throughout and comprises a large reception room with access to the private balcony, a modern, fully fitted kitchen, three bedrooms, a family bathroom and a further cloakroom on the ground floor.

Rochford Walk as mentioned is extremely close to London Fields Park opening up its refreshing green space and all year heated Lido, whilst Broadway Market is close by offering its range of Trendy Bars and Restaurants, along with its many Art Studios and of course the Saturday Farmers Market. London Fields Station (London Overground) is close by and will take you into Liverpool Street in under ten minutes



ROCHFORD WALK E8

TOTAL APPROX FLOOR PLAN AREA 992 SQ.FT (92 SQ.M)



GROUND FLOOR

FIRST FLOOR

SECOND FLOOR

All measurements, walls, doors, windows, fittings and their appliances, their size and locations are shown conventionally and are approximate only and cannot be regarded as being a representation either by the seller or his agent.



Energy Efficiency Rating		
	Current	Potential
Very energy efficient - lower running costs		
(92 plus) A		
(81-91) B		
(69-80) C		
(55-68) D		
(39-54) E		
(21-38) F		
(1-20) G		
Not energy efficient - higher running costs		
England & Wales	EU Directive 2002/91/EC	

Environmental Impact (CO ₂) Rating		
	Current	Potential
Very environmentally friendly - lower CO ₂ emissions		
(92 plus) A		
(81-91) B		
(69-80) C		
(55-68) D		
(39-54) E		
(21-38) F		
(1-20) G		
Not environmentally friendly - higher CO ₂ emissions		
England & Wales	EU Directive 2002/91/EC	



Associated Offices in London, Essex and Hertfordshire
Kings Head Office Tudor Lodge, Burton Lane, Goffs Oak, Hertfordshire EN7 6SY Tel: 01707-872000

