

Whiston Road, London, E2 8RY

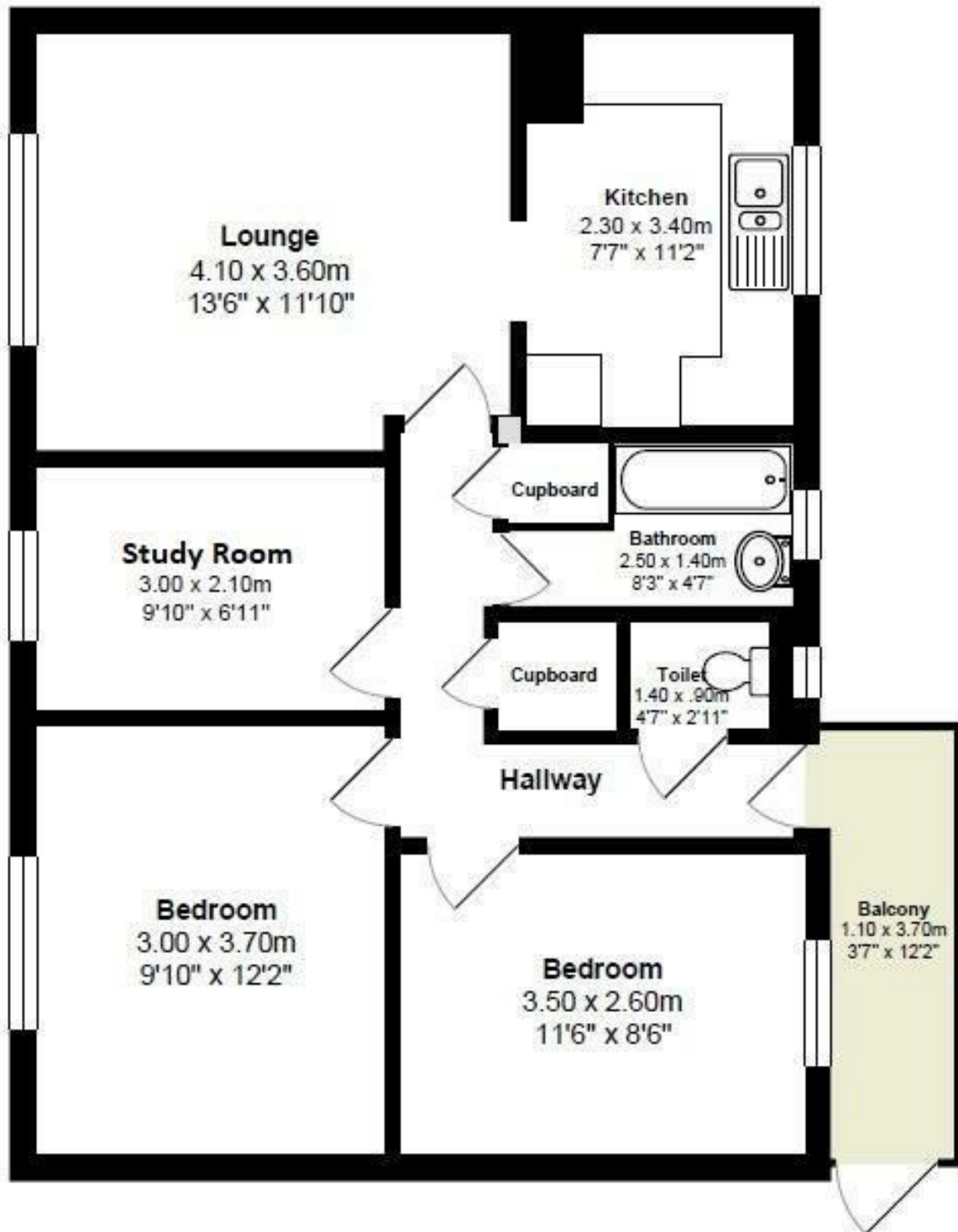


£2,250 Per Month

***** NEWLY REFURBISHED 2 BED + STUDY FLAT***** This fantastic property comprises of a, separate kitchen, TWO LARGE DOUBLE BEDROOMS. LARGE LOUNGE, SEPARATE WC, FULLY FURNISHED. BALCONY OUTDOOR SPACE. Conveniently situated within a MINUTES WALK to Bethnal Green STATION (Central line and overground) 10 MINUTE walk to trendy Shoreditch and Brick Lane BOOK A VIEWING NOW TO AVOID DISAPPOINTMENT!

Suitable for a family or professional sharers, up to max (couple & third person).





Energy Efficiency Rating		
	Current	Potential
Very energy efficient - lower running costs		
(92 plus) A		
(81-91) B		
(69-80) C		
(55-68) D		
(39-54) E		
(21-38) F		
(1-20) G		
Not energy efficient - higher running costs		
England & Wales	EU Directive 2002/91/EC	81

Environmental Impact (CO ₂) Rating		
	Current	Potential
Very environmentally friendly - lower CO ₂ emissions		
(92 plus) A		
(81-91) B		
(69-80) C		
(55-68) D		
(39-54) E		
(21-38) F		
(1-20) G		
Not environmentally friendly - higher CO ₂ emissions		
England & Wales	EU Directive 2002/91/EC	

