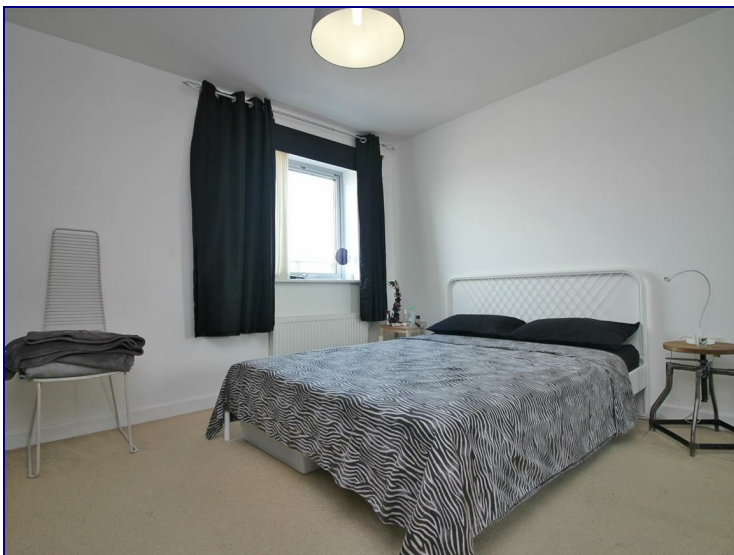



Merchant Street, London, E3 4PZ



£1,750 Per Month

****STUNNING ONE BED FLAT **** This modern two bedroom flat is situated in a **SECURE GATED DEVELOPMENT** in the heart of Bow. The property benefits of a very **LARGE DOUBLE BEDROOMS**, huge open plan kitchen/lounge with modern appliances, sofa and dining table, a contemporary bathroom and a **BALCONY**. The development offers allocated parking space and bike storage and it's close to **MILE END & Bow Church DLR Stn**, **Bow Road Stn**, many bus stops (25, 205, 277,8, 339, D8) and it's also very close to **Roman Road Market** and **Victoria Park**.



Energy Efficiency Rating		
	Current	Potential
<i>Very energy efficient - lower running costs</i>		
(92 plus) A		
(81-91) B		
(69-80) C		
(55-68) D		
(39-54) E		
(21-38) F		
(1-20) G		
<i>Not energy efficient - higher running costs</i>		
England & Wales	EU Directive 2002/91/EC	

Environmental Impact (CO ₂) Rating		
	Current	Potential
<i>Very environmentally friendly - lower CO₂ emissions</i>		
(92 plus) A		
(81-91) B		
(69-80) C		
(55-68) D		
(39-54) E		
(21-38) F		
(1-20) G		
<i>Not environmentally friendly - higher CO₂ emissions</i>		
England & Wales	EU Directive 2002/91/EC	