

Old Church Road, London, E1 0QB



£1,350 Per Month

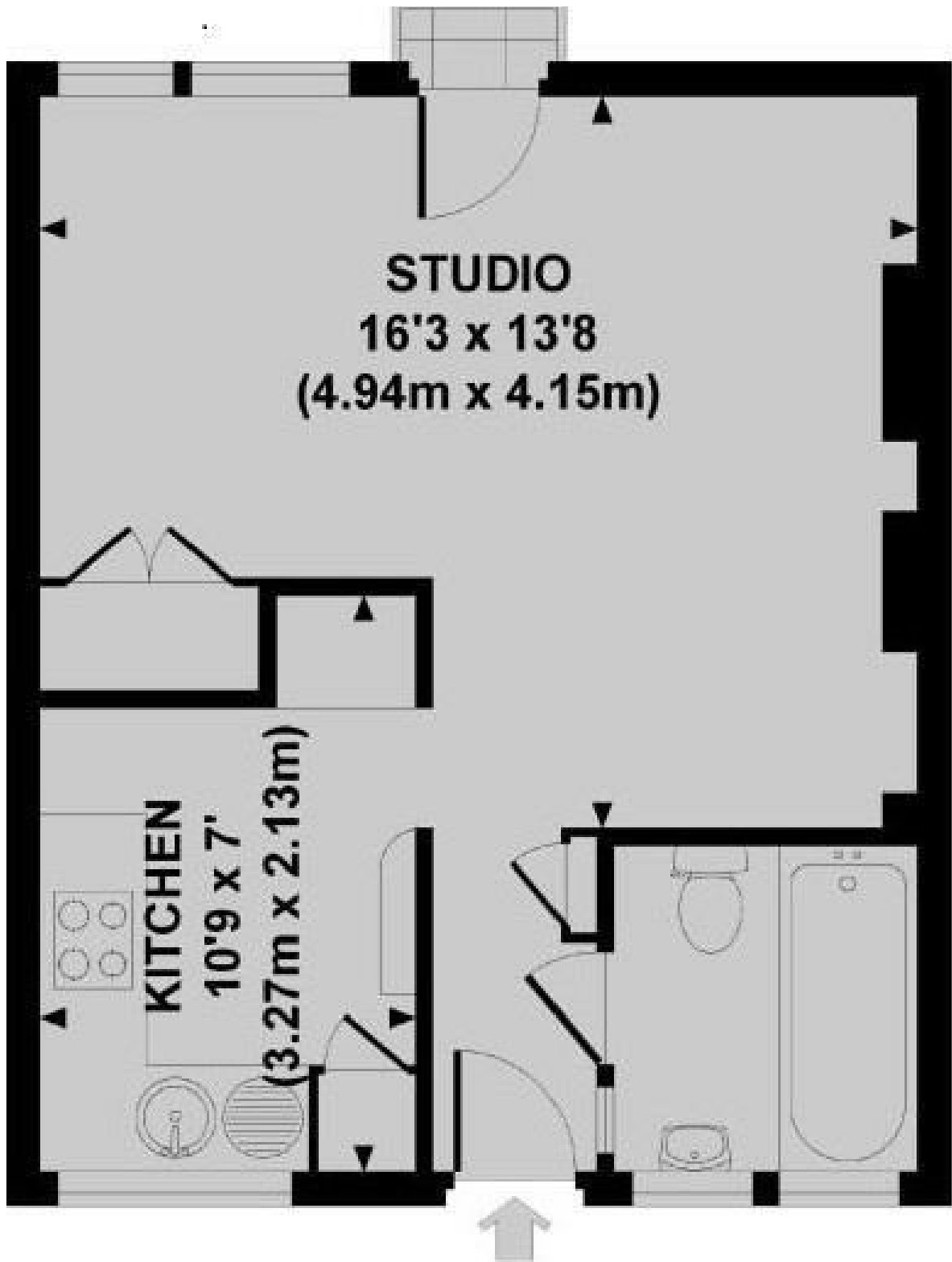
A beautifully presented FURNISHED, spacious and thoughtfully arranged property. This lovely property comprises reception room, fully fitted kitchen, a spacious bedroom and a three piece bathroom suite.

The property retains many original features with high ceilings and ample storage cupboards.

Short walking distance to Stepney Green Station. Conveniently situated within a Minutes WALK to LIMEHOUSE ((DLR) , WHITECHAPEL STATION (DISTRICT LINE) and Easy Access to the CITY.

Viewings are highly recommended;





Energy Efficiency Rating		Current	Potential
Very energy efficient - lower running costs			
(92 plus) A			
(81-91) B			
(69-80) C			
(55-68) D			
(39-54) E			
(21-38) F			
(1-20) G			
Not energy efficient - higher running costs			
England & Wales		EU Directive 2002/91/EC	

Environmental Impact (CO ₂) Rating		Current	Potential
Very environmentally friendly - lower CO ₂ emissions			
(92 plus) A			
(81-91) B			
(69-80) C			
(55-68) D			
(39-54) E			
(21-38) F			
(1-20) G			
Not environmentally friendly - higher CO ₂ emissions			
England & Wales		EU Directive 2002/91/EC	

