



52 Lickley Street
Ripon, HG4 1LJ
Guide price £190,000



WITHIN WALKING DISTANCE TO THE CITY OF RIPON
A TWO BEDROOMS AND USEFUL LOFT ROOM MID TERRACED PROPERTY
WITH TWO RECEPTION ROOMS ONE WITH LOG BURNER
GALLEY FITTED KITCHEN
GROUND FLOOR SHOWER ROOM
REAR PAVED SITTING AREA REAR SINGLE GARAGE
DOUBLE GLAZED AND CENTRALLY HEATED EPC D COUNCIL TAX BAND B



Description

Welcome to Lickley Street, Ripon - a charming location that could be the perfect setting for your new home! This delightful terraced house boasts a characterful older style, offering a unique blend of traditional charm and modern comfort.

As you step inside, you are greeted by not just one, but two inviting reception rooms, providing ample space for entertaining guests or simply relaxing with your loved ones. The property features two cosy bedrooms and useful loft space ideal for creating your own personal sanctuary to unwind after a long day.

With a well-appointed shower room to cater to your daily needs, this property ensures both convenience and functionality. The older style of the house adds a touch of character and history, making it a truly special place to call home.

Located in the heart of Ripon, this property offers easy access to local amenities, schools, and transport links, making it a practical choice for families, professionals, or anyone looking to enjoy the best of what this vibrant City has to offer.

Don't miss out on the opportunity to make this charming terraced house on Lickley Street your own - a place where you can create lasting memories and truly feel at home. Contact us today to arrange a viewing and take the first step towards making this property your own slice of British charm!

Location

The property occupies a handy location close to the city centre, with Ripon's array of amenities close by, plus the bus station, including access to the 36 bus route. Located on a very popular street, there are three supermarkets within walking distance, whilst the Ripon bypass is also only moments away. located just to the east of the historic centre of Ripon, within sight of the famous cathedral. Ripon's high-street and supermarket shopping, services and entertainments are all within a short walk. There are several nurseries and primary schools within half a mile, and the very highly regarded Ripon Grammar School is a mile away.

Directions

From Ripon Market Square follow Fishergate, which

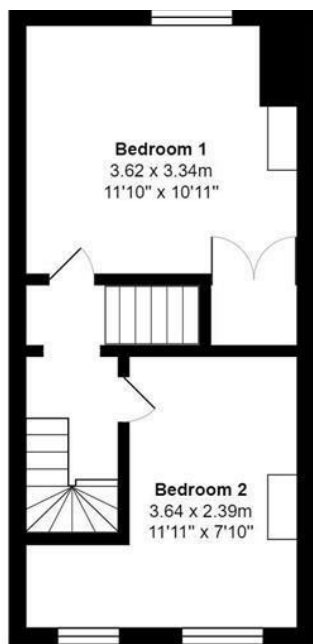
becomes North Street. Turn right onto Allhallowgate, and at the lights at the bottom continue straight ahead onto Priest Gate. Lickley Street is on your left,



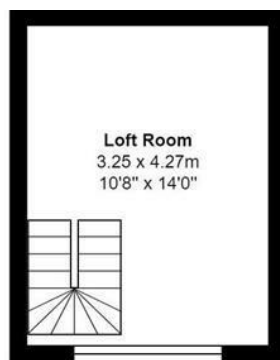




Ground Floor

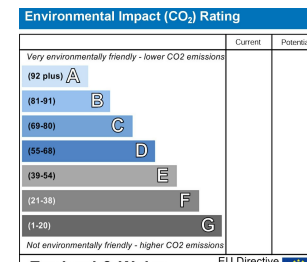
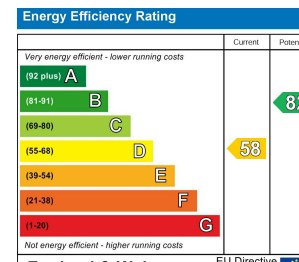


First Floor



Second Floor

Total Area: 90.6 m² 975 ft²



Craven-Holmes Estate Agents. 32 High Street, Boroughbridge, York, North Yorkshire, YO51 9AW

t: 01423 329010 e: lettings@craven-holmes.co.uk | sales@craven-holmes.co.uk

www.craven-holmes.co.uk