

FOLKLANDS



HARRY CLOSE, WEST CROYDON

MONTHLY RENTAL OF £1,300

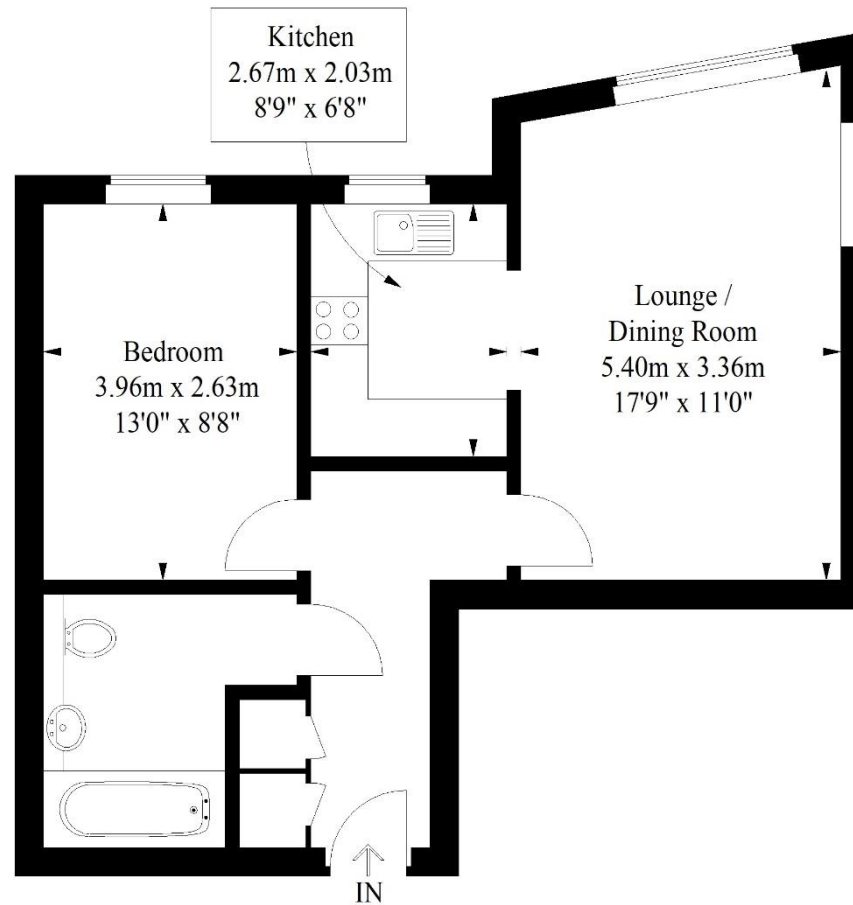




NO 1 - 42
CALLISTO COURT
1 HARRY CLOSE

Callender Court, Harry Close, Croydon

Approximate Gross Internal Area
48.4 sq m / 521 sq ft



First Floor

Illustration for identification purposes only,
measurements are approximate, not to scale.
FloorplansUsketch.com © 2019 (ID 610082)

INFO@FOLKLANDS.COM - 020 8686 0002

362 BRIGHTON ROAD - SOUTH CROYDON - CR2 6AL

- ❖ AVAILABLE 8TH JUNE 2025
- ❖ UNFURNISHED
- ❖ ONE DOUBLE BEDROOM APARTMENT
- ❖ FIRST FLOOR
- ❖ RESIDENTS OFF ROAD PARKING
- ❖ 0.8 MILES FROM WEST CROYDON TRAIN STATION
- ❖ 0.6 MILES FROM THORNTON HEATH TRAIN STATION
- ❖ MODERN DEVELOPMENT
- ❖ AMPLE STORAGE SPACE
- ❖ EPC EER B



**** Available 8th June 2025 ** Unfurnished **** A one double bedroom first floor apartment situated within this popular modern development, conveniently located only 0.6 miles from Thornton Heath train station & 0.8 miles from West Croydon train station.

This light & airy apartment is offered as unfurnished, it benefits from gas central heating, has a parking permit for the residents parking, and there is ample fitted storage within the property.

The accommodation comprises one double bedroom with a free-standing wardrobe, a modern three-piece bathroom suite, two sizeable hallway cupboards, a fitted kitchen and a spacious lounge/dining room.

Furthermore, this property sits within close proximity of a wide range of local shops & facilities and is within walking distance of Croydon town centre.

