



## Price

£1,400 PCM

Fees Apply



Available 20/12/25

Fulbert Road  
Dover CT16

*Wards*  
Helping you move forwards



## Main Features

- 3 bedroom terrace house
- Off road parking for 2 cars
- Private rear garden
- Alternative deposit option available
- Open house event
- Video tour available



**Deposit required is £1,615.38**  
**Dover District - Council Tax Band Tax Band B**

Renting a property is a big commitment and we recommend that you visit the local authority website and these websites which offer helpful information and advice about letting

[www.gov.uk/government/publications/how-to-rent](http://www.gov.uk/government/publications/how-to-rent)

[www.gov.uk/private-renting](http://www.gov.uk/private-renting)

[www.wardsofkent.co.uk/letting/our-tenancy-fees/](http://www.wardsofkent.co.uk/letting/our-tenancy-fees/)

[www.gov.uk/green-deal-energy-saving-measures](http://www.gov.uk/green-deal-energy-saving-measures)

**Call Dover 01304 201109 ■ [wardsofkent.co.uk](http://wardsofkent.co.uk)**

IMPORTANT INFORMATION: Please note that administration fees are charged in addition to the rent and security deposit. Please contact our Lettings Team who will confirm the total costs involved in renting this property. For clarification, we wish to inform the prospective tenant that we have prepared these details as a general guide. The agent has not carried out a detailed survey nor tested the services, appliances, or specific fittings (unless otherwise stated), and no warranty can be given as to their condition. All room measurements are taken at floor level. We strongly recommend that all the information which we provide about the property is verified by yourself and your advisers. The contents of this publication are © Wards, 2015. Wards is a trading name of Arun Estates Limited Registered in England No. 2597969

## Accommodation

### GROUND FLOOR

Entrance Hall

Lounge: 4.71m x 3.29m 15'5" x 10'9"

Kitchen / Dining Room: 3.05m x 5.20m 10' x 17'1"

### FIRST FLOOR

Landing

Bathroom: 1.69m x 2.40m 5'7" x 7'11"

Bedroom 2: 3.50m x 2.70m 11'6" x 8'10"

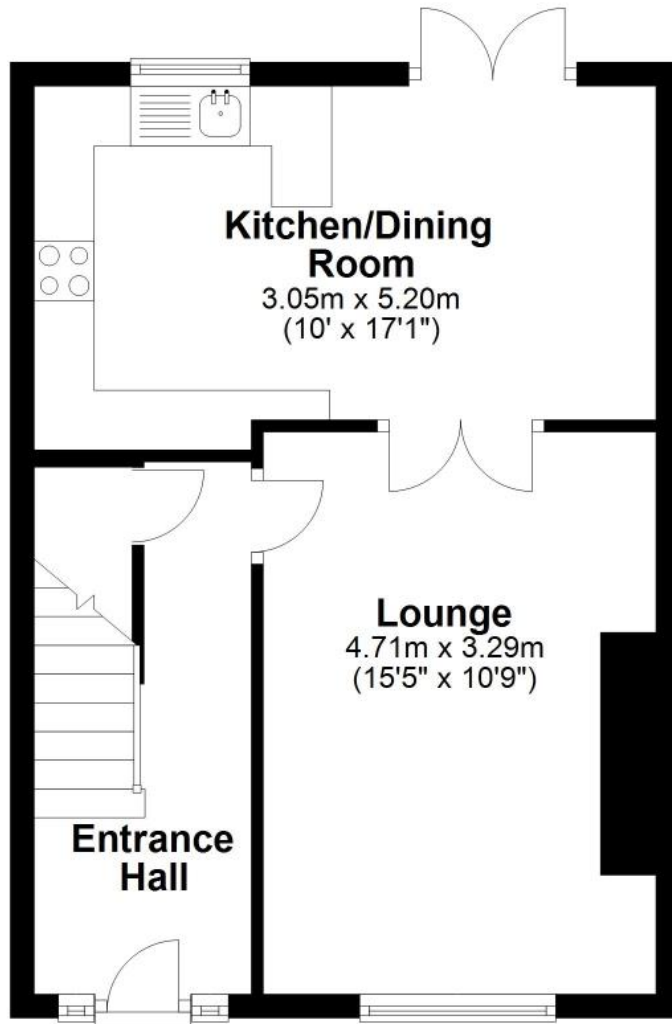
Bedroom 1: 4.00m x 3.08m 13'2" x 10'1"

Bedroom 3: 3.07m x 2.06m 10'1" x 6'9"



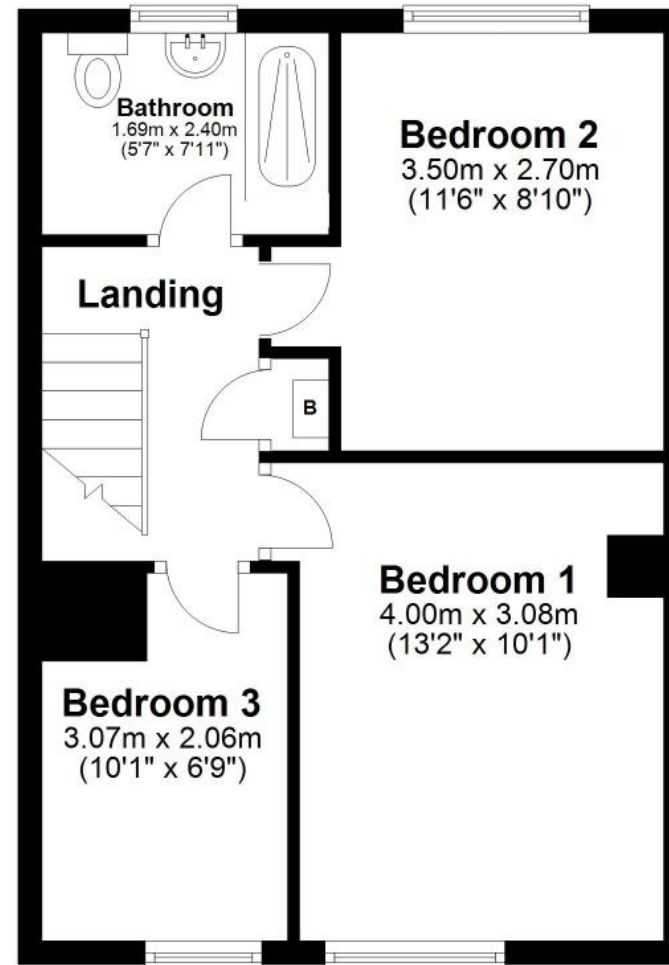
## Ground Floor

Approx. 39.6 sq. metres (425.8 sq. feet)



## First Floor

Approx. 39.6 sq. metres (426.7 sq. feet)



Total area: approx. 79.2 sq. metres (852.5 sq. feet)