



Price

£725 PCM

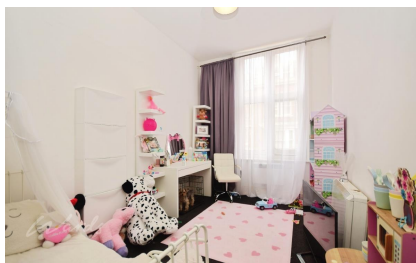
Fees Apply



Available 30/06/25

Cannon Street  
Dover CT16

*Wards*  
Helping you move forwards



## Main Features

1 bedroom first floor apartment

Central Dover

Modern throughout

No deposit option considered

Video tour available

Open house event



**Deposit required is £836.54**  
Dover District - Council Tax Band Tax Band A

Renting a property is a big commitment and we recommend that you visit the local authority website and these websites which offer helpful information and advice about letting

[www.gov.uk/government/publications/how-to-rent](http://www.gov.uk/government/publications/how-to-rent)

[www.gov.uk/private-renting](http://www.gov.uk/private-renting)

[www.wardsokent.co.uk/letting/our-tenancy-fees/](http://www.wardsokent.co.uk/letting/our-tenancy-fees/)

[www.gov.uk/green-deal-energy-saving-measures](http://www.gov.uk/green-deal-energy-saving-measures)

**Call Dover 01304 201109 ■ [wardsokent.co.uk](http://wardsokent.co.uk)**

IMPORTANT INFORMATION: Please note that administration fees are charged in addition to the rent and security deposit. Please contact our Lettings Team who will confirm the total costs involved in renting this property. For clarification, we wish to inform the prospective tenant that we have prepared these details as a general guide. The agent has not carried out a detailed survey nor tested the services, appliances, or specific fittings (unless otherwise stated), and no warranty can be given as to their condition. All room measurements are taken at floor level. We strongly recommend that all the information which we provide about the property is verified by yourself and your advisers. The contents of this publication are © Wards, 2015. Wards is a trading name of Arun Estates Limited Registered in England No. 2597969

## Accommodation

### FIRST FLOOR

Hall

Bathroom: 1.52m x 2.88m 5' x 9'6"

Open Plan Living: 6.17m x 2.88m 20'3" x 9'6"

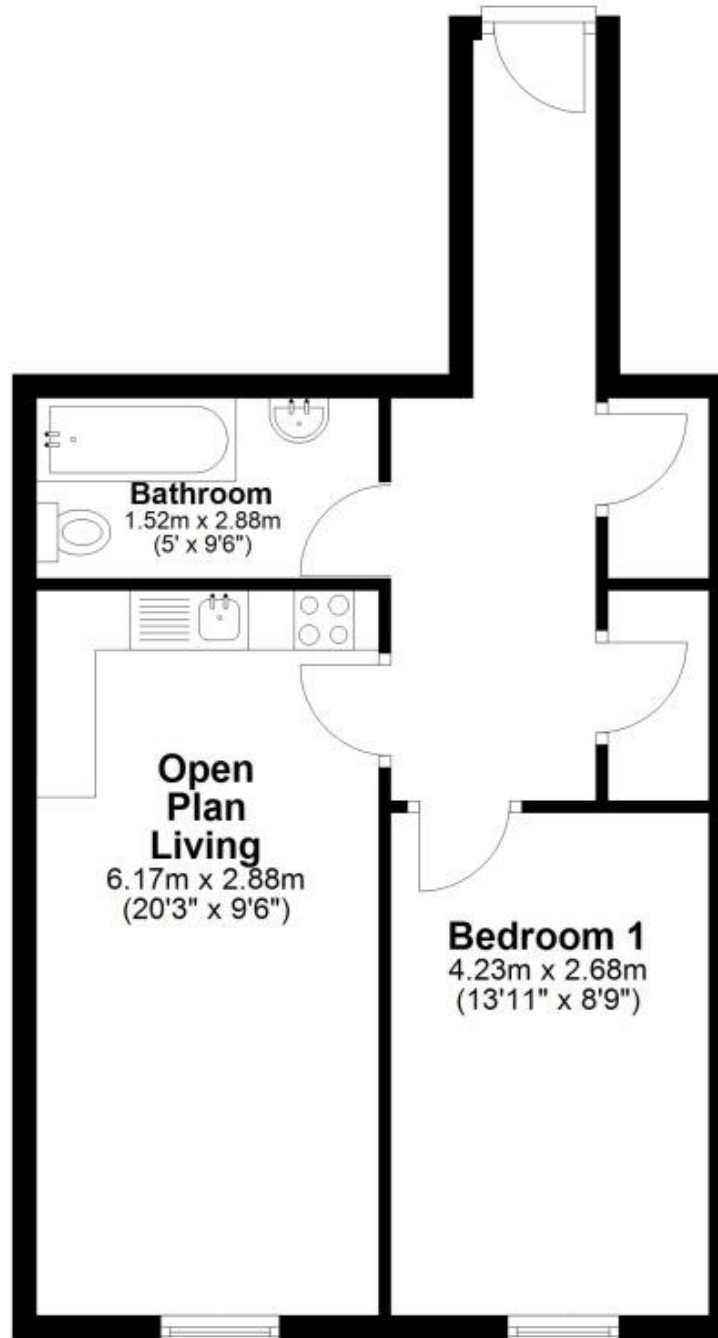
Bedroom 1: 4.23m x 2.68m 13'11" x 8'9"

EPC RATING	CURRENT:	POTENTIAL:



## First Floor

Approx. 47.0 sq. metres (506.1 sq. feet)



Total area: approx. 47.0 sq. metres (506.1 sq. feet)