



Price

£1,400 PCM

Fees Apply



Available 03/05/25

**Witley Walk
Whitfield CT16**

Wards
Helping you move forwards



Main Features

3 bedroom mid terraced house

garage-en-bloc

Low maintenance patio garden

Great location

Open house 3rd May

Video tour available



Deposit required is £1,615.38
Dover District - Council Tax Band Tax Band C

Renting a property is a big commitment and we recommend that you visit the local authority website and these websites which offer helpful information and advice about letting

www.gov.uk/government/publications/how-to-rent

www.gov.uk/private-renting

www.wardsofkent.co.uk/letting/our-tenancy-fees/

www.gov.uk/green-deal-energy-saving-measures

Call Dover 01304 201109 ■ wardsofkent.co.uk

IMPORTANT INFORMATION: Please note that administration fees are charged in addition to the rent and security deposit. Please contact our Lettings Team who will confirm the total costs involved in renting this property. For clarification, we wish to inform the prospective tenant that we have prepared these details as a general guide. The agent has not carried out a detailed survey nor tested the services, appliances, or specific fittings (unless otherwise stated), and no warranty can be given as to their condition. All room measurements are taken at floor level. We strongly recommend that all the information which we provide about the property is verified by yourself and your advisers. The contents of this publication are © Wards, 2015. Wards is a trading name of Arun Estates Limited Registered in England No. 2597969

Accommodation

GROUND FLOOR

Porch

lounge: 4.37m x 4.72m 14'4" x 15'6"

Kitchen / Dining Room: 3.53m x 4.72m 11'7" x 15'6"

FIRST FLOOR

Landing

Bedroom 1: 4.84m x 2.75m 15'11" x 9'

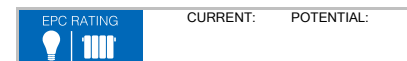
Bedroom 2: 2.84m x 2.75m 9'4" x 9'

Bedroom 3: 2.95m x 1.87m 9'8" x 6'1"

Bathroom

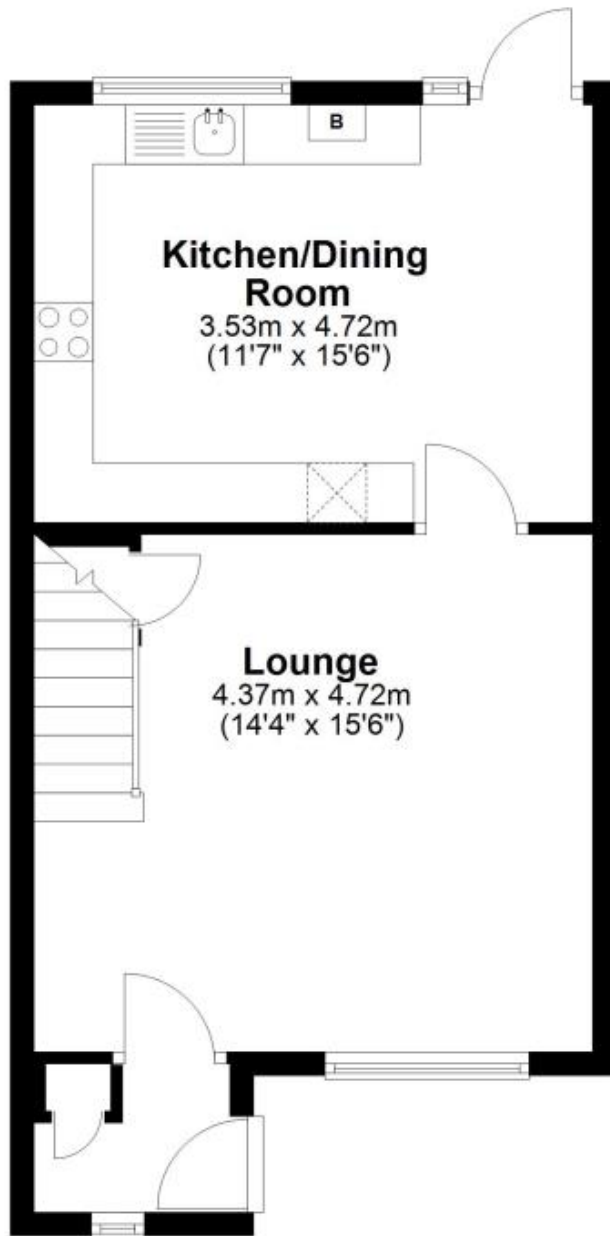
GARAGE

Garage: 4.98m x 2.53m 16'4" x 8'4"



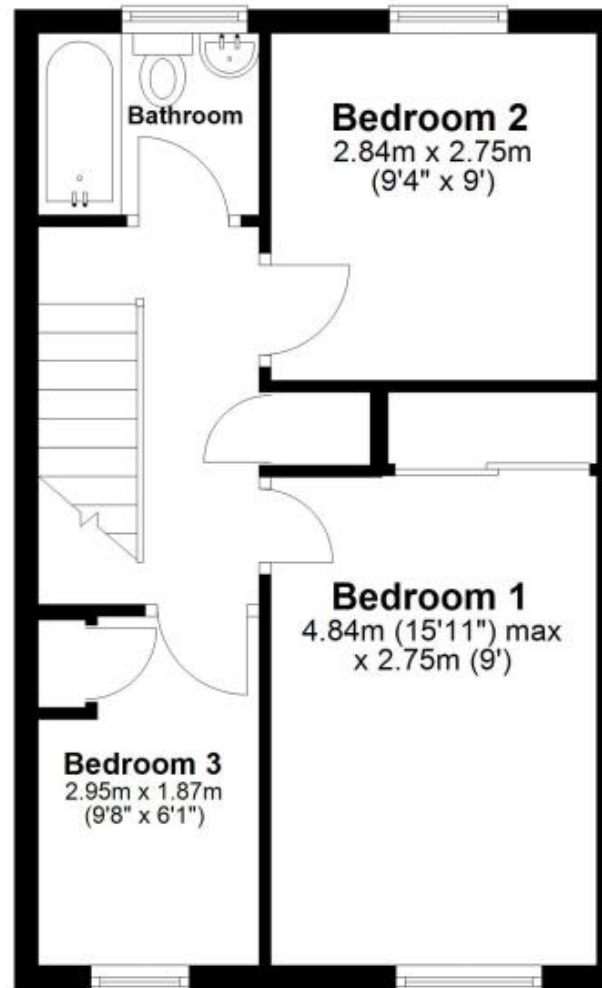
Ground Floor

Approx. 40.0 sq. metres (430.6 sq. feet)



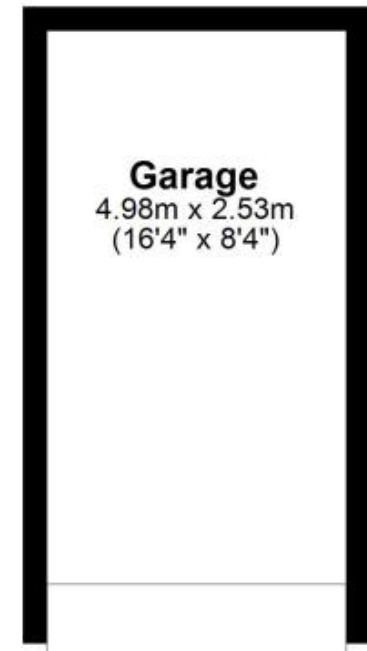
First Floor

Approx. 36.9 sq. metres (397.4 sq. feet)



Garage

Approx. 12.6 sq. metres (135.5 sq. feet)



Total area: approx. 89.5 sq. metres (963.5 sq. feet)