

Jonathan Hunt

ESTATE AGENCY

20 High Street Ware SG12 9BX

Tel: 01920 411090

8 High Street Buntingford SG9 9AG

Tel: 01763 272727

info@jonathan-hunt.co.uk

www.jonathanhunt.co.uk



Bridewell House Wyddial Road, Buntingford, SG9 9AX

Asking Price £1,200,000

An Exceptional Grade II Listed Residence | Five Bedrooms | Exquisite Restoration | Bespoke Interiors | Historic Elegance Meets Modern Luxury

A rare opportunity to acquire this magnificently restored Grade II listed detached home, showcasing exceptional craftsmanship and an abundance of original character throughout. Set in a picturesque setting overlooking

Buntingfords Ford, this distinctive residence offers a harmonious blend of period charm and contemporary refinement.

The accommodation extends to five bedrooms and four elegant reception rooms, including a breathtaking lounge with exposed beams, and a striking inglenook fireplace. The bespoke kitchen has been thoughtfully designed for both family living and entertaining, with handcrafted details and quality finishes throughout.

Original features are found in abundance—exposed brickwork, timbers, and feature fireplaces—all sympathetically preserved and enhanced to retain the home's heritage. Additional highlights include luxury bath and shower rooms, a utility room, and ground floor WC.

To the rear, the landscaped gardens offer a private and tranquil retreat, featuring a large stone patio, raised lawn, vegetable garden and mature planting throughout. There is also off-street parking for up to five vehicles.

This is a home of rare distinction, where timeless architecture, modern comfort, and a refined lifestyle converge.

Buntingford Branch - Company No. 10303541 VAT No. 10303541

Ware Branch - Company No. 4759215 VAT No. 700174975

Bridewell House Wyddial Road, Buntingford, SG9 9AX

LOUNGE 27'7" x 18'10" (8.43 x 5.76)

DINING ROOM 19'2" x 10'4" (5.85 x 3.17)

KITCHEN 13'1" x 12'1" (4.01 x 3.7)

UTILITY ROOM 8'8" x 5'9" (2.66 x 1.77)

RECEPTION 22'4" x 10'0" (6.83 x 3.06)

RECEPTION 19'1" x 7'6" (5.83 x 2.31)

PRINCIPAL BEDROOM 15'11" x 12'9" (4.87 x 3.91)

BEDROOM TWO 16'1" x 9'6" (4.92 x 2.91)

BEDROOM THREE 14'6" x 8'9" (4.44 x 2.69)

BEDROOM FOUR 11'5" x 10'3" (3.5 x 3.14)

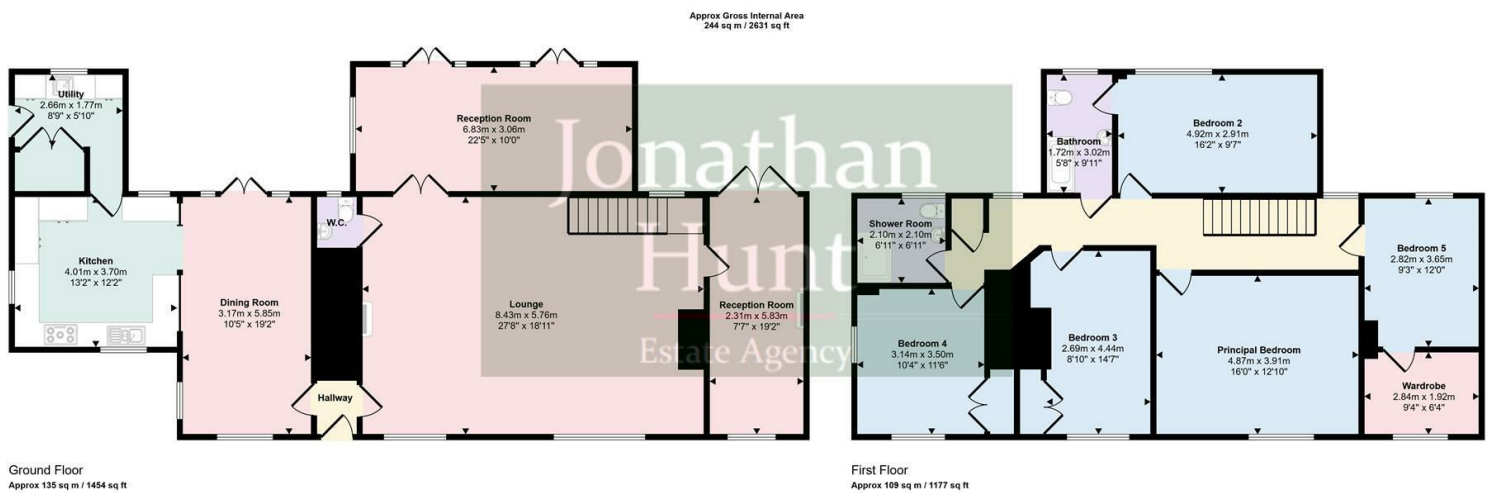
BEDROOM FIVE 11'11" x 9'3" (3.65 x 2.82)

DRESSING ROOM/STUDY 9'3" x 6'3" (2.84 x 1.92)

BATHROOM 9'10" x 5'7" (3.02 x 1.72)

SHOWER ROOM 6'10" x 6'10" (2.1 x 2.1)





This floorplan is only for illustrative purposes and is not to scale. Measurements of rooms, doors, windows, and any items are approximate and no responsibility is taken for any error, omission or mis-statement. Icons of items such as bathroom suites are representations only and may not look like the real items. Made with Made Snappy 360.