

Jonathan Hunt

ESTATE AGENCY

20 High Street Ware SG12 9BX

Tel: 01920 411090

8 High Street Buntingford SG9 9AG

Tel: 01763 272727

info@jonathan-hunt.co.uk

www.jonathanhunt.co.uk



Jonathan

8 Hay Street, Braughing, Ware, SG11 2RJ

£799,950

8 Hay Street, Braughing, Ware, SG11 2RJ

A Rare Countryside Gem – Detached Four-Bedroom Bungalow with Panoramic Views - CHAIN FREE -

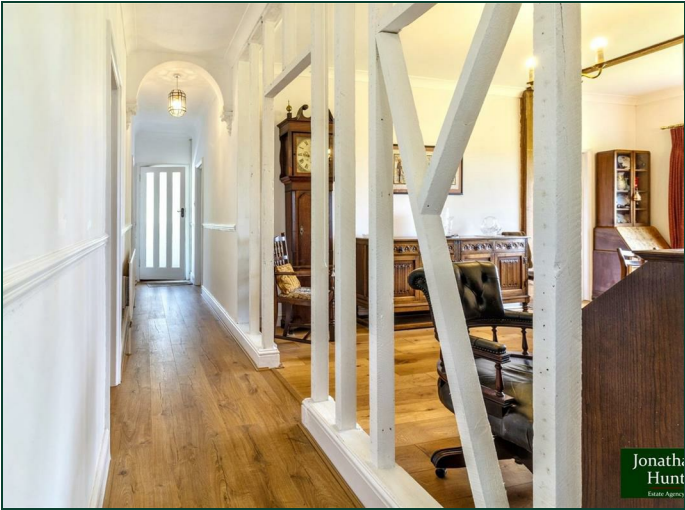
Nestled on the peaceful outskirts of Braughing, this exceptional four-bedroom detached bungalow enjoys far-reaching, panoramic views across unspoiled open countryside. Set within a generous plot of approximately 0.4 acres, the property offers a unique opportunity to create a bespoke countryside residence tailored to your own vision.

The lower ground floor features a fully self-contained annexe—perfect for multi-generational living, guest accommodation, or potential rental income. The heart of the home is the expansive lounge, where dual-aspect windows bathe the space in natural light and frame uninterrupted rural vistas. From here, a balcony extends outward, offering a serene spot to soak in the surrounding landscape.

Four generously sized double bedrooms provide flexible and comfortable living, while a detached double garage and a large driveway ensure ample parking and storage options.

The extensive garden further elevates the appeal, offering a wealth of possibilities—from children’s play areas and outdoor entertaining spaces to dedicated zones for landscaping or growing your own produce.

This is a rare opportunity to reimagine a substantial property in a truly idyllic setting. Early viewing is strongly advised to appreciate the full potential and breathtaking location of this countryside retreat.



ENTRANCE HALL

BEDROOM 2 11'1" x 10'7" (3.38 x 3.24)

BEDROOM 3 11'0" x 10'7" (3.36 x 3.25)

BEDROOM 4 11'0" x 8'11" (3.36 x 2.72)

DINING ROOM 17'8" x 11'0" (5.41 x 3.36)

STUDY 10'7" x 5'9" (3.23 x 1.77)

KITCHEN 11'0" x 9'6" (3.37 x 2.92)

LOUNGE 20'5" x 14'4" (6.24 x 4.37)

BALCONY 15'2" x 5'6" (4.64 x 1.7)

PRINCIPAL BEDROOM 15'10" x 9'6" (4.83 x 2.91)

BATHROOM 9'2" x 6'3" (2.81 x 1.91)

LOWER GROUND FLOOR ANNEX

KITCHEN AREA 13'8" x 4'0" (4.19 x 1.24)

LIVING ROOM 13'10" x 11'2" (4.23 x 3.41)

WET ROOM 7'3" x 4'10" (2.22 x 1.49)

STORAGE ROOM 8'2" x 5'0" (2.5 x 1.54)

STORAGE ROOM 21'2" x 10'4" (6.46 x 3.15)



Jonathan
Hunt
Estate Agency



Jonathan
Hunt
Estate Agency



Jonathan
Hunt
Estate Agency



Jonathan
Hunt
Estate Agency



Lower Ground Floor Annex
Approx 56 sq m / 598 sq ft

- Storage Room: 2.50m x 1.54m (8'2" x 5'1")
- Shower Room: 2.22m x 1.49m (7'3" x 4'11")
- Lounge Diner: 4.23m x 3.41m (13'11" x 11'2")
- Kitchen: 4.19m x 1.24m (13'9" x 4'1")
- Storage Room: 3.15m x 6.46m (10'4" x 21'2")

Ground Floor
Approx 145 sq m / 1557 sq ft

- Balcony: 4.64m x 1.70m (15'3" x 5'7")
- Lounge: 4.37m x 6.24m (14'4" x 20'6")
- Principal Bedroom: 2.91m x 4.83m (9'7" x 15'10")
- En Suite
- Bathroom: 2.81m x 1.91m (9'3" x 6'3")
- Kitchen: 3.37m x 2.92m (11'1" x 9'7")
- Dining Room: 5.41m x 3.36m (17'9" x 11'0")
- Study: 1.77m x 3.23m (5'10" x 10'7")
- Bedroom 2: 3.38m x 3.24m (11'1" x 10'8")
- Bedroom 3: 3.36m x 3.25m (11'0" x 10'8")
- Bedroom 4: 3.36m x 2.72m (11'0" x 8'11")
- Porch: 2.06m x 1.14m (6'9" x 3'9")

Garage
Approx 31 sq m / 329 sq ft

- Garage: 5.20m x 5.87m (17'1" x 19'3")

