

Jonathan Hunt

ESTATE AGENCY

20 High Street Ware SG12 9BX

Tel: 01920 411090

8 High Street Buntingford SG9 9AG

Tel: 01763 272727

info@jonathan-hunt.co.uk

www.jonathanhunt.co.uk



Jonathan

47 Hummerston Close, Buntingford, SG9 9SX

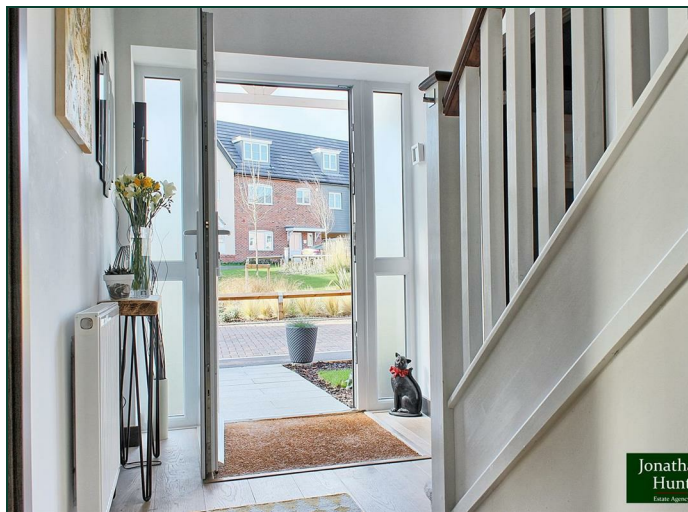
Guide Price £649,000

47 Hummerston Close, Buntingford, SG9 9SX

This elegant detached family home, with its timeless design and high-quality finish, is a true gem. Nestled in a peaceful, exclusive development, it enjoys a prime corner plot location overlooking a beautifully landscaped green, providing a bright and open outlook.

The property boasts four spacious double bedrooms, including a luxurious master suite with a private en-suite bathroom and a walk-in wardrobe. The main family bathroom is designed to the highest standards, offering both style and comfort. The heart of the home is the designer kitchen and dining area, fitted with premium integrated appliances that blend functionality with sophistication.

The expansive lounge, complete with French doors, opens onto a sunny and meticulously maintained garden, featuring an array of plants and shrubs for year-round enjoyment. Just a short stroll from Buntingford High Street, this home combines modern luxury with convenient access to local amenities, making it ideal for family living.



ENTRANCE HALL

LOUNGE 18'1" x 11'6" (5.52m x 3.51m)

LOUNGE image 2

KITCHEN/DINER 18'3" x 10'7" (5.57m x 3.25m)

KITCHEN/DINER image 2

KITCHEN/DINER image 3

FIRST FLOOR

MASTER BEDROOM 17'10" x 11'5" (5.46m x 3.50m)

EN-SUITE 7'2" x 6'2" (2.2 x 1.89)

WALK-IN WARDROBE 6'1" x 5'8" (1.87 x 1.75)

BEDROOM TWO 12'10" x 11'6" (3.93 x 3.51m)

BEDROOM THREE 11'1" x 10'6" (3.39m x 3.21m)

BEDROOM FOUR 13'0" x 9'11" (3.97 x 3.03)

BATHROOM 9'4" x 7'1" (2.87 x 2.16)

PREMIUM FINISHES

DESIGNER OAKWOOD KITCHEN

Stainless steel oven, ceramic hob, integrated fridge/freezer, washer/dryer and dishwasher.

Quartz stone worktops.

Fascino hand-finished, stainless steel sink with curved tap and instant boiling water tap.

LUXURY BATHROOM & EN-SUITE

Fascino digitally-controlled smart tap.

Smart mirror with LED lighting and de-mist.

Walnut vanity unit with black porcelain worktop.

RAK ceramic basin, hygiene + WC with rimless pan and soft close seat.

Fascino smart shower and bath.

Heated chrome towell rails.

RAK ceramic wall and floor tiles.

Low-level LED strip lighting.

GENERAL SPECIFICATION

Forest oak style doors with polished chrome ironmongery.

White oak wooden flooring to ground floor.

Fitted carpets to first floor.

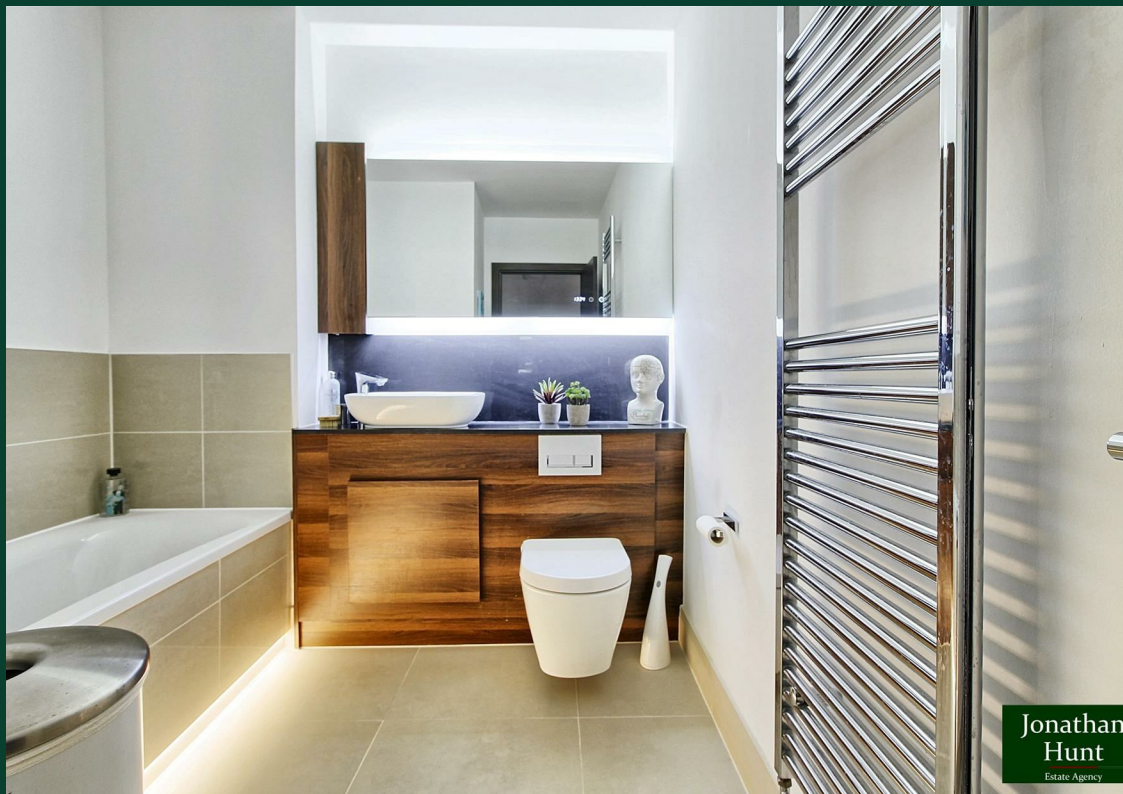
Walk-in wardrobe to master bedroom.

USB double power sockets

GARDEN

CAR PORT

Off-street under cover parking for 2 cars



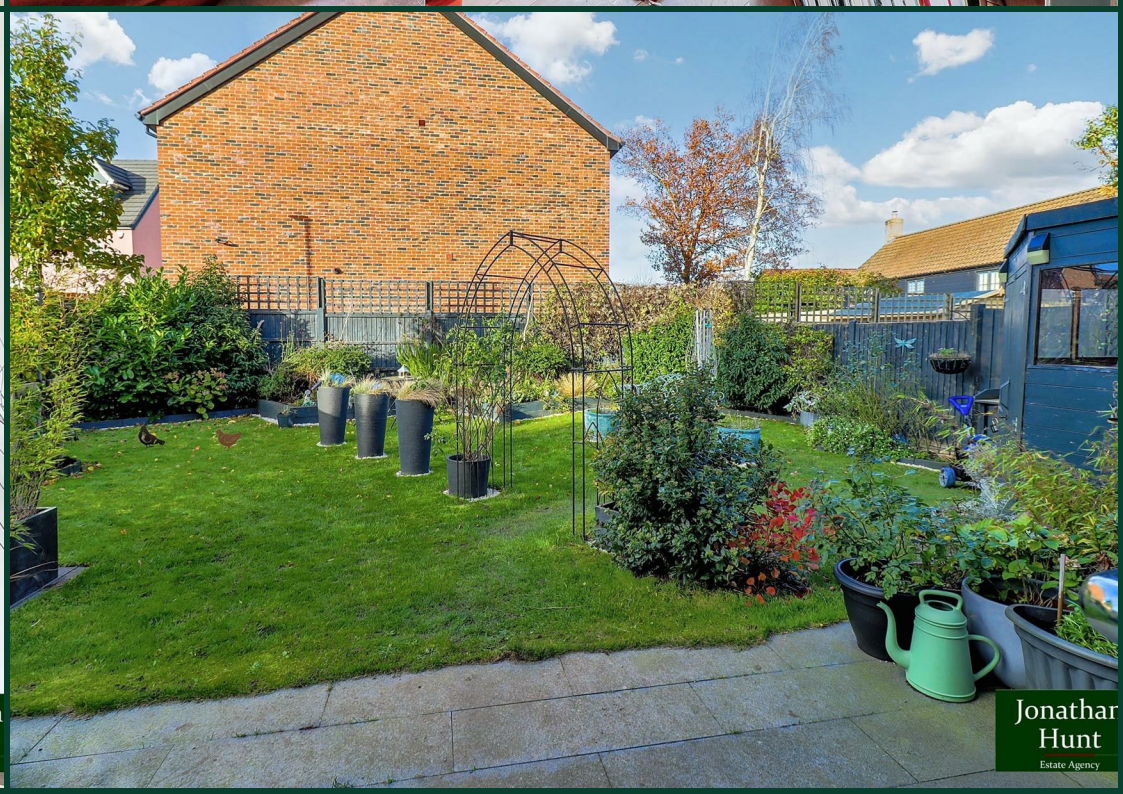
Jonathan
Hunt
Estate Agency



Jonathan
Hunt
Estate Agency



Jonathan
Hunt
Estate Agency



Jonathan
Hunt
Estate Agency





This floorplan is only for illustrative purposes and is not to scale. Measurements of rooms, doors, windows, and any items are approximate and no responsibility is taken for any error, omission or mis-statement. Icons of items such as bathroom suites are representations only and may not look like the real items. Made with Made Snappy 360.

