

Jonathan Hunt

ESTATE AGENCY

20 High Street Ware SG12 9BX

Tel: 01920 411090

8 High Street Buntingford SG9 9AG

Tel: 01763 272727

info@jonathan-hunt.co.uk

www.jonathanhunt.co.uk



Jonathan
Hunt
Estate Agency



16 Peasmead, Buntingford, SG9 9SF

£345,000

Nestled in a sought-after residential area, this delightful 2-bedroom mid-terrace home presents a wonderful opportunity for first-time buyers or those looking to downsize. The property benefits from a recently refitted kitchen and bathroom, sunny Garden and allocated Parking.

CHAIN FREE - this property is ready for you to move into without delay, making the transition as smooth as possible. Located within a friendly community, the property is in close proximity to local amenities, schools, and public transport links, offering both convenience and a peaceful residential setting.

Contact us today to arrange a viewing.

Buntingford Branch - Company No. 10303541 VAT No. 10303541

Ware Branch - Company No. 4759215 VAT No. 700174975

16 Peasmead, Buntingford, SG9 9SF

LOUNGE 9'5" x 15'9" (2.88 x 4.81)



BEDROOM ONE 9'6" x 9'10" (2.90 x 3.02)



DINING AREA 6'10" x 8'2" (2.09 x 2.51)



BATHROOM 5'10" x 7'0" (1.78 x 2.14)



KITCHEN 5'4" x 8'3" (1.65 x 2.52)



BEDROOM TWO 12'10" x 8'4" (3.92 x 2.55)



LANDING

16 Peasmead, Buntingford, SG9 9SF

GARDEN



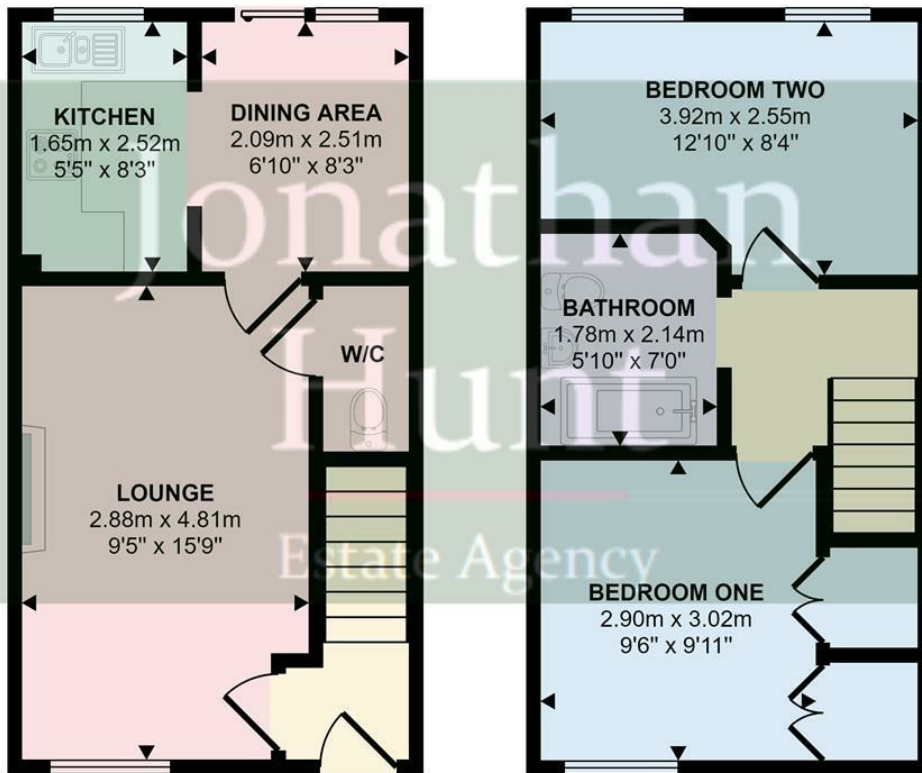
ALLOCATED PARKING



Energy Efficiency Rating		Current	Potential
Very energy efficient - lower running costs			
(92 plus) A		88	63
(81-91) B			
(69-80) C			
(55-68) D			
(39-54) E			
(21-38) F			
(1-20) G			
Not energy efficient - higher running costs			
England & Wales		EU Directive 2002/91/EC	

Environmental Impact (CO ₂) Rating		Current	Potential
Very environmentally friendly - lower CO ₂ emissions			
(92 plus) A			
(81-91) B			
(69-80) C			
(55-68) D			
(39-54) E			
(21-38) F			
(1-20) G			
Not environmentally friendly - higher CO ₂ emissions			
England & Wales		EU Directive 2002/91/EC	

Approx Gross Internal Area
59 sq m / 631 sq ft



Ground Floor
Approx 29 sq m / 315 sq ft

First Floor
Approx 29 sq m / 316 sq ft

This floorplan is only for illustrative purposes and is not to scale. Measurements of rooms, doors, windows, and any items are approximate and no responsibility is taken for any error, omission or mis-statement. Icons of items such as bathroom suites are representations only and may not look like the real items. Made with Made Snappy 360.