

Jonathan Hunt

ESTATE AGENCY

20 High Street Ware SG12 9BX

Tel: 01920 411090

8 High Street Buntingford SG9 9AG

Tel: 01763 272727

info@jonathan-hunt.co.uk

www.jonathanhunt.co.uk



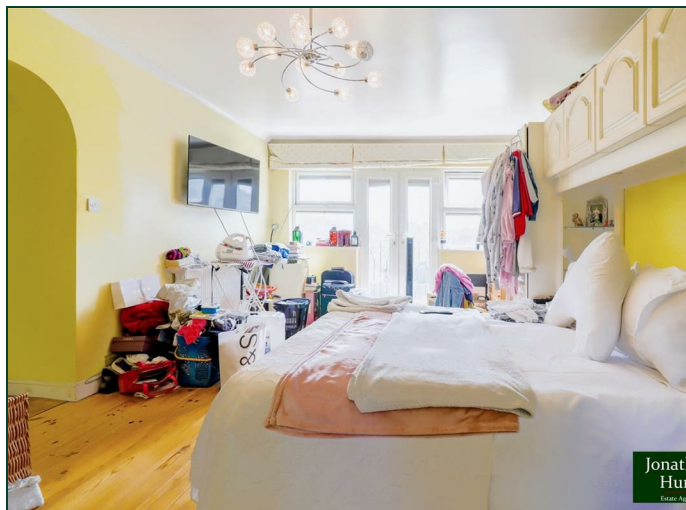
Jonathan

241 Monks Walk, Buntingford, SG9 9DZ

Price Guide £395,000

241 Monks Walk, Buntingford, SG9 9DZ

Presenting this extended four-bedroom end of terraced house, boasting a delightful combination of space and potential. Step through the door and discover a sunny garden, an integral garage primed for transformation or providing ample parking and storage solutions. Inside, the property offers four double bedrooms, ensuring comfort and versatility for family living or accommodating guests. The generous principal bedroom features its own en-suite shower room and "Juliette" doors over looking the rear garden. The layout is thoughtfully designed, with a bright lounge, dining room, and well-appointed kitchen/breakfast room, providing a seamless flow for both relaxation and entertaining. A convenient ground floor WC adds practicality to the home. Ideally positioned near the town centre amenities and reputable schools and with the absence of a chain, a streamlined buying process. With its blank canvas waiting for your personal touch, this property presents an enticing opportunity to create your ideal home. Don't miss the chance to make this house your own - schedule a viewing today!



ENTRANCE HALL

KITCHEN 12'8" x 9'1" (3.87 x 2.78)

LOUNGE ROOM 18'2" x 13'2" (5.56 x 4.03)

DINING ROOM 17'2" x 7'1" (5.24 x 2.17)

W/C

PRINCIPLE BEDROOM 18'8" x 12'2" (5.7 x 3.73)

EN-SUITE 7'4" x 5'9" (2.25 x 1.76)

BEDROOM TWO 10'8" x 9'10" (3.26 x 3)

BEDROOM THREE 11'8" x 9'5" (3.57 x 2.88)

BEDROOM FOUR 9'10" x 7'4" (3.01 x 2.24)

BATHROOM 8'3" x 5'3" (2.53 x 1.61)

INTEGRAL GARAGE

REAR GARDEN



Jonathan
Hunt
Estate Agency



Jonathan
Hunt
Estate Agency



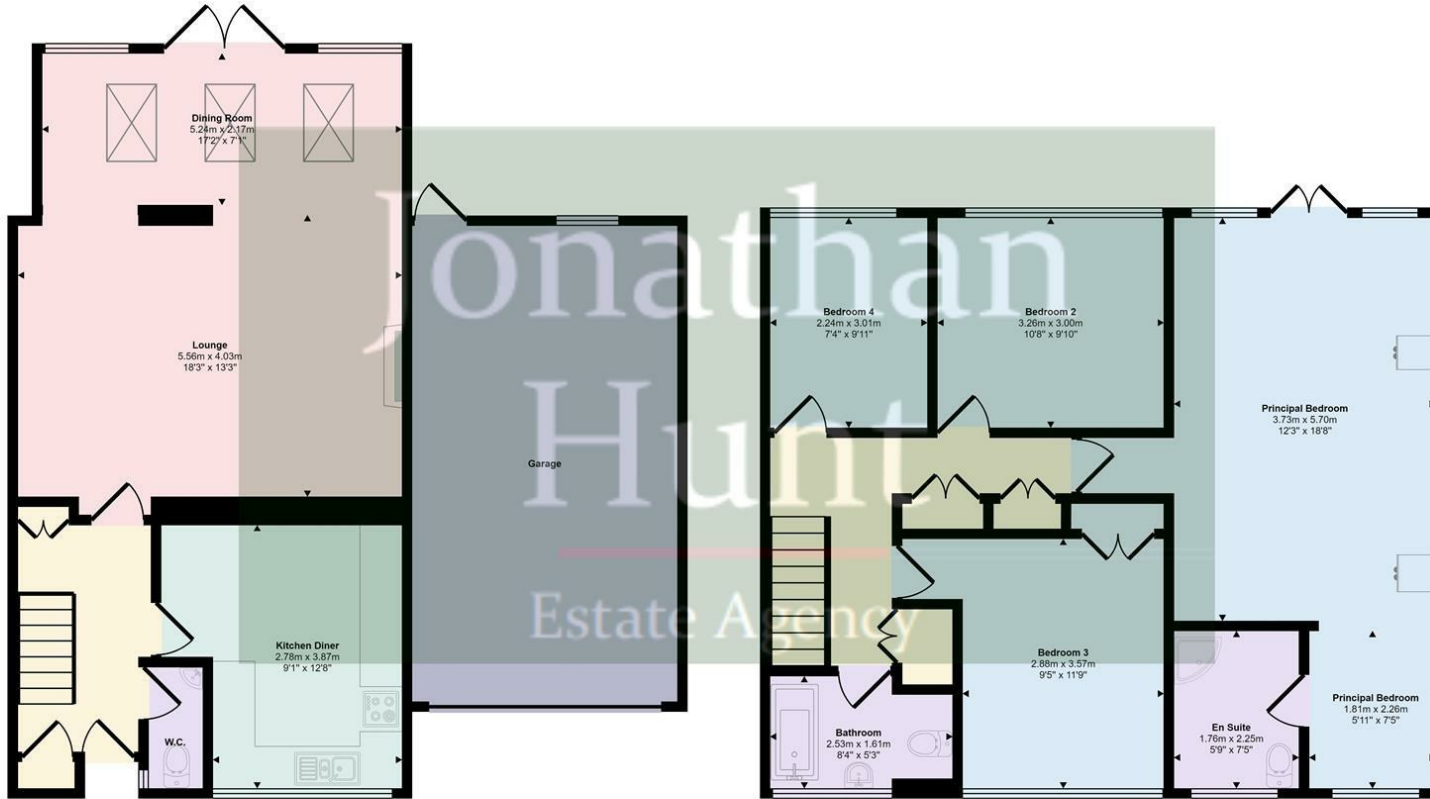
Jonathan
Hunt
Estate Agency



Jonathan
Hunt
Estate Agency



Approx Gross Internal Area
162 sq m / 1740 sq ft



Ground Floor
Approx 84 sq m / 909 sq ft

First Floor
Approx 77 sq m / 831 sq ft

This floorplan is only for illustrative purposes and is not to scale. Measurements of rooms, doors, windows, and any items are approximate and no responsibility is taken for any error, omission or mis-statement. Icons of items such as bathroom suites are representations only and may not look like the real items. Made with Made Snappy 360.

