



{ OLD WOKING ROAD WEST BYFLEET KT14  
£1,600 PER MONTH AVAILABLE 27/11/2025




**Hamptons**  
THE HOME EXPERTS



# { THE PARTICULARS

Old Woking Road West Byfleet  
KT14

£1,600 Per Month  
Unfurnished

 2 Bedrooms  
 2 Bathrooms  
 1 Reception

## Features

- Two double bedrooms, - Master bedroom with en-suite, - Modern and full integrated kitchen, - One Allocated parking space, - Offered unfurnished, - Council Tax band C, - EPC C, - -

## Council Tax

Council Tax Band C

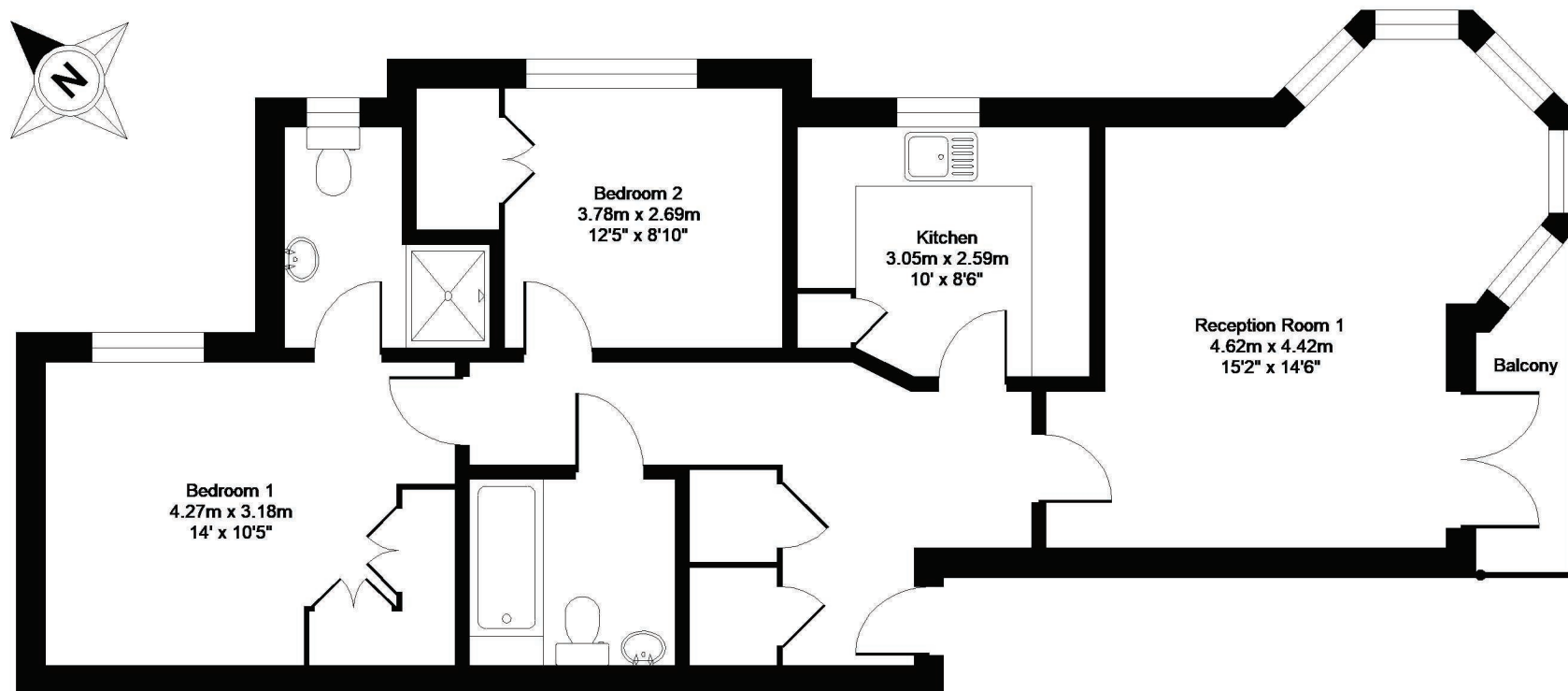
Hamptons  
26 High Street  
Weybridge, KT13 8AB  
01932639001  
WeybridgeLettings@hamptons.co.uk  
www.hamptons.co.uk

# { A TWO BEDROOM APARTMENT IN WEST BYFLEET. EPC C

## The Property

This bright and spacious top floor two bedroom apartment is situated in a gated development and is within a short walking distance to West Byfleet village and mainline station with direct links to Waterloo. This apartment is in excellent decorative order throughout and comprises of a separate fully fitted kitchen, large lounge with a turret dining area, two double bedrooms with fitted storage, master bedroom with en-suite shower room and family bathroom. The property also benefits from one allocated parking space.





**SECOND FLOOR**

## Hamilton Place, Old Woking Road, West Byfleet, KT14

**APPROX. GROSS INTERNAL FLOOR AREA 791 SQ FT 73.5 SQ METRES**

Whilst every attempt has been made to ensure the accuracy of the floor plan contained here, measurements of doors, windows and rooms are approximate and no responsibility is taken for any error, omission or misstatement. These plans are for representation purposes only as defined by RICS Code of Measuring Practice and should be used as such by any prospective purchaser. Specifically no guarantee is given on the total square footage of the property if quoted on this plan. Any figure given is for initial guidance only and should not be relied on as a basis of valuation.

**Copyright nichecom.co.uk 2017 Produced for Hamptons Country Lettings REF : 164707**

### For Clarification

We wish to inform prospective tenants that we have prepared these particulars as a general guide and they have been confirmed as accurate by the landlord. We have not verified permissions, nor carried out a survey, tested the services, appliances and specific fittings. Room sizes are approximate and measurement figures rounded: they are taken between internal wall surfaces and therefore include cupboards/shelves, etc. Accordingly, they should not be relied upon for

carpets and furnishings. It should also be noted that all fixtures and fittings, carpeted, curtains/blinds, kitchen equipment and garden statuary, whether fitted or not, are deemed removable by the landlord unless specifically itemised with these particulars. Please enquire in office or on our website for details on holding deposit and tenancy deposit figures.

