



MOWBRAY HOUSE

 O'MALLEY  
PROPERTY

 O'MALLEY

**Flat C Main Street**  
Dunfermline, KY11 8EE

[omalleyproperty.com](http://omalleyproperty.com)  
01259212337



## Description

O'Malley Property are delighted to bring to the market this 2 bedroom ground floor flat in the Dunfermline area.

On entering the property, the light and bright lounge area has ample space for a three piece suite and additional free standing furniture. The modern kitchen offers a good supply of high end, gloss finished floor and wall storage units, drawer units, integrated fan assisted electric oven, four burner hob, wood effect work surfaces. The whole room enjoys quality laminate flooring and down lighters to the ceiling.

The hallway gives access to the bedrooms and shower room, bedroom one is located to the rear of the property, which houses shelving units for storage. Bedroom two is also located to the rear of the property with double windows and white UPVC door allowing natural light to flood the room.

The shower room has been recently renovated and tastefully decorated with a marble finish and comprises; a WC, wash hand basin, shower compartment with thermostatically controlled shower.

Externally, there is private parking and communal gardens to the rear

The property further benefits from gas central heating and double glazing



---

**“Spacious Property”**

## Location

Main Street is a central thoroughfare in Halbeath, offering a blend of residential properties and local businesses. The area is conveniently located near key transport routes, including the M90 motorway, providing easy access to nearby cities such as Edinburgh.

## Lounge with Open Plan Kitchen

16'3" x 13'3"

## Bedroom 1

10'2" x 8'4"

## Bedroom 2

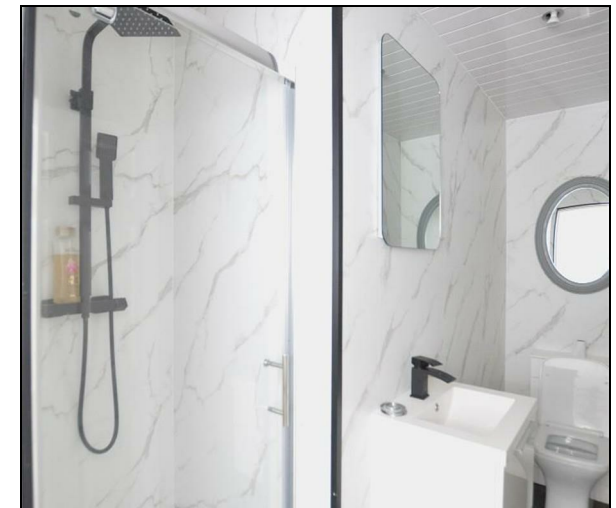
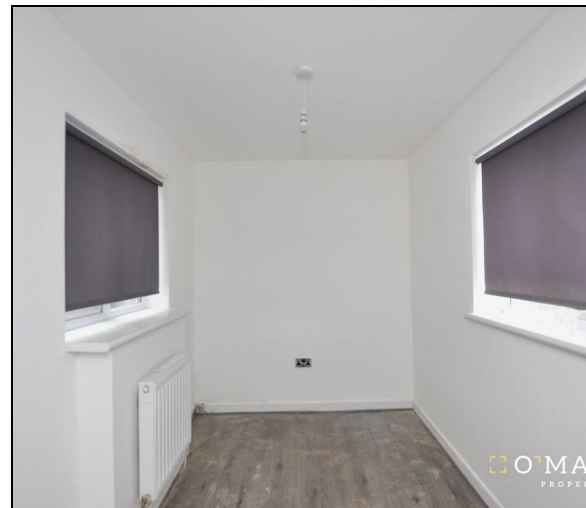
9'8" x 6'11"

## Home Report

The home report is available upon request.

## Fixtures & Fittings

All floor coverings, light fittings and window furniture are included with the sale.



---

**Offers Over £79,995**

**Viewing 9am - 9pm 7 days a week**

