



 O'MALLEY

 O'MALLEY

**4B Main Street**  
Alloa, FK10 2NX

**omalleyproperty.com**  
**01259212337**



## Description

Nestled in the heart of Cambus, Main Street's upper floor flat offers a charming and cozy one-bedroom retreat for those seeking a comfortable and convenient living space.

Upon entering this inviting apartment, you are greeted by a warm and spacious living area with plenty of natural light streaming in through large windows, creating an inviting ambiance. The well-appointed kitchen, adjacent to the living space, boasts modern appliances, ample counter space, and sleek cabinetry.

The spacious bedroom is tastefully decorated in neutral tones and is further enhanced by two built in wardrobes.

The bathroom is both contemporary and functional and comprises; a W.C, wash hand basin and bath with overhead shower.

Externally, on street parking is available.



---

**“Spacious Property”**



## Location

Main Street's upper floor flat is not only a delightful living space but also offers a convenient location. Within walking distance, you'll find a variety of local shops, restaurants, and essential amenities. The flat's upper floor position affords a sense of privacy and a pleasant view of the surrounding neighborhood.

## Living Room

14'9" x 12'10"

## Kitchen

8'11" x 7'11"

## Bedroom

14'9" x 10'4"

## Bathroom

10'4" x 6'9"

## Fixtures & Fittings

All fitted carpets, blinds, curtain poles, lighting and integrated appliances are included within the sale.

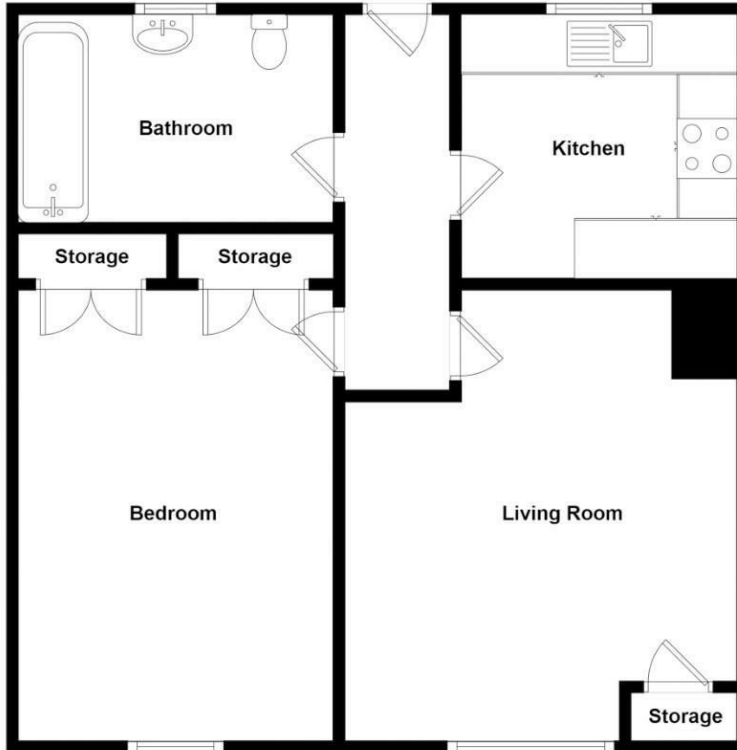
## Home Report

The home report is available upon request. [https://u2846247.ct.sendgrid.net/ls/click?upn=lfKer9ay-2B5sQgjY93O3I5kRMd1jJppUQ4E8RZ1HuwPfab3ez4GnjnJulVAv9gV-2BnfE141G4u4a1bjQGKQlr83i9z-2F5grWpZKQoZYhLwIAmMSUgeYo5PU6mVf-2BNzzKR4NGVF\\_kvCbCVgqxJrfXHVikiYI6K-2BHjcn-2B-2FsqBSFWJQn1gYwJJXfK8PRCptPq2NxCCUQ4hCILG0SS7-2FDjNp1GPpBKADJ2Rg0LKxb3OlelvW1g9awxZXFiz-2FZ54ZHLJyGd8Qh6GHYJBcKA6UEKESDLyygL8rZjkY6zMwn4p-2BBGe6RPqkNsHABq5ldY9zSZej8bfanDbzqEnXZ-2B2-2BaoCeuekFUMUtKfZzo4G3T-2F6vXDyxJDPDs-3D](https://u2846247.ct.sendgrid.net/ls/click?upn=lfKer9ay-2B5sQgjY93O3I5kRMd1jJppUQ4E8RZ1HuwPfab3ez4GnjnJulVAv9gV-2BnfE141G4u4a1bjQGKQlr83i9z-2F5grWpZKQoZYhLwIAmMSUgeYo5PU6mVf-2BNzzKR4NGVF_kvCbCVgqxJrfXHVikiYI6K-2BHjcn-2B-2FsqBSFWJQn1gYwJJXfK8PRCptPq2NxCCUQ4hCILG0SS7-2FDjNp1GPpBKADJ2Rg0LKxb3OlelvW1g9awxZXFiz-2FZ54ZHLJyGd8Qh6GHYJBcKA6UEKESDLyygL8rZjkY6zMwn4p-2BBGe6RPqkNsHABq5ldY9zSZej8bfanDbzqEnXZ-2B2-2BaoCeuekFUMUtKfZzo4G3T-2F6vXDyxJDPDs-3D)



**Fixed Asking Price £69,995**

**Viewing 9am - 9pm 7 days a week**



Whilst every attempt has been made to ensure the accuracy of the floorplan contained here, measurements of doors, windows, rooms and any other items are approximate and no responsibility is taken for any error, omission or mis-statement. This plan is for illustrative purposes only and should be used as such by any prospective purchaser. The services, systems and appliances shown have not been tested and no guarantee as to their operability or efficiency can be given.

