



 O'MALLEY

 O'MALLEY

26 Westfield Gardens
Alloa, FK10 4PQ

omalleyproperty.com
01259212337



Description

****UNEXPECTEDLY BACK ON THE MARKET ****

Welcome to this exquisite, one-of-a-kind modern masterpiece; a rare gem in the realm of new build homes. This luxurious 5-bedroom detached house, complete with a double garage, offers a contemporary living experience that is second to none. Nestled amidst the tranquility of its surroundings, this remarkable residence is adorned with sleek lines, impeccable finishes, and a harmonious fusion of form and function.

Step inside, and you will be captivated by the breathtaking open plan kitchen living space, the heart of the home. A true testament to modern design, this expansive area seamlessly combines the culinary delights of a state-of-the-art kitchen with the comforts of a spacious living area. The sleek, fully equipped kitchen boasts top-of-the-line appliances, ample storage, and a large central island, creating a haven for culinary enthusiasts and entertainers alike. The adjoining living space features elegant yet comfortable furnishings, perfectly positioned to enjoy the stunning views of the vast, mature garden through the expansive glass doors.

The abundant natural light that pours into the living space invites you to step outside and explore the outdoor oasis. The large, mature garden offers a serene sanctuary, complete with lush green lawns, vibrant flower beds, and mature trees. Whether it's hosting garden parties, engaging in outdoor activities with family and friends, or simply relishing in the beauty of nature, this private haven provides endless possibilities for relaxation and enjoyment.

This exceptional property also boasts five spacious bedrooms, each exuding an ambiance of comfort and tranquility. The master suite is a haven of indulgence, featuring a generous walk-in wardrobe and a luxurious ensuite bathroom,. The remaining bedrooms offer ample space for family members or guests

Completing this extraordinary residence is a double garage, providing secure parking for vehicles and additional storage space.



“Spacious Property”

Location

Kincardine provides a wide range of amenities as well as motorway links. There is also a wide selection of recreational facilities such as attractive walks and golf courses within the village and a wider selection of amenities can be found in the nearby town of Falkirk which is a short drive away.

Living Room/Kitchen

27'1" x 20'9"

Utility

11'2" x 6'9"

W/C

6'8" x 5'8"

Sitting Room

20'8" x 13'4"

Study

13'4" x 8'7"

Bedroom 1

13'4" x 12'7"

En-Suite

7'8" x 5'6"

Bedroom 2

13'4" x 9'8"

Bedroom 3

10'8" x 10'7"

Bedroom 4

10'8" x 10'2"

Bedroom 5

9'8" x 8'8"

Shower Room

6'10" x 5'6"

Bathroom

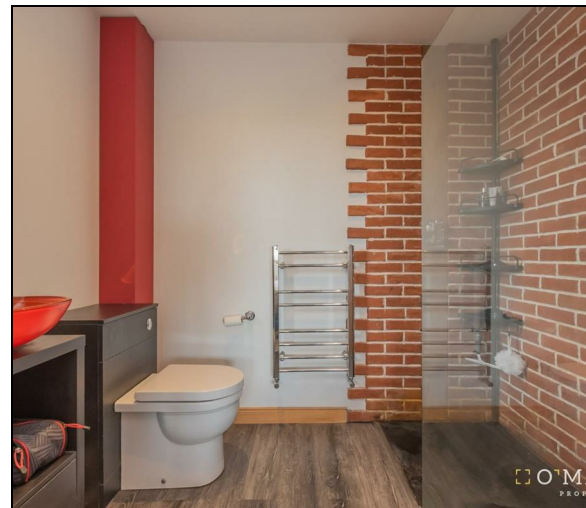
9'7" x 6'11"

Home Report

Home Report is available upon request.

Fixtures & Fittings

All carpets, floor coverings, blinds, light fittings and integrated appliances are included with the sale.



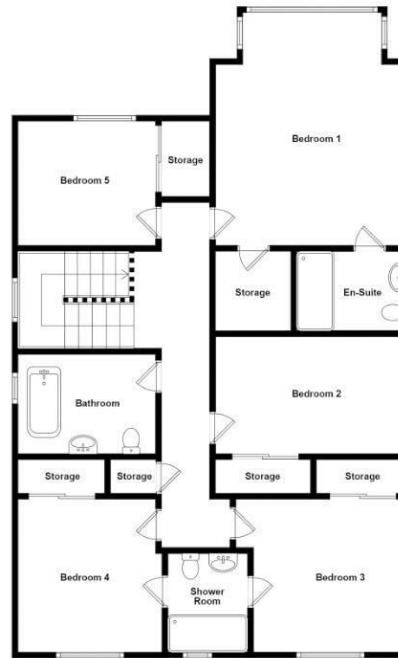
Fixed Asking Price £549,995

Viewing 9am - 9pm 7 days a week

Ground Floor



1st Floor



Whilst every attempt has been made to ensure the accuracy of the floorplan contained here, measurements of doors, windows, rooms and any other items are approximate and no responsibility is taken for any error, omission or mis-statement. This plan is for illustrative purposes only and should be used as such by any prospective purchaser. The services, systems and appliances shown have not been tested and no guarantee as to their operability or efficiency can be given.



Property Misdescriptions Act 1991.
While these particulars have been carefully compiled and are believed to be accurate, no warranty is given in this respect and potential purchasers should satisfy themselves as to any points arising therefrom. None of the items included in the sale of working or running nature such as central heating installation or mechanical or electrical equipment have been tested by us and no warranty is given in this respect and potential purchasers should satisfy themselves as to any points arising therefrom. Any photographs used are purely illustrative and may demonstrate only the surroundings. They are not therefore taken as indicative of the extent of the property, or that the photograph is taken from within the boundaries of the property, or of what is included in the sale.