



137 Lee Park London SE3



A very spacious first floor apartment in a beautiful Grade II listed period property just a three minute walk from Blackheath BR Station and Village with its excellent transport links and array of cafes, restaurants, pubs, shops and boutiques.

Located on one of Blackheath's most desirable tree lined residential streets, the light and bright apartment is decorated throughout in modern neutral tones and retains many period features. Entrance hall, double bedroom, bright sitting room opening onto the modern well equipped kitchen with integrated appliances including dishwasher, bathroom and separate utility room.

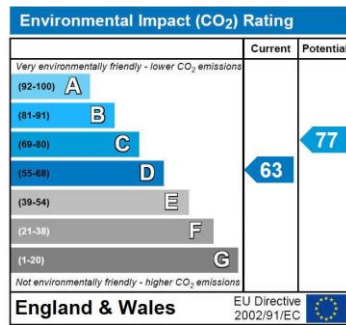
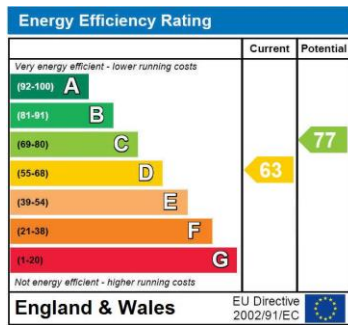
Price: £1,450 PCM

London Key
Nexus House
Cray Road
Kent DA14 5DA

020 8853 3690 / 07946 384 771

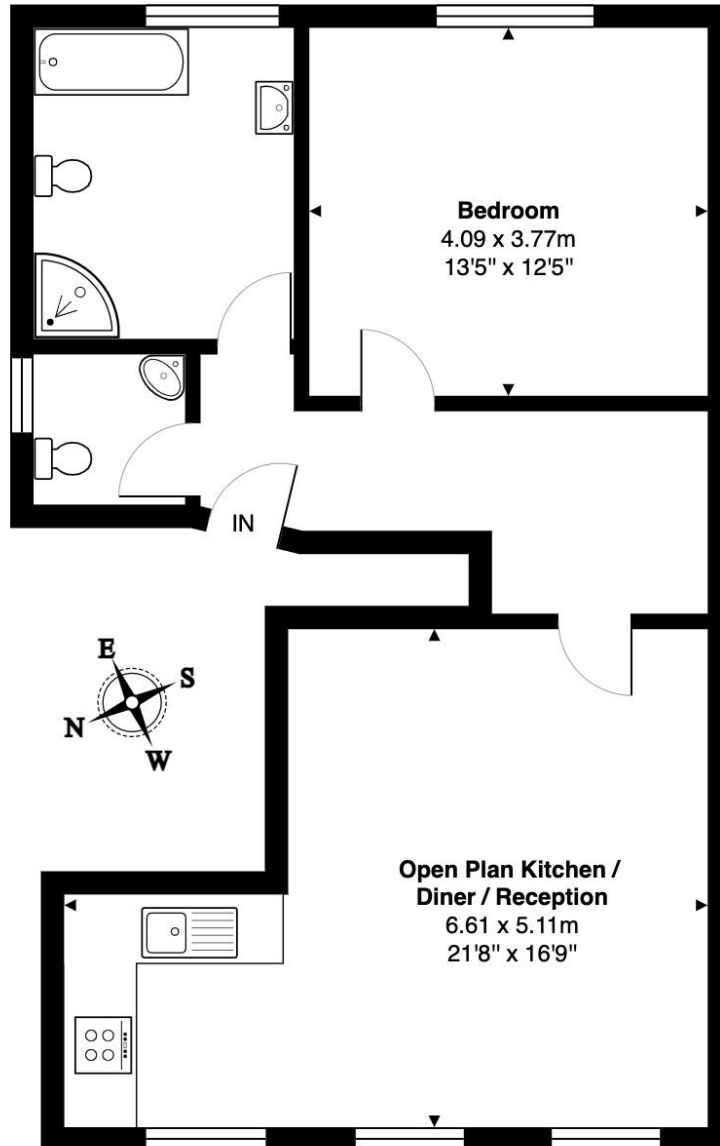
info@londonkey.co.uk

137 Lee Park



Lee Park, SE3

Total Area: 64.8 m² ... 698 ft²



First Floor

This Floorplan is provided without warranty, of any kind.
Bespoke Plans disclaims any warranty including,
without limitation, satisfaction, quality or accuracy of any dimensions

137 Lee Park

A very spacious first floor apartment in a beautiful Grade II listed period property just a three minute walk from Blackheath BR Station and Village with its excellent transport links and array of cafes, restaurants, pubs, shops and boutiques.

Located on one of Blackheath's most desirable tree lined residential streets, the light and bright apartment is decorated throughout in modern neutral tones and retains many period features.

Entrance hall, double bedroom, bright sitting room opening onto the modern well equipped kitchen with integrated appliances including dishwasher, bathroom and separate utility room.

Front door into communal hall way and stairs up to the first floor.
Personal front door into

Hallway

Wood laminate flooring.

Reception Room

Sash window to the rear. Wood laminate flooring. Coving and skirtings. wide archway through to the kitchen

Kitchen

A modern well equipped kitchen finished in high gloss white with contrasting work tops. Stainless steel sink and drainer. Integrated dishwasher, washer dryer and full height fridge freezer. Electric hob, dual oven and extractor. Sash window to the rear.

Guest cloakroom

Fitted in white with chrome fittings. Close coupled flush WC. Corner basin. Window to the side.

Bedroom

Set to the front with a large sash window.

Bathroom

Fitted in white with chrome fittings and comprising panel bath. Corner shower and glazed shower screen. Close coupled flush WC. Pedestal basin . Large sash window. Ceramic tiling to walls and floor.

Exterior

Communal gardens to the rear.

Whilst we endeavour to make out particulars as accurate as possible, if there is any point which is of particular importance to you please contact us and we will be pleased to check the information. Do so particularly if contemplating travelling some distance to view the property.