

house.

PARTNERSHIP

Moving estate agency on



h.

COPPET HOLD

Edinburgh Square
Midhurst GU29 9NL

In the heart of the historic market town of Midhurst, a delightful period townhouse which has recently undergone refurbishment yet retaining many character features

- Entrance hall
- Sitting room
- Kitchen / dining room and cellar
- Master bedroom with en suite shower room
- 2 further bedrooms
- Family bathroom
- Study area on landing
- Courtyard garden with utility outhouse
- Allocated parking space
- EPC: E



h.



h.




properties perfectly presented

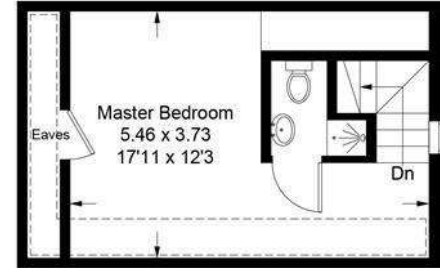


h.

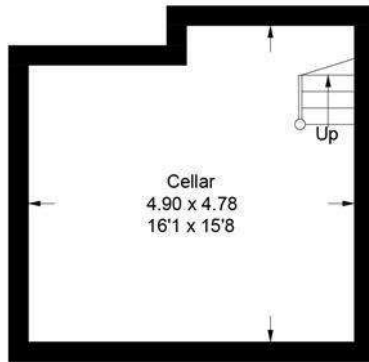
Approximate Gross Internal Area = 129.8 sq m / 1398 sq ft
(Excludes Restricted Head Height)



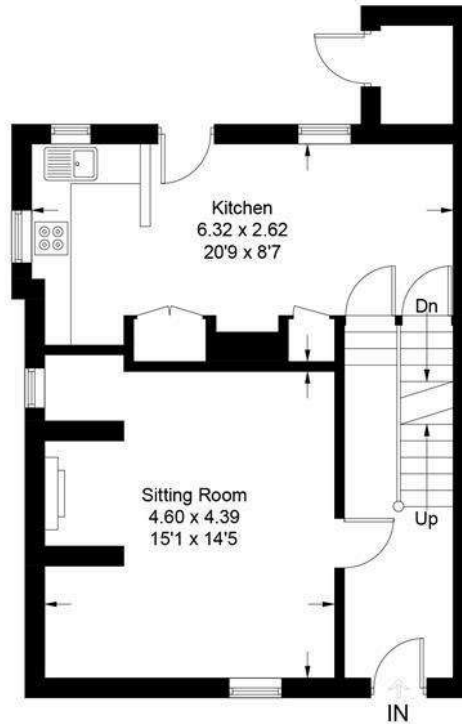
 = Reduced headroom below 1.5m / 5'0



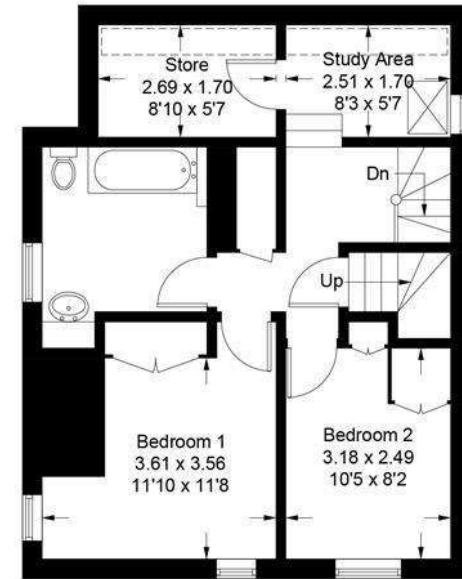
Second Floor



Lower Ground Floor



Ground Floor



First Floor

This plan is for layout guidance only. Not drawn to scale unless stated. Windows and door openings are approximate. Whilst every care is taken in the preparation of this plan, please check all dimensions, shapes and compass bearings before making decisions reliant upon them. (ID806069)

www.bagshawandhardy.com © 2021

h.

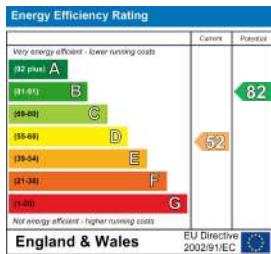
HOUSE INFORMATION

Total gross internal area: House 1,398 sq ft / 129.8 sq m.

Services: All mains services. Gas-fired central heating.

Local authority: Chichester District Council.
Tel: 01243 785166.

Viewing: Strictly by appointment. Tel: 01483 266721.



t. 0800 917 0447

w. housepartnership.co.uk

f in p @