

**house.**

PARTNERSHIP

Moving estate agency on





h.

3

Moor Park Gardens  
Coombe Lane West  
Kingston upon Thames KT2 7UD

---

Quietly nestling within a rare double gated location of Coombe, this exceptional family home provides a wonderful flow and style that truly enhances the beautiful secluded gardens

- Reception hall
- Drawing room, dining room, and study
- Kitchen / breakfast room and family room
- Utility room and cloakroom
- Master bedroom with en suite dressing room and bathroom
- 6 further bedrooms (5 with en suite shower rooms)
- Further bedroom / studio with en suite shower room
- Block paved forecourt
- Garden with outdoor kitchen and barbecue area
- EPC: C



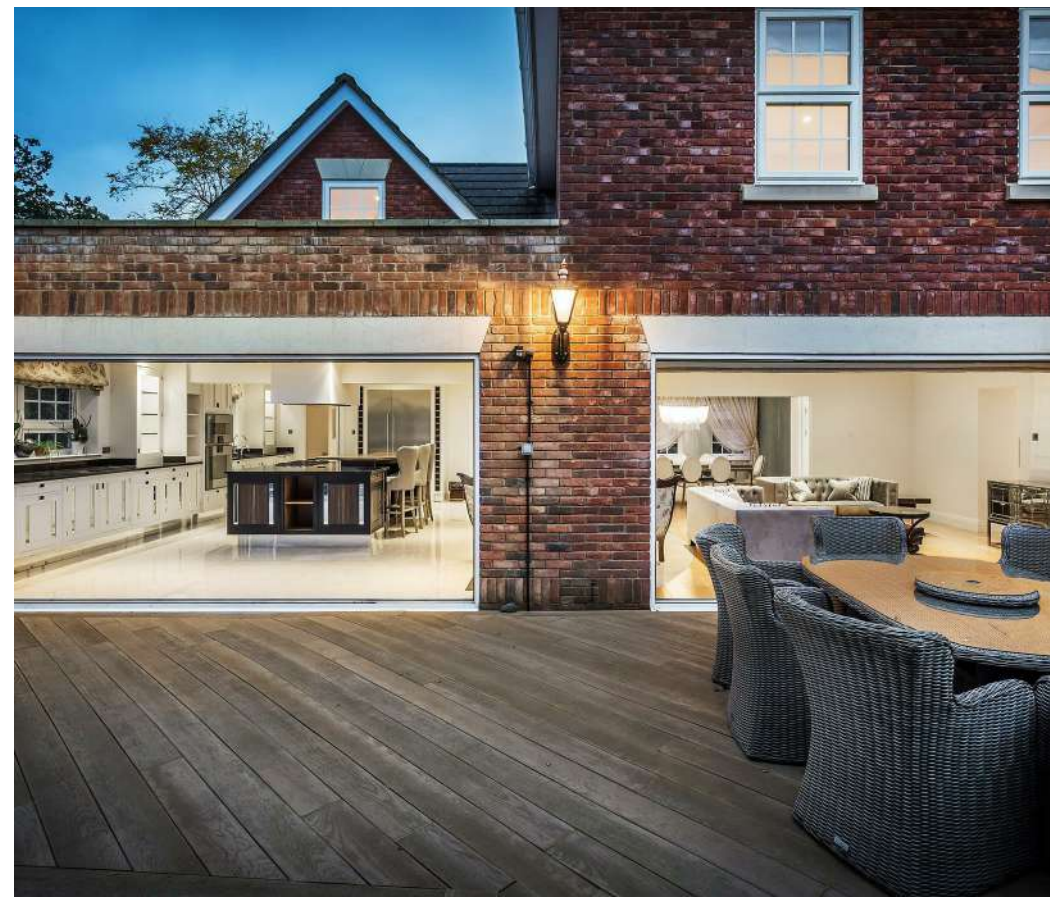


h.





h.





h.





h.



properties perfectly presented



h.





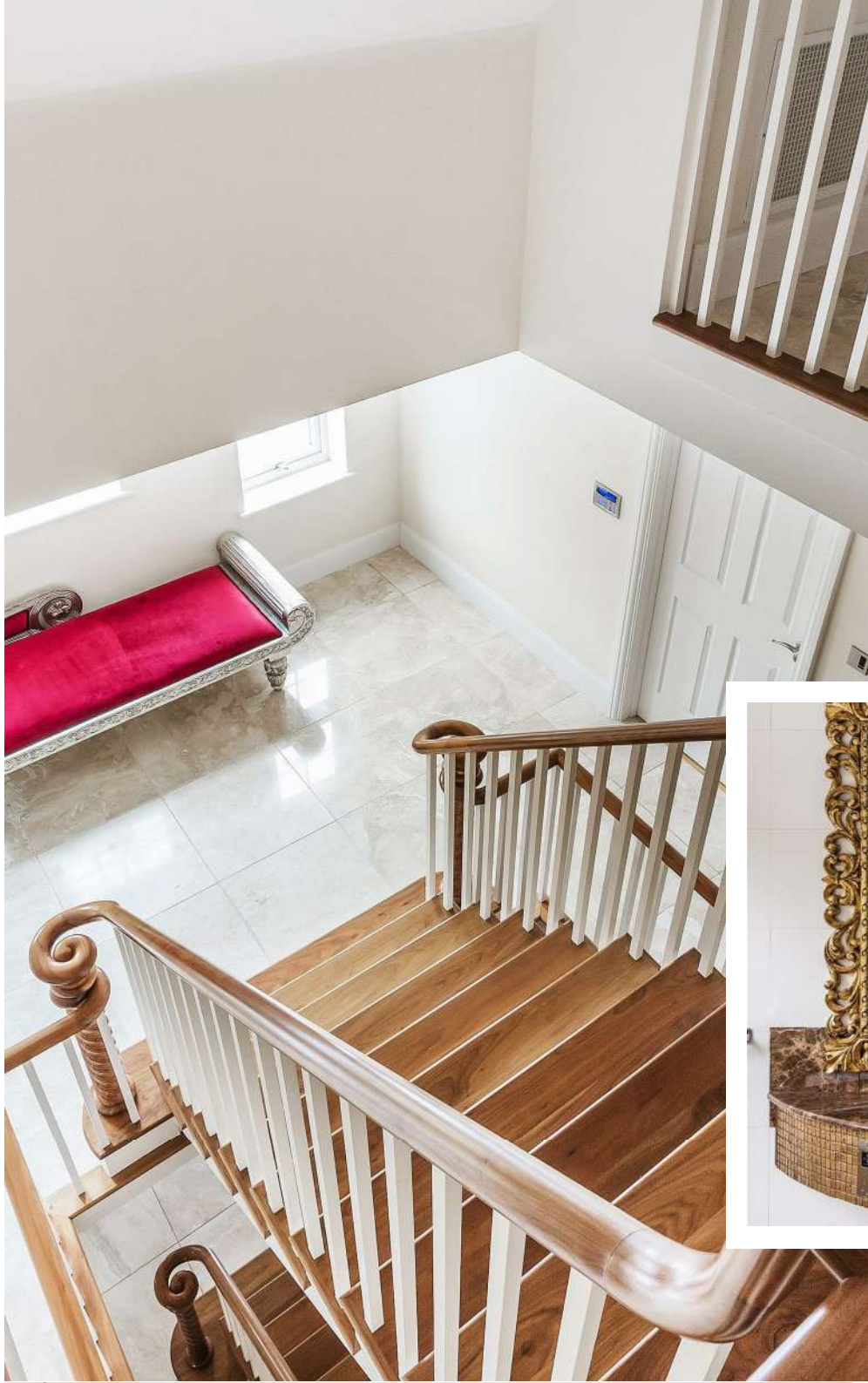
h.

properties perfectly presented





h.





h.



properties perfectly presented

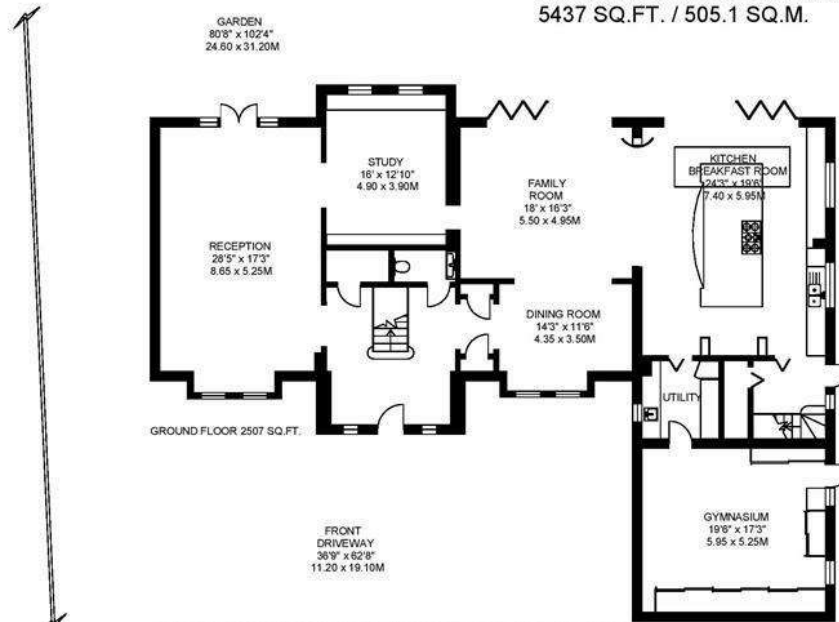




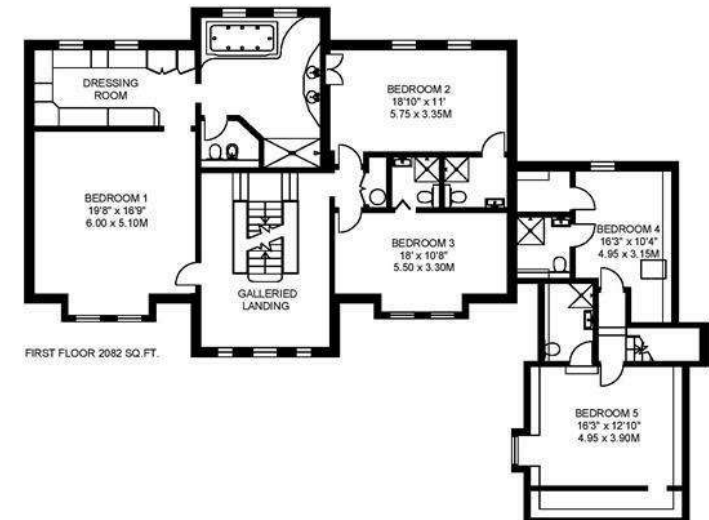
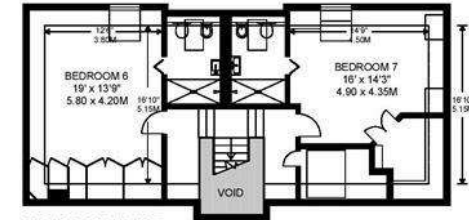
# h.

## MOORE PARK GARDENS COOMBE

APPROXIMATE INTERNAL FLOOR (LIVING) AREA  
5437 SQ.FT. / 505.1 SQ.M.



FLOORPLAN PRODUCED FOR "HOUSE PARTNERSHIP" BY FLOORPLANNERS 07801 228850.  
ALL MEASUREMENTS ARE MAXIMUM, AND INCLUDE WINDOW BAYS AND WARDROBES WHERE APPLICABLE.  
WHERE A ROOM HAS A SLOPING CEILING, THE DOTTED LINE MARKS 1.50M HEIGHT, AND THE MEASUREMENTS ARE SHOWN AT FLOOR LEVEL.





# h.

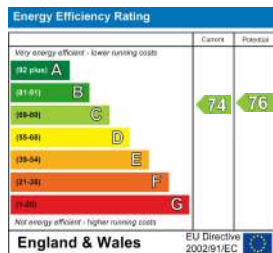
## HOUSE INFORMATION

Approximate total gross internal area: House  
5,437 sq ft / 505.10 sq m.

Services: All mains services. Gas-fired central  
heating.

Local authority: Kingston Council. Tel: 020  
8547 5000.

Viewing: Strictly by appointment. Tel: 020  
8947 9111.



t. 0800 917 0447

w. [housepartnership.co.uk](http://housepartnership.co.uk)

f in p o