

**house.**

PARTNERSHIP

Moving estate agency on



# h.

## APARTMENT EIGHT

Albury Park Mansion  
Albury  
Guildford GU5 9BB

---

Enjoying a stunning parkland setting in the Surrey Hills Area of Outstanding Natural Beauty, an exceptional apartment with private roof terrace and situated in the magnificent Albury Park Mansion

- Communal reception hall
- Entrance hall
- Drawing room and dining room
- Kitchen / breakfast room
- Master bedroom with en suite bathroom
- Guest bedroom with en suite bathroom
- Bedroom 3 / study and shower room
- Private roof terrace
- Single garage and allocated parking
- Communal grounds



h.

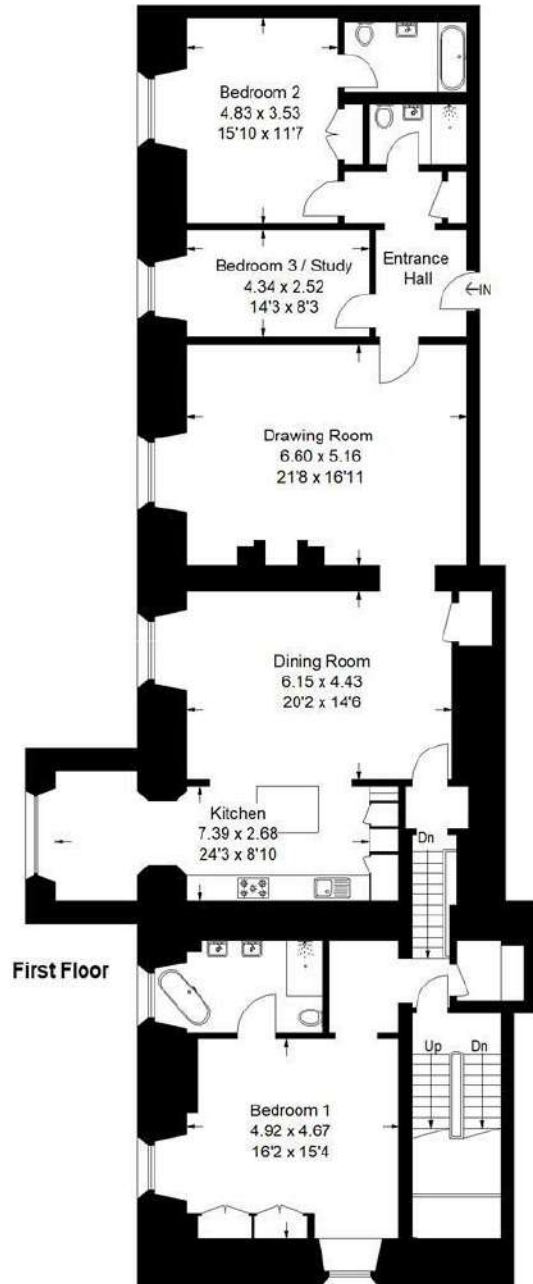


h.

properties perfectly presented



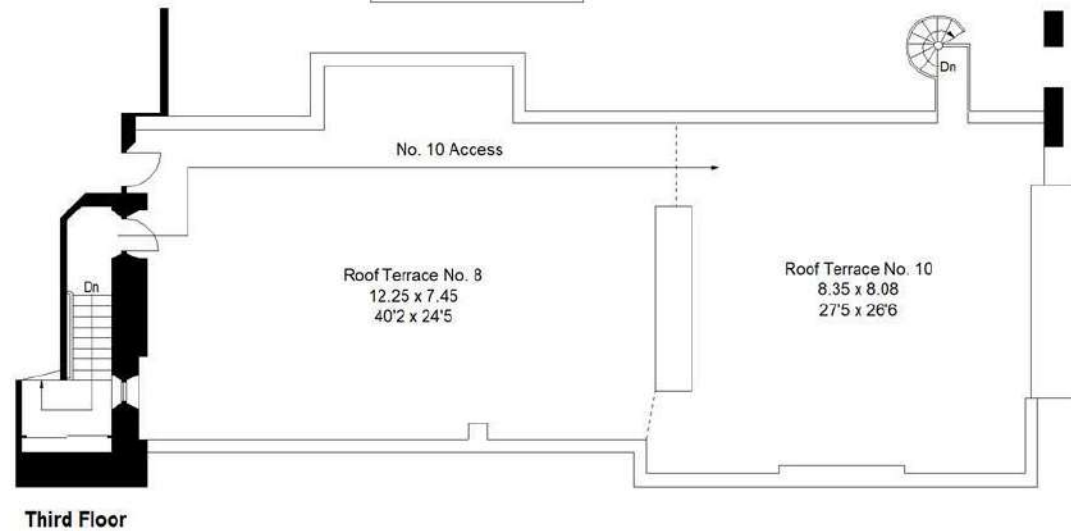
h.



## Albury Park Mansion, Albury Park

Approximate Gross Internal Area  
190 sq m / 2044 sq ft

This plan is for representation purposes only. Reproduced from plans supplied by the selling Agent. Not drawn to scale unless stated. Please check all dimensions before making any decisions reliant upon them. No guarantee is given on square footage if quoted. Any figures if quoted should not be used as a basis for valuation.



# h.

## HOUSE INFORMATION

Approximate total gross internal area:  
Apartment 2,044 sq ft / 190 sq m.

Services: All mains services. Gas-fired central  
heating.

Local authority: Guildford Borough Council.  
Tel: 01483 505050.

Viewing: Strictly by appointment. Tel: 01483  
266720.

