

**house.**

PARTNERSHIP

Moving estate agency on





# h.

## TIMBERDOWN

Harborough Drive  
West Chiltington  
Pulborough RH20 2PN

---

Well presented family home, enjoying uninterrupted delightful rural views, in a tucked away position in this favoured West Sussex village

- Entrance hall
- Sitting room, family room and study
- Kitchen / dining room and sun room
- Utility room and cloakroom
- Master bedroom with en suite dressing room, bathroom and balcony
- Guest bedroom with en suite shower room
- 3 further bedrooms, family bathroom and galleried landing
- Double garage with gardener's wc and store above
- Gardens and grounds
- in about 0.5 acre; EPC: C





h.





h.





h.





h.



properties perfectly presented



h.





h.

properties perfectly presented





h.





h.



properties perfectly presented




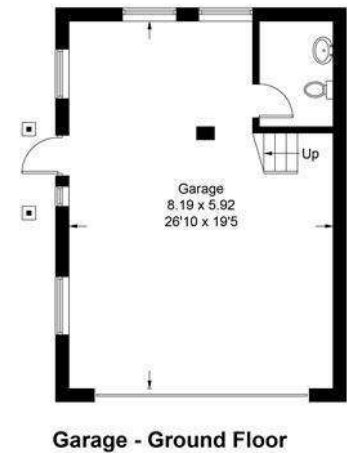
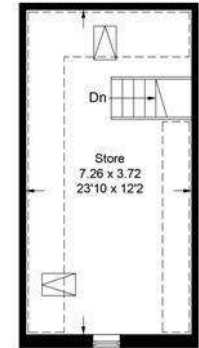
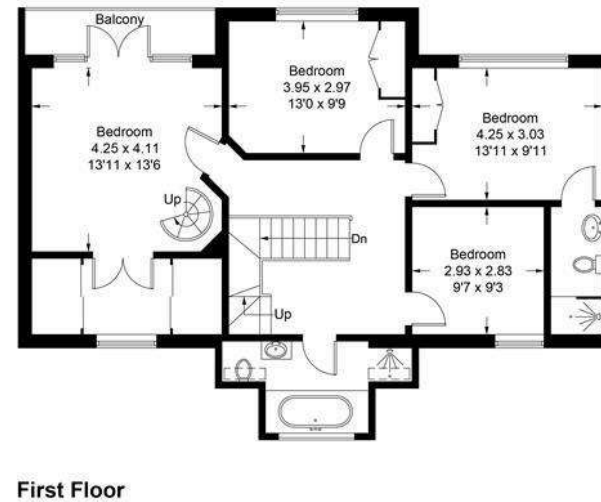
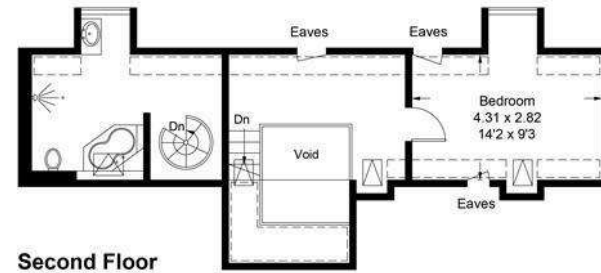


# h.

Approximate Gross Internal Area = 230.6 sq m / 2482 sq ft  
(Excluding Void)  
Garage = 75.3 sq m / 810 sq ft  
Total = 305.9 sq m / 3292 sq ft



 = Reduced headroom below 1.5m / 5'0



This plan is for layout guidance only. Not drawn to scale unless stated. Windows and door openings are approximate. Whilst every care is taken in the preparation of this plan, please check all dimensions, shapes and compass bearings before making decisions reliant upon them. (ID792827)

[www.bagshawandhardy.com](http://www.bagshawandhardy.com) © 2021



# h.

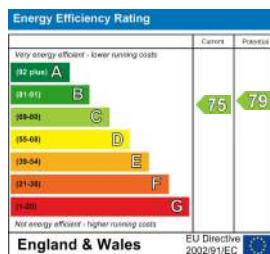
## HOUSE INFORMATION

Approximate total gross internal area: House 2,482 sq ft / 230.6 sq m (excluding Void); Garage 810 sq ft / 75.3 sq m. Total 3,292 sq ft / 305.9 sq m.

Services: All mains services. Gas-fired central heating. Underfloor heating to the ground floor. Triple glazing.

Local authority: Horsham District Council. Tel: 01403 215100.

Viewing: Strictly by appointment. Tel: 01483 266707.



t. 0800 917 0447

w. [housepartnership.co.uk](http://housepartnership.co.uk)

f in p o