



Chantrey House, Belgravia
London SW1W

GARTONJONES.COM



Chantrey House, Belgravia London, SW1W

£950 Per Week

A beautifully presented 1 DOUBLE BEDROOM apartment to RENT of approx. 641sq.ft (59.5 sq.m) in this small secure building in Belgravia. This spacious apartment is finished to a high standard and benefits from a double bedroom with a flat screen wall mounted Samsung TV, fitted wardrobes and a luxury en-suite bathroom. There is an OPEN PLAN reception room with a wall mounted flat screen TV, a smart kitchen with integrated appliances including a wine cooler and induction hob, comfort cooling, a video entry phone system, a guest cloakroom and a Crestron iPad controlled home system. 24 HOUR CONCIERGE.

Available via our on-site office at Grosvenor Waterside (underneath Bramah House, approx. a 5 minute walk from the property). Belgravia and Elizabeth Street, Knightsbridge, and Sloane Square are within easy access and Victoria Mainline station with Gatwick Express are just a few minutes' walk.

Hot water is included in rental price.

Council Tax: Westminster City Council (band F).

12 month minimum term. 5 week deposit required.

EPC Rating: C (75)

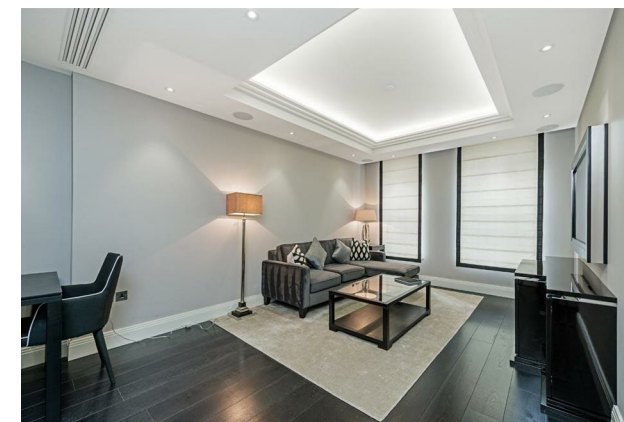
Please note this development does not accept pets.

- 641 Sq.ft (59.5 Sq.m)
- 1 Double Bedroom Apartment
- Open Plan Reception Room
- Kitchen with Miele Integrated Appliances
- Luxury En-Suite Bathroom
- Furnished
- Wood Flooring & Comfort Cooling
- 24 Hour Concierge
- A 2 Minute Walk To Victoria Station
- Easy Access To Belgravia, Elizabeth Street & Knightsbridge

GARTON JONES.COM

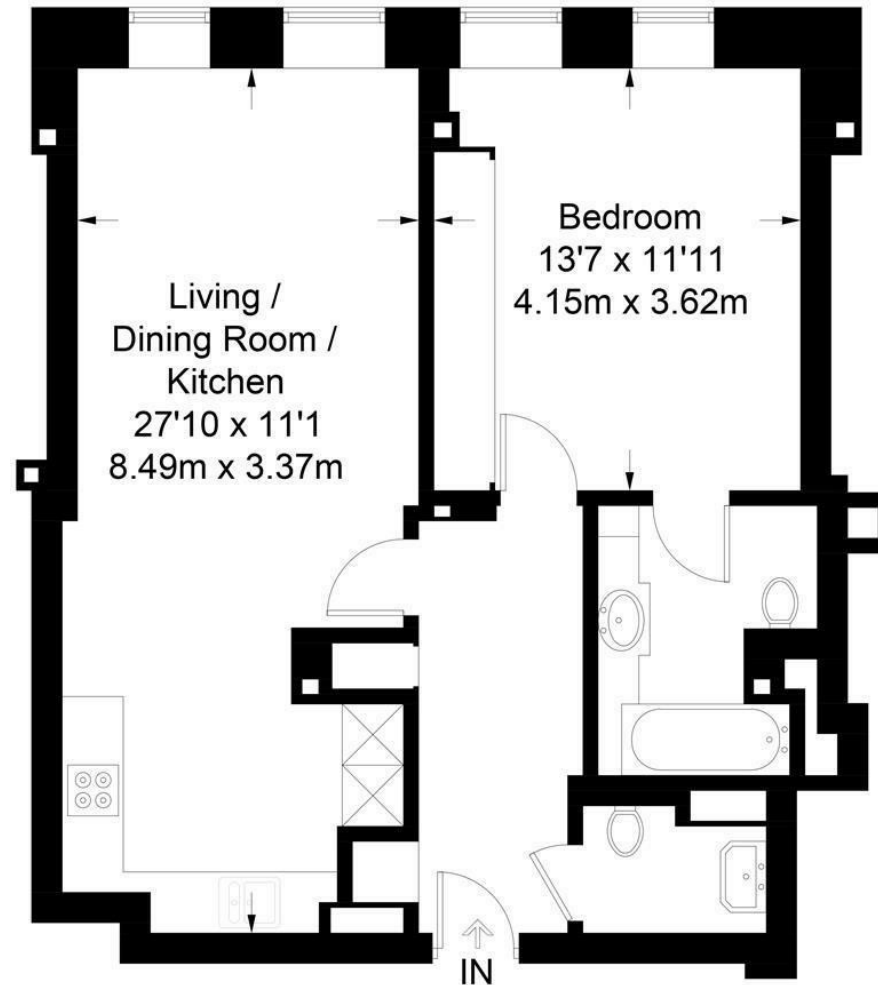
8 Gatliff Road
Grosvenor
Waterside
Chelsea
London
SW1W 8DP

Lettings:
+44 (0) 20 7730 5007
gws@gartonjones.com
www.gartonjones.com



Chantrey House

Approximate Gross Internal Area = 641 sq ft / 59.5 sq m



Not to scale, for guidance only and must not be relied upon as a statement of fact.
All measurements and areas are approximate only and have been prepared in accordance with the current edition of the RICS Code of Measuring Practice.

