



Chelsea Cloisters, Chelsea
London SW3

GARTON JONES.COM



Chelsea Cloisters, Chelsea London, SW3

£525,000 Leasehold

A bright one double bedroom apartment of approx. 407 sq.ft (38 sq.m) in Chelsea Cloisters, a popular development located on Sloane Avenue in Chelsea. This well maintained apartment has built in double wardrobes, wood flooring, separate kitchen, modern bathroom plus a second separate WC. This is a great location with many local amenities including the popular bars and restaurants of Sloane Street Kings Road and Brompton Road. The block is also within walking distance of both Sloane Square and South Kensington Tube Station. Available via Garton Jones' Chelsea & Belgravia office.

This apartment has had a lease extension

Leasehold: Expires 23.06.2200

Service Charges: £4,947.68 per annum

Ground Rent: £132.00 per annum

EWS1 — N/A

EPC Rating: C

Royal Borough of Kensington and Chelsea
(band E)

EPC Rating: 69 (C)

- 407 Sq.ft (38 Sq.m)
- 1 Double Bedroom
- Reception Room
- Separate Kitchen
- Bathroom Plus Separate WC
- 24 Hour Concierge
- Wood Flooring
- Close to Local Amenities Including Shops, Restaurants & Transport Links on both Brompton Road & Kings Road
- Within Walking Distance Of Sloane Square & South Kensington Tube Stations

GARTON JONES.COM

8 Gatliff Road
Grosvenor
Waterside
Chelsea
London
SW1W 8DP

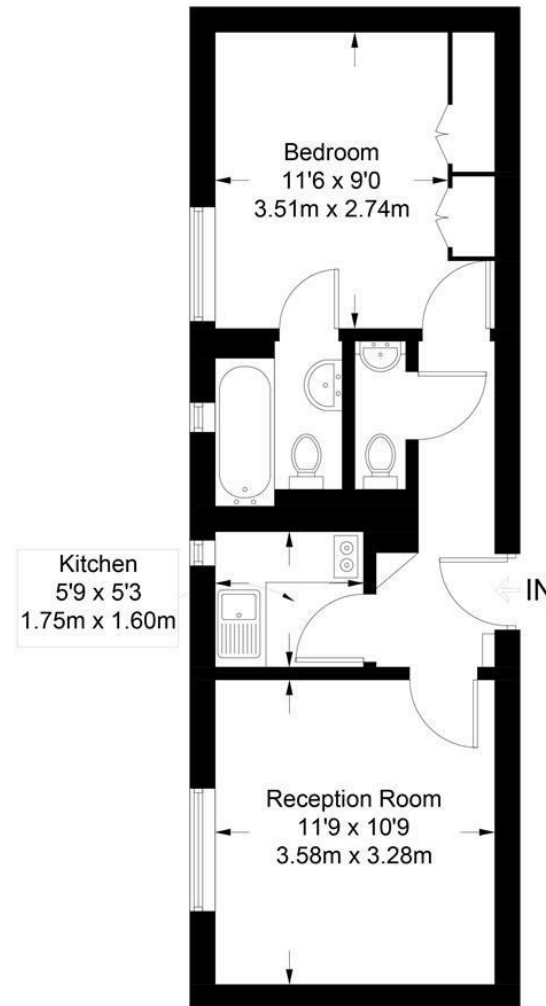
Sales +44 (0) 20 7730 5007
gws@gartonjones.com
www.gartonjones.com



EPC certificate available on request.

Chelsea Cloisters

Approximate Gross Internal Area = 407 sq ft / 37.8 sq m



Not to scale, for guidance only and must not be relied upon as a statement of fact.
All measurements and areas are approximate only and have been prepared in accordance with the current edition of the RICS Code of Measuring Practice.

