



Chelsea Cloisters, Chelsea  
London SW3

GARTON JONES.COM





# Chelsea Cloisters, Chelsea London, SW3

## £525,000 Leasehold

A bright one double bedroom apartment of approx. 407 sq.ft (38 sq.m) in Chelsea Cloisters, a popular development located on Sloane Avenue in Chelsea. This well maintained apartment has built in double wardrobes, wood flooring, separate kitchen, modern bathroom plus a second separate WC. This is a great location with many local amenities including the popular bars and restaurants of Sloane Street Kings Road and Brompton Road. The block is also within walking distance of both Sloane Square and South Kensington Tube Station.

Available via Garton Jones' Chelsea & Belgravia office.

Service Charges: £4,947.68 per annum  
Ground Rent: £132.00 per annum  
Leasehold: Expires 24/06/2110  
EWS1 — not required  
EPC Rating: C

Royal Borough of Kensington and Chelsea  
(band E)

EPC Rating: 69 (C)

EPC certificate available on request.

- 407 Sq.ft (38 Sq.m)
- 1 Double Bedroom
- Reception Room
- Separate Kitchen
- Bathroom Plus Separate WC
- 24 Hour Concierge
- Wood Flooring
- Close to Local Amenities Including Shops, Restaurants & Transport Links on both Brompton Road & Kings Road
- Within Walking Distance Of Sloane Square & South Kensington Tube Stations

## GARTON JONES.COM

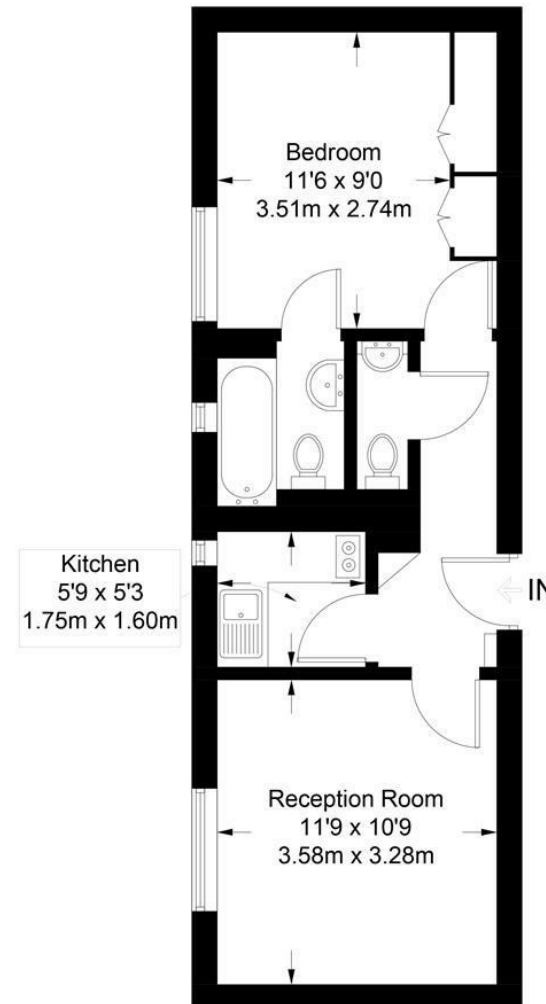
8 Gatliff Road  
Grosvenor  
Waterside  
Chelsea  
London  
SW1W 8DP

Sales +44 (0) 20 7730 5007  
gws@gartonjones.com  
www.gartonjones.com



## Chelsea Cloisters

Approximate Gross Internal Area = 407 sq ft / 37.8 sq m



Not to scale, for guidance only and must not be relied upon as a statement of fact.  
All measurements and areas are approximate only and have been prepared in accordance with the current edition of the RICS Code of Measuring Practice.

