



Hepworth Court, 30 Gatliff Road
London SW1W

GARTONJONES.COM



Hepworth Court, 30 Gatliff Road London, SW1W

£665,000 Leasehold

A ONE DOUBLE bedroom apartment with UNDERGROUND PARKING for sale on Grosvenor Waterside development, set close to the River Thames. This bright apartment is approx. 547sq.ft (50.83 sq.m) in Hepworth Court. There is an open plan reception room with access to a PRIVATE BALCONY, an integrated kitchen, modern bathroom and wood flooring and comfort cooling. 24 HOUR CONCIERGE, GYM & SPA. On-site Sainsbury's Local, coffee shop and private kids club. SLOANE SQUARE & VICTORIA station with Gatwick Express are within walking distance.

Available via Garton Jones on-site office at Grosvenor Waterside (underneath Bramah House).

Service Charges: approx. £5024 per annum (2026)
Ground Rent: approx. £1,013.00 per annum (2026)

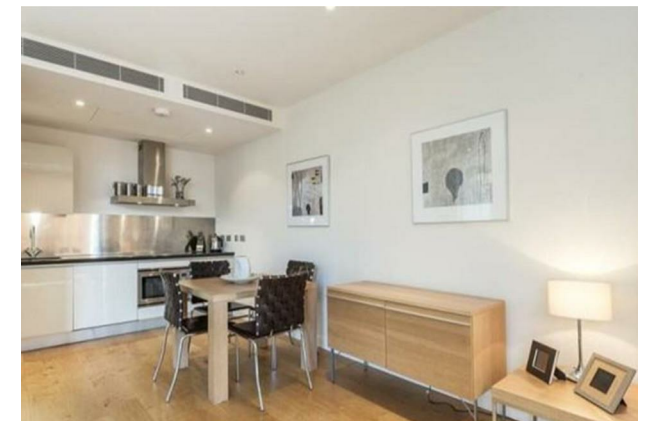
Leasehold: 999 years from 1 January 2003
Council Tax: Westminster City Council (band E)
EWS1 Compliant
EPC Rating: B (82)

- 547 Sq.ft (50.83 Sq.m)
- 1 Double Bedroom
- Secure Underground Parking
- Open Plan Living Room
- Integrated Kitchen
- Modern Bathroom
- 24 Hour Concierge
- Private Balcony
- On-Site Sainsbury's, Coffee Shop & Bakery, Purple Dragon Private Kids Club & Crèche
- Walking Distance To Sloane Square & Victoria Station

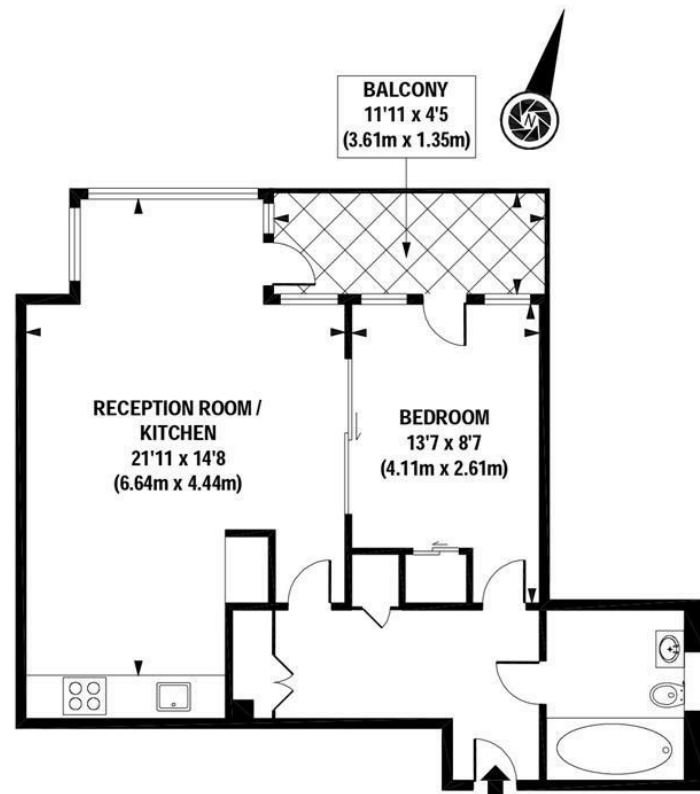
GARTON JONES.COM

8 Gatliff Road
Grosvenor
Waterside
Chelsea
London
SW1W 8DP

Sales +44 (0) 20 7730 5007
gws@gartonjones.com
www.gartonjones.com



EPC certificate available on request.



APPROX. GROSS INTERNAL FLOOR AREA 547 sq. ft / 50.83 sq. m

Floorplan is for illustrative purposes only and is not to scale.
Every attempt has been made to ensure the accuracy of the floorplan shown, however all measurements, fixtures, fittings and data shown are an approximate interpretation for illustrative purposes only.
Liability for errors, omissions or mis-statement through negligence or otherwise is hereby excluded.

