



Moore House, 2 Gatliff Road
London SW1W

GARTONJONES.COM

Moore House, 2 Gatliff Road London, SW1W

£1,149 Per Week

GARTON JONES.COM

8 Gatliff Road
Grosvenor
Waterside
Chelsea
London
SW1W 8DP

Lettings:
+44 (0) 20 7730 5007
gws@gartonjones.com
www.gartonjones.com

A 2 DOUBLE BEDROOM apartment to rent of approx. 945 sq.ft (87.8sq.m) in Moore House, Grosvenor Waterside, located close to the banks of the River Thames by Chelsea Bridge. This apartment is available FURNISHED OR UNFURNISHED and benefits from an open plan reception room, kitchen with integrated appliances including a wine cooler, wood flooring, comfort cooling, en-suite bathroom plus separate shower room, excellent storage including a utility cupboard housing a washer dryer and built in wardrobes to the master bedroom. There is UNDERGROUND PARKING. 24 HOUR CONCIERGE, GYM & SPA. On-site Sainsbury's Local, coffee shop and private kids club. SLOANE SQUARE & VICTORIA station with Gatwick Express are within walking distance. Battersea Park is also just a short stroll away across Chelsea Bridge.

Available via Garton Jones on-site office at Grosvenor Waterside (underneath Bramah House).

Please note furniture may differ to that shown in the current photos.

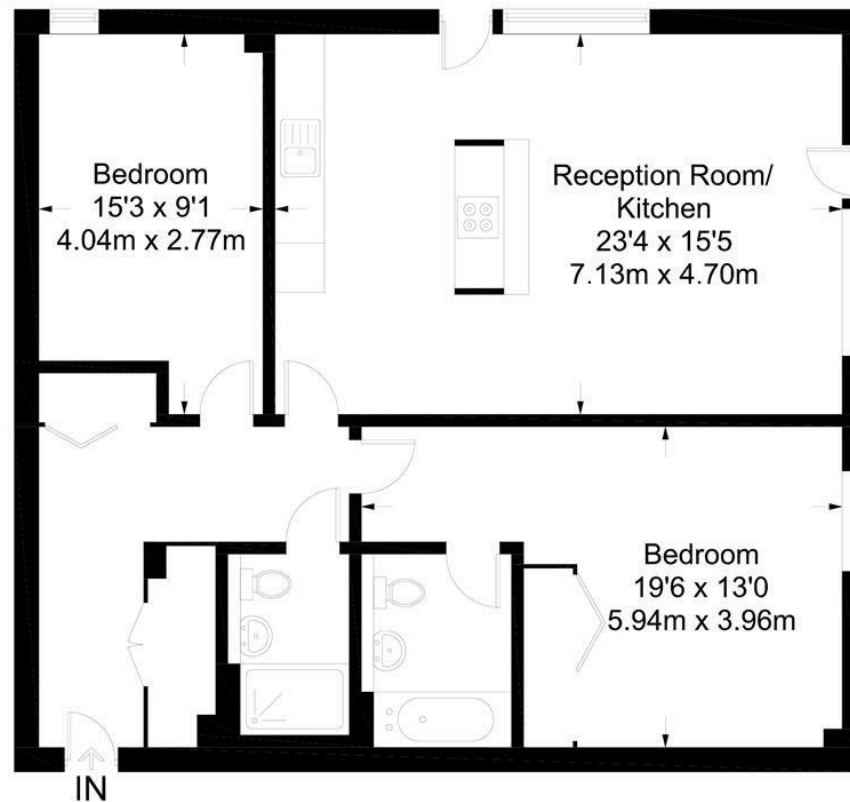
Council Tax: Westminster City Council
6 Weeks Deposit
EPC Rating: B (83)

- 945 Sq.ft (87.8 Sq.m)
- 2 Double Bedrooms
- 2 Bathrooms (1 En-Suite)
- Dual Aspect Open Plan Reception Room
- Kitchen with Miele Integrated Appliances
- 24 Hour Concierge
- Secure Underground Parking Space
- On-Site Residents' Gym With Spa Facilities
- On-Site Sainsbury's, Coffee Shop & Bakery, Purple Dragon Private Kids Club & Crèche
- Walking Distance to Sloane Square & Victoria Station



Moore House

Approximate Gross Internal Area = 945 sq ft / 87.8 sq m



Not to scale, for guidance only and must not be relied upon as a statement of fact.
All measurements and areas are approximate only and have been prepared in
accordance with the current edition of the RICS Code of Measuring Practice.

