



Gatliff Close, Chelsea  
London SW1W

GARTONJONES.COM



# Gatliff Close, Chelsea London, SW1W

## £440 Per Week

GARTON JONES.COM

8 Gatliff Road  
Grosvenor  
Waterside  
Chelsea  
London  
SW1W 8DP

Lettings:  
+44 (0) 20 7730 5007  
gws@gartonjones.com  
www.gartonjones.com

A bright and neutrally decorated studio apartment to rent of approx. 301 sq.ft (28sq.m) in a secure and desirable location close the banks of the River Thames. The living space comprises of an open plan area with direct access to the courtyard, a modern kitchen, shower room and good storage. The apartment is situated opposite Chelsea Barracks and Chelsea Bridge and is within walking distance to the many shops, boutiques and shopping facilities on Kings Road. Our office is on-site at Grosvenor Waterside (underneath Bramah House) and there is also an on-site Sainsbury's Local, a coffee shop, crèche and Purple Dragon private kids' club. The additional amenities and the excellent transport links of both Sloane Square and Victoria with link to the Gatwick Express are within walking distance.

Available via Garton Jones Chelsea & Belgravia (approx. 2 minute walk away from the property).

\*Please note the furniture may differ or not be included to that shown in the current photos.

Council Tax: Westminster City Council (band A)

EPC Rating: C (72)

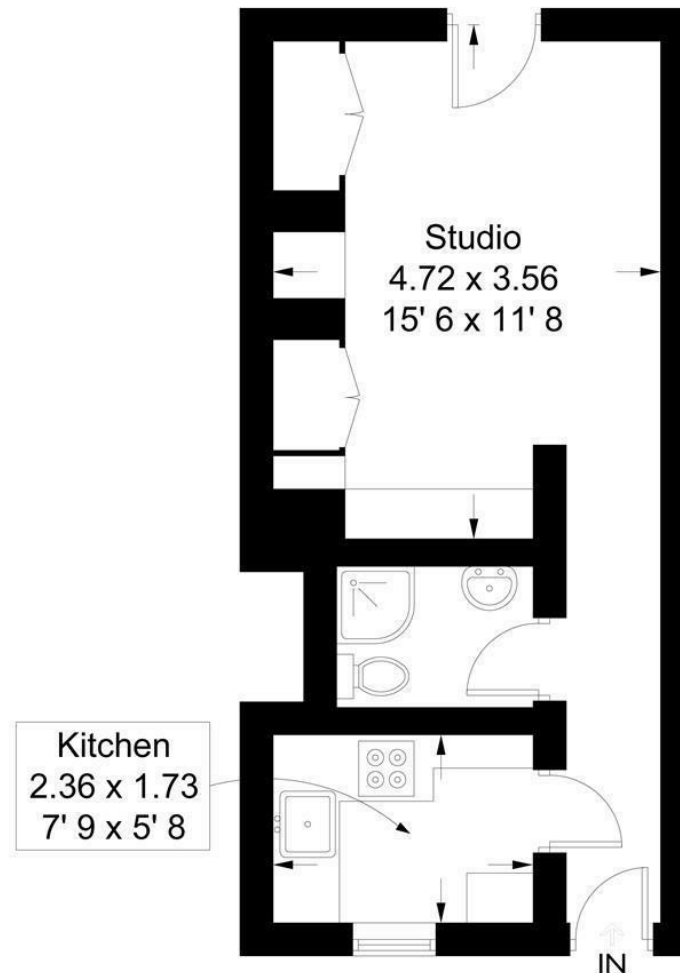
To check broadband and mobile phone coverage, please visit Ofcom: [ofcom.org.uk/phones-telecoms-and-internet/advice-for-consumers/advice/ofcom-checker](http://ofcom.org.uk/phones-telecoms-and-internet/advice-for-consumers/advice/ofcom-checker)

- 301 Sq.ft (28 Sq.m)
- Studio Apartment
- Shower Room
- Open Plan Living
- Modern Kitchen
- Furnished
- Wooden Flooring
- Direct Access To Courtyard
- On-Site Sainsbury's, Coffee Shop & Bakery, Purple Dragon Private Kids Club & Crèche
- Walking Distance To Sloane Square & Victoria Station



**Gatliff Close**

Approximate Gross Internal Area = 301 sq ft / 28 sq m



Not to scale, for guidance only and must not be relied upon as a statement of fact  
All measurements and areas are approximate only and have been prepared in  
accordance with the current edition of the RICS Code of Measuring Practice

