



Bramah House, 9 Gatliff Road
London SW1W

GARTON JONES.COM



Bramah House, 9 Gatliff Road London, SW1W

£750 Per Week

A tastefully furnished ONE DOUBLE BEDROOM apartment to RENT of approx. 532 sq.ft (49.42 sq.m) in Bramah House, part of the popular Grosvenor Waterside development in Chelsea. This beautifully presented apartment has an open plan reception room with access to a LARGE PRIVATE BALCONY with direct views of the historic Grosvenor Dock. There is a smart kitchen with integrated Miele and Siemens appliances, a luxury bathroom suite, newly replaced flooring, comfort cooling and good storage including a utility cupboard housing a washer dryer, a large coat cupboard and balcony storage plus fitted wardrobes to the bedroom. 24 HOUR CONCIERGE, GYM and SPA. On-site Sainsbury's Local, coffee shop and private kids club. SLOANE SQUARE and VICTORIA station with Gatwick Express are within walking distance. Battersea Park is also just a short stroll away across Chelsea Bridge.

Available via Garton Jones' on-site office at Grosvenor Waterside (underneath Bramah House).

Please note the furniture may differ or not be included to that shown in current photos.

Council Tax: Westminster City Council (band E).

12 month minimum term. 5 week deposit required.

EPC Rating: B (81)

To check broadband and mobile phone coverage, please visit Ofcom: ofcom.org.uk/phones-telecoms-and-internet/advice-for-consumers/advice/ofcom-checker

EPC certificate available on request.

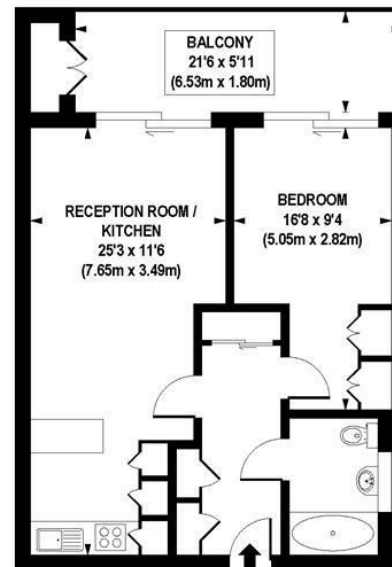
GARTON JONES.COM

8 Gatliff Road
Grosvenor
Waterside
Chelsea
London
SW1W 8DP

Sales +44 (0) 20 7730 5007
gws@gartonjones.com
www.gartonjones.com

- 532 Sq.ft (49.42 Sq.m)
- One Double Bedroom
- Beautifully Presented Apartment
- Open Plan Reception Room
- Smart Kitchen With Integrated Appliances
- Luxury Bathroom Suite
- 24 Hour Concierge
- Large Private Balcony With Direct Views Of The Historic Grosvenor Dock
- On-Site Sainsbury's, Crèche, Coffee Shop & Private Kids club
- Walking Distance To Sloane Square & Victoria





APPROX. GROSS INTERNAL FLOOR AREA 532 sq. ft / 49.42 sq. m

Floorplan is for illustrative purposes only and is not to scale.
Every attempt has been made to ensure the accuracy of the floorplan shown, however all measurements,
fixtures, fittings and data shown are an approximate interpretation for illustrative purposes only.
Liability for errors, omissions or mis-statement through negligence or otherwise is hereby excluded.

CP CREATIVE
PROPERTY MARKETING

