



Moore House, 2 Gatliff Road
London SW1W

GARTON JONES.COM



Moore House, 2 Gatliff Road London, SW1W

£725 Per Week

GARTON JONES.COM

8 Gatliff Road
Grosvenor
Waterside
Chelsea
London
SW1W 8DP

Sales +44 (0) 20 7730 5007
gws@gartonjones.com
www.gartonjones.com

A ONE DOUBLE BEDROOM apartment to RENT of approx. 575 sq.ft (53.4 sq.m) in Moore House, part of the popular Grosvenor Waterside development in Chelsea. This FURNISHED property benefits from an open plan reception room, a kitchen with integrated appliances, UNDERFLOOR HEATING, wood flooring, a luxury bathroom and good storage including fitted wardrobes to the bedroom and a utility cupboard housing a washing machine. 24 HOUR CONCIERGE, GYM & SPA. On-site Sainsbury's Local, coffee shop and private kids club. SLOANE SQUARE & VICTORIA station with Gatwick Express are within walking distance. Battersea Park is also just a short stroll away across Chelsea Bridge.

Available via Garton Jones' on-site office at Grosvenor Waterside (underneath Bramah House).

Please note the furniture may differ or not be included to that that shown in current photos.

Council Tax: Westminster Council (band E)

EPC Rating: B

12 month minimum term. 5 week deposit required.

To check broadband and mobile phone coverage, please visit Ofcom: ofcom.org.uk/phones-telecoms-and-internet/advice-for-consumers/advice/ofcom-checker

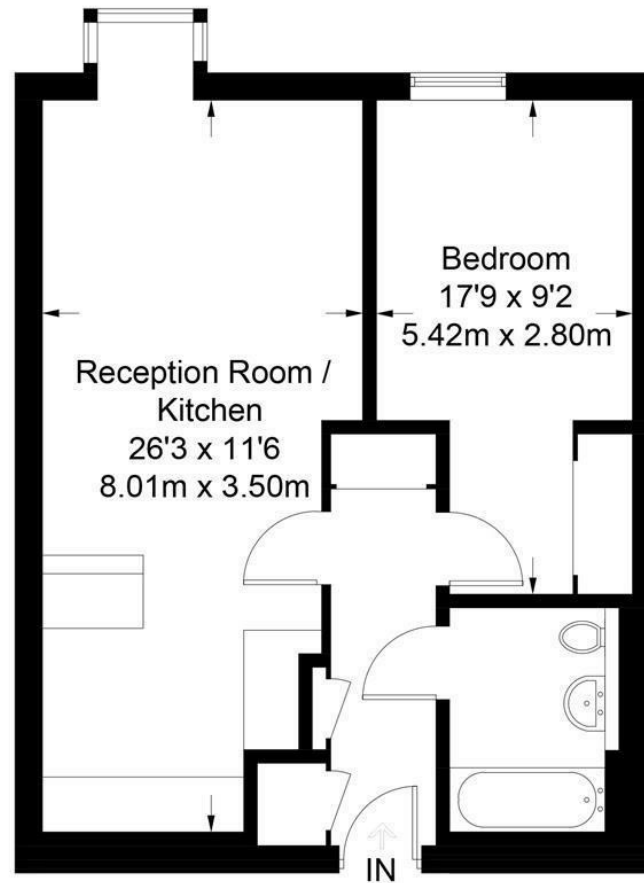
- 575 Sq.ft (53.4 Sq.m)
- 1 Double Bedroom
- Open Plan Reception Room
- Kitchen With Integrated Appliances
- Luxury Bathroom Suite
- 24 Hour Concierge
- Under Floor Heating
- Good Storage, Including Fitted Wardrobes To The Bedroom
- 24 Hour Concierge, Gym & Spa, On-Site Sainsbury's & Coffee Shop
- Walking Distance To Sloane Square & Victoria Train Station



EPC certificate available on request.

Moore House

Approximate Gross Internal Area = 575 sq ft / 53.4 sq m



Not to scale, for guidance only and must not be relied upon as a statement of fact.
All measurements and areas are approximate only and have been prepared in
accordance with the current edition of the RICS Code of Measuring Practice.

